

---

# Connectivity Testing: Market Information Management (MIM) Application Programming Interface (API) Using API Tool

January 19, 2024



# Table of Contents

<b>Preface</b>	<b>2</b>
<b>TC01 - Access MIM API Using API Tool</b>	<b>3</b>
<b>Additional Resources</b>	<b>8</b>

# Preface

This document outlines the test cases to be executed as part of the connectivity testing phase for the applications impacted by the Market Renewal Program (MRP). In this phase of testing, the primary objective is to assess and validate the connectivity components of the systems. Comprehensive functional testing phases will be scheduled for a future date and is not in scope of this test.

Please ensure any anomalies, disruptions, or irregularities discovered while performing the connectivity testing are documented in the qTest or Issue Log Template. This will contribute significantly to the overall improvement of the IESO tools.

## **Precondition:**

- 1. API Credentials (username and password) to access <https://webservices-sandboxmrp.ieso.ca/emim?wsdl>**

## **Notes:**

- 1. The API tool used to demonstrate the test cases in this document is [Tosca's API Scan](#). Users may choose to test with this tool or any other web service tool of their choice.**
- 2. Some of the images in this document reflect the current EMI, and will be updated when the MRP application becomes available during Connectivity Testing.**

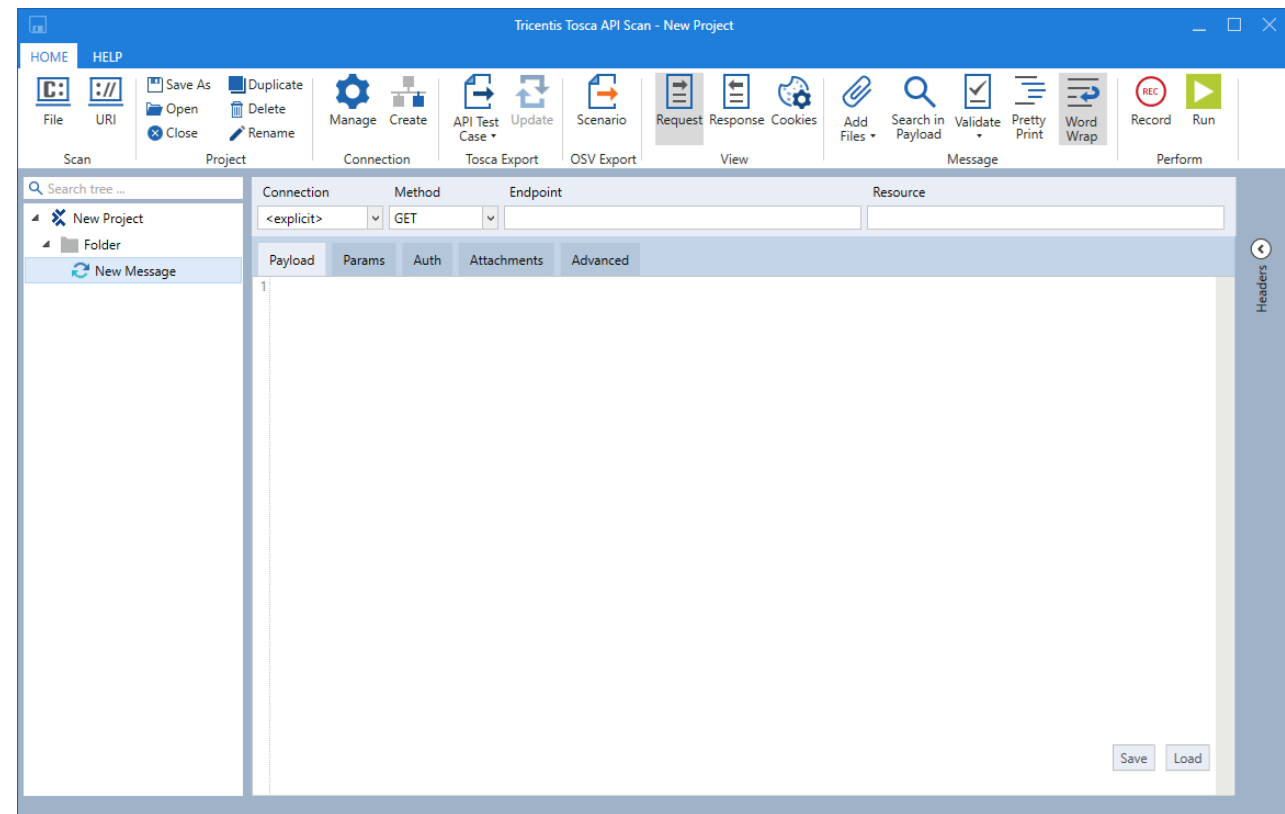
# TC01 - Access MIM API Using API Tool

## Step User Instruction

## Expected Result

- 1 Open the API tool of your choice. In this example, instructions for testing are provided using **Tosca's API Scan** tool.

The API tool (**API Scan**) is opened.



## Step User Instruction

## Expected Result

- 2 Set the following configurations within the API Tool to connect:

**Method:** POST

**Endpoint:**

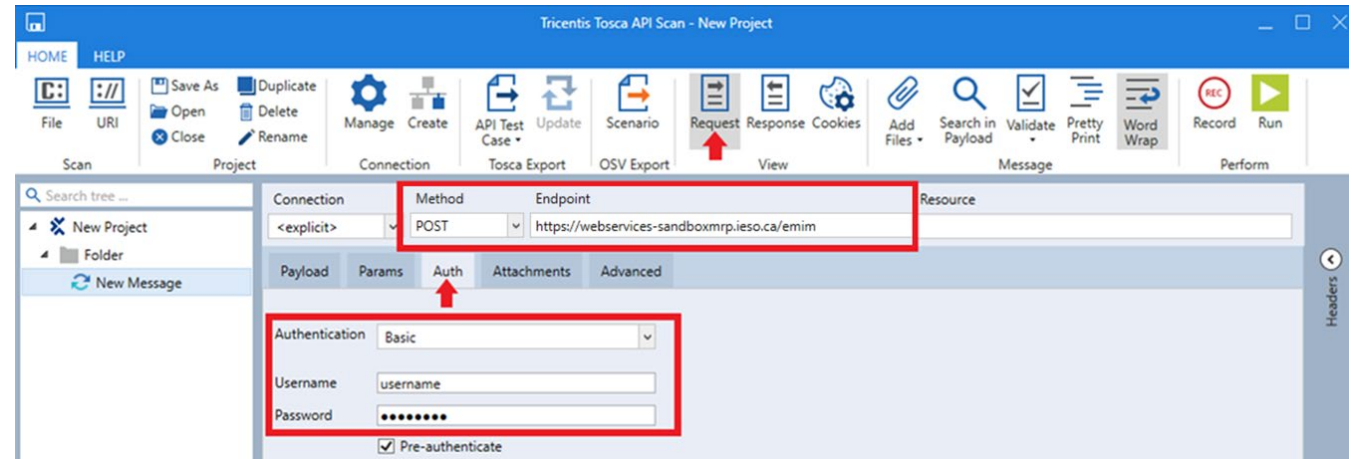
https://webservices-sandboxmrp.ieso.ca/emim

**Authentication:** Basic

**Username:** [API username]

**Password:** [API password]

Within **Tosca's API Scan** tool, the configurations would look as follows:



### Step User Instruction

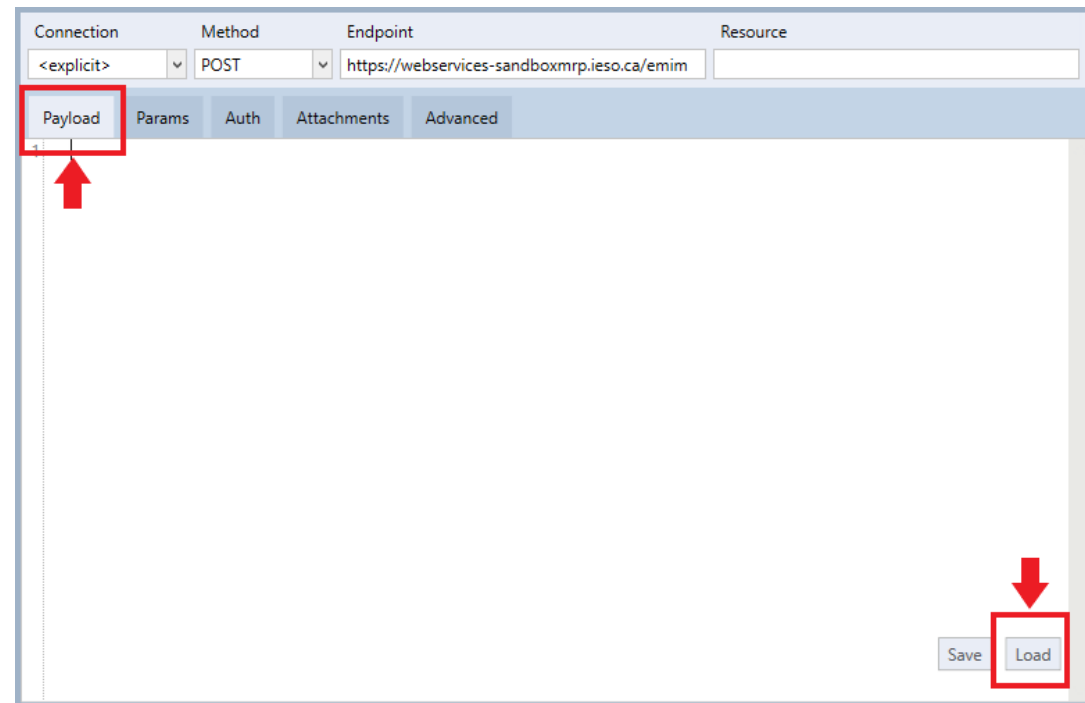
- Download and then load the **HealthCheckQuery.xml** file into the Payload section.

Payload file available for download at:

<https://www.ieso.ca/en/Market-Renewal/Market-Participant-Readiness/Market-Participant-Testing>

### Expected Result

Click **Payload** in Tosca's API Scan tool and select **Load** at the bottom right. Load the **HealthCheckQuery.xml** file downloaded.



Once loaded, the payload should look similar to this:

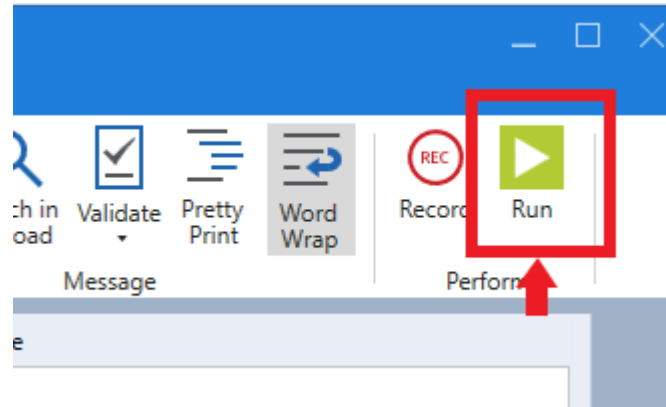
```
Payload Params Auth Attachments Advanced
1 <?xml version="1.0" encoding="UTF-8"?>
2 <HealthCheckQuery xmlns:xsi="http://www.w3.org/2001/XMLSchema-instance"
3   xsi:schemaLocation="http://webservices.ieso.ca/emim-types/ emim.xsd"
4   xmlns="http://webservices.ieso.ca/emim-types/" />
5 |
```

**Step User Instruction**

**Expected Result**

- 4 Run the health check request by clicking **Run** within the API tool.

The **Run** option is found in the top right corner of the tool.

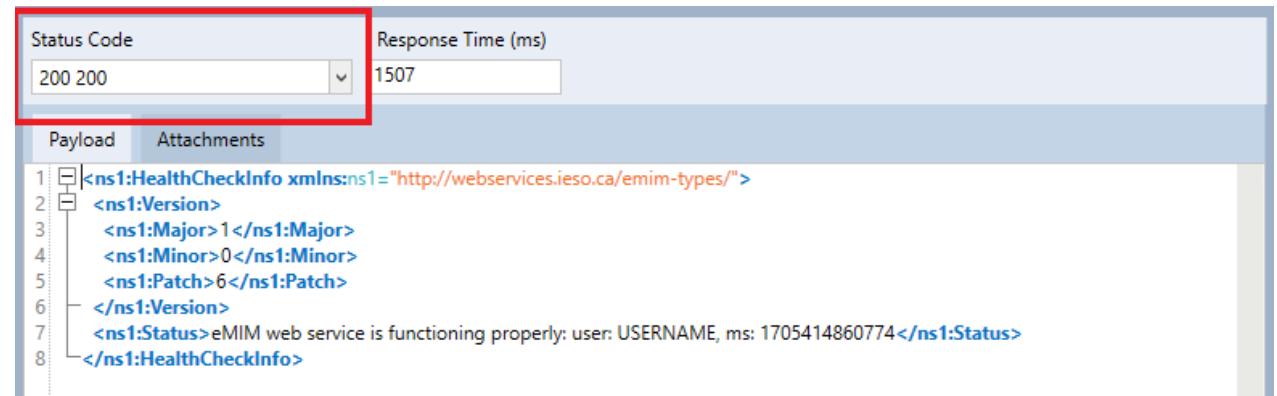


## Step User Instruction

## Expected Result

- 5 Confirm a successful response from the health check request sent was received to ensure a successful login.

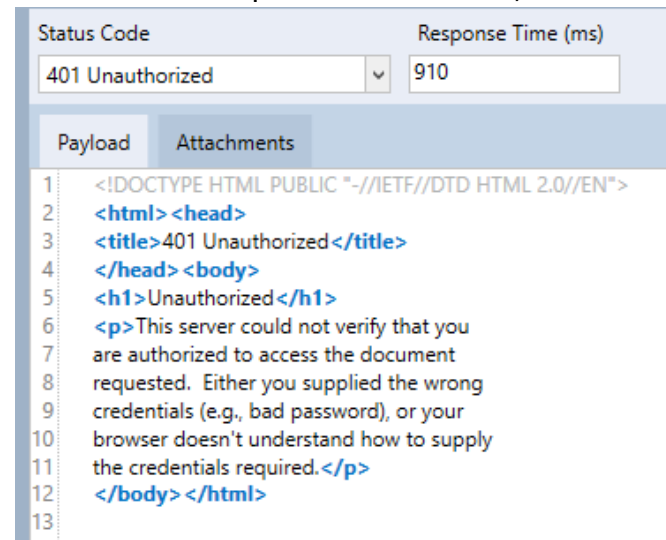
If health check request is successful, confirm **Status Code** of **200 200** is received. The response payload file should look similar to this:



The screenshot shows a software interface for viewing API responses. At the top, there are two input fields: 'Status Code' with a dropdown menu showing '200 200' and 'Response Time (ms)' with a text box containing '1507'. Below these fields are two tabs: 'Payload' and 'Attachments'. The 'Payload' tab is active, displaying an XML document with the following content:

```
1 <ns1:HealthCheckInfo xmlns:ns1="http://webservices.ieso.ca/emim-types/">
2   <ns1:Version>
3     <ns1:Major>1</ns1:Major>
4     <ns1:Minor>0</ns1:Minor>
5     <ns1:Patch>6</ns1:Patch>
6   </ns1:Version>
7   <ns1:Status>eMIM web service is functioning properly: user: USERNAME, ms: 1705414860774</ns1:Status>
8 </ns1:HealthCheckInfo>
```

If health check request is unsuccessful, **Status Code** will show **401 Unauthorized** error.



The screenshot shows a software interface for viewing API responses. At the top, there are two input fields: 'Status Code' with a dropdown menu showing '401 Unauthorized' and 'Response Time (ms)' with a text box containing '910'. Below these fields are two tabs: 'Payload' and 'Attachments'. The 'Payload' tab is active, displaying an HTML document with the following content:

```
1 <!DOCTYPE HTML PUBLIC "-//IETF//DTD HTML 2.0//EN">
2 <html><head>
3   <title>401 Unauthorized</title>
4 </head><body>
5   <h1>Unauthorized</h1>
6   <p>This server could not verify that you
7   are authorized to access the document
8   requested. Either you supplied the wrong
9   credentials (e.g., bad password), or your
10  browser doesn't understand how to supply
11  the credentials required.</p>
12 </body></html>
13
```





# Additional Resources

Reference materials on the MIM API System are available here:

- MIM API: [XSD](#)
- MIM API: [WSDL](#)
- [MIM Sample Request and Response Files](#)

---

**Independent Electricity  
System Operator**

1600-120 Adelaide Street West  
Toronto, Ontario M5H 1T1

Phone: 905.403.6900

Toll-free: 1.888.448.7777

E-mail: [customer.relations@ieso.ca](mailto:customer.relations@ieso.ca)

**ieso.ca**



[@IESO\\_Tweets](https://twitter.com/IESO_Tweets)



[linkedin.com/company/IESO](https://www.linkedin.com/company/IESO)