
Connectivity Testing: Dispatch Service Application Programming Interface (API)

February 5, 2024



Table of Contents

Preface	2
TC01 - Access Dispatch Service Using Web API	3
Additional Resources	9

Preface

This document outlines the test cases to be executed as part of the connectivity testing phase for the applications impacted by the Market Renewal Program (MRP). In this phase of testing, the primary objective is to assess and validate the connectivity components of the systems. Comprehensive functional testing phases will be scheduled for a future date and is not in scope of this test.

Please ensure any anomalies, disruptions, or irregularities discovered while performing the connectivity testing are documented in the qTest or Issue Log Template. This will contribute significantly to the overall improvement of the IESO tools.

Precondition:

- 1. API Credentials (username and password) to access <https://webservices-sandboxmrp.ieso.ca/dispatches/DispatchService?wsdl>**

Notes:

- 1. The API tool used to demonstrate the test cases in this document is [Tosca's API Scan](#). User may choose to test with this tool or any other web service tool of their choice.**
- 2. Some of the images in this document reflect the current Dispatch Service application, and will be updated when the MRP application becomes available during Connectivity Testing.**

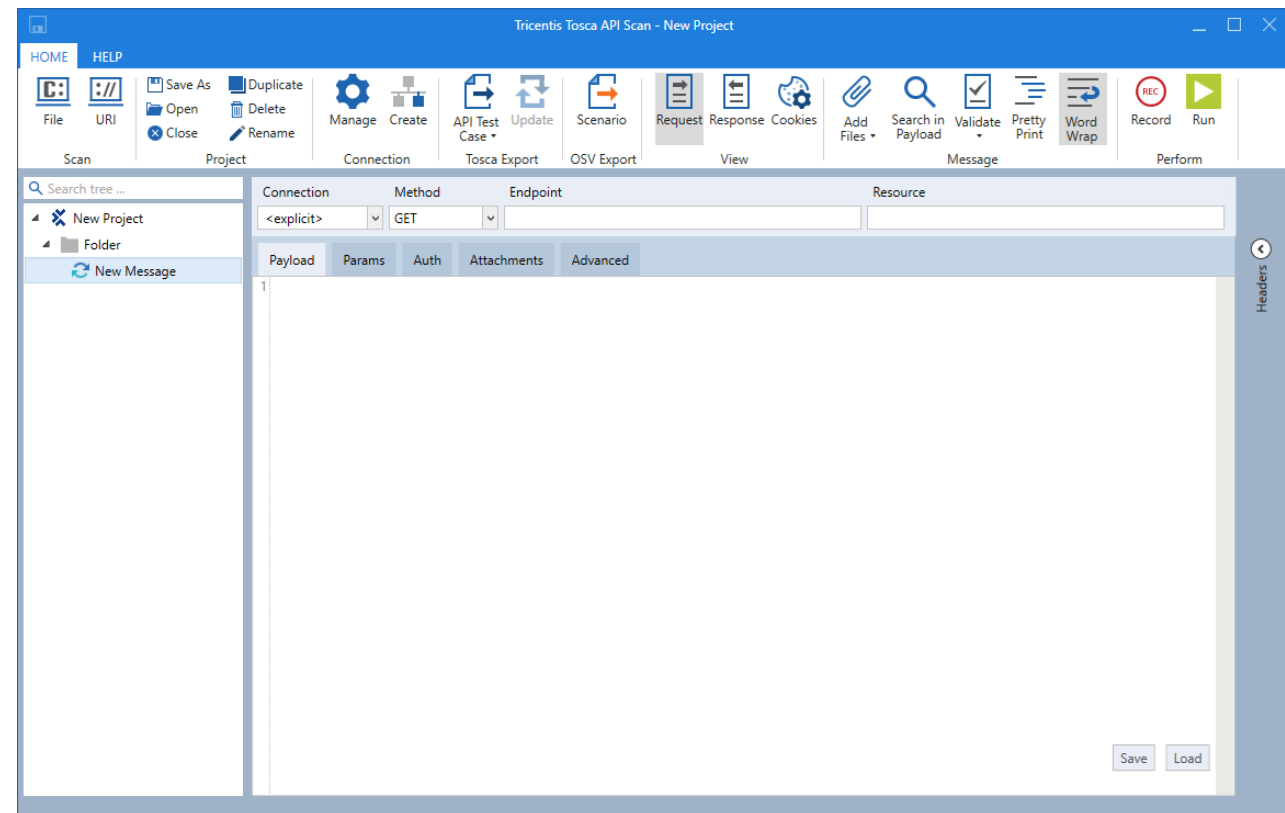
TC01 - Access Dispatch Service Using Web API

Step User Instruction

Expected Result

- 1 Open the web service tool of your choice. In this example, instructions for testing are provided using **Tosca's API Scan** tool.

The web service application (**API Scan**) is opened.



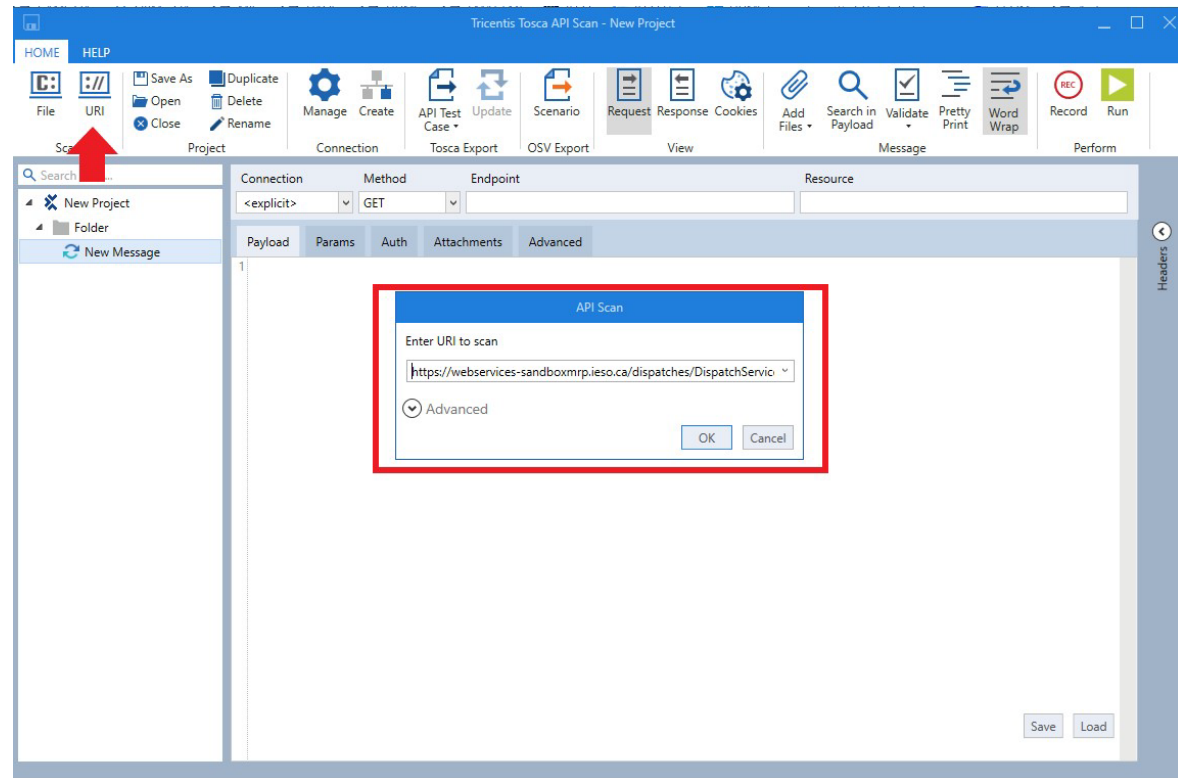
Step User Instruction

- 2 Select URI option from the Home menu at the top and enter the Dispatch Service endpoint:

<https://webservices-sandboxmrp.ieso.ca/dispatches/DispatchService?wsdl>

Expected Result

A small window with space to input the endpoint URL should open.



Step User Instruction**Expected Result**

3 Click **OK** and confirm the project tree is populated on the left panel:

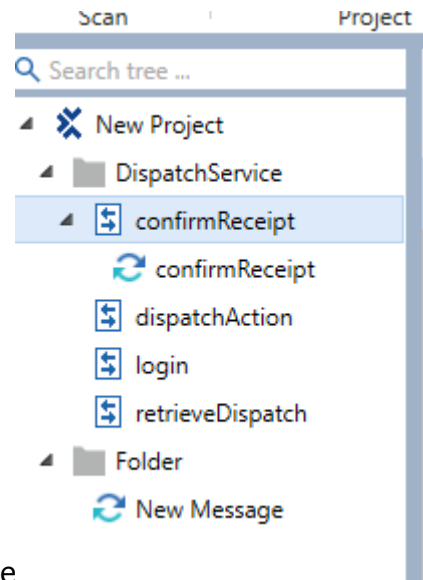
- **Dispatch Service**

- confirmReceipt
- dispatchAction
- login
- retrieveDispatch

- **Folder**

New Message

The project tree on the left should load the following files.



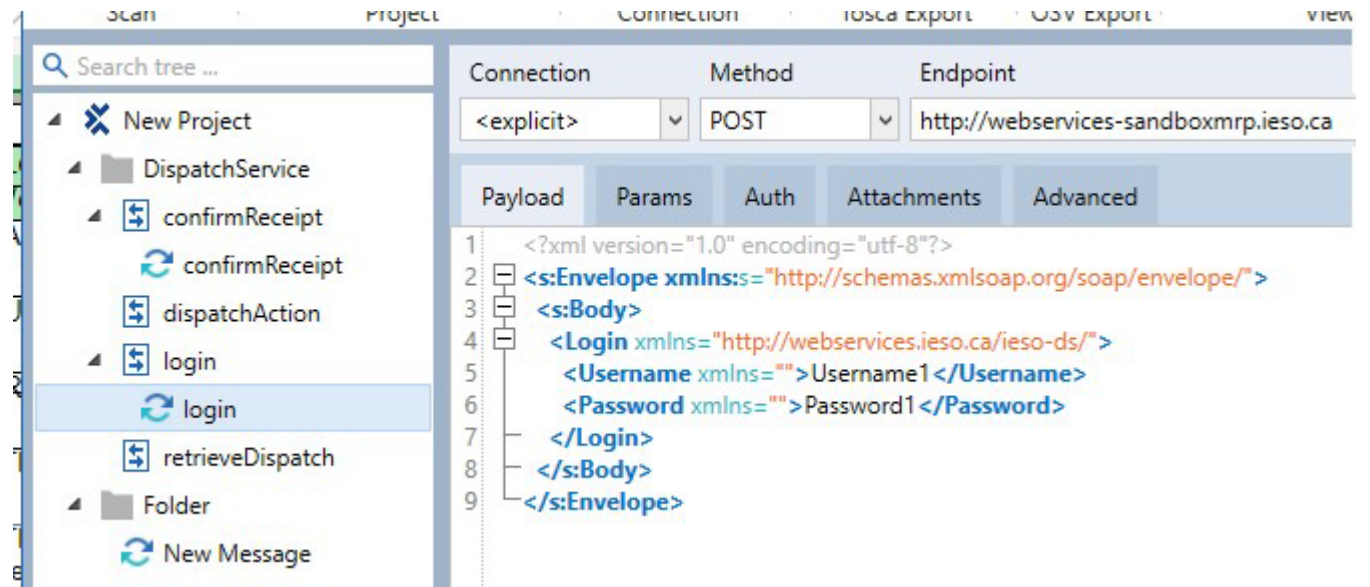
Joanne

Step User Instruction

Expected Result

- Expand the project tree and select **login**.

The login request form should open.

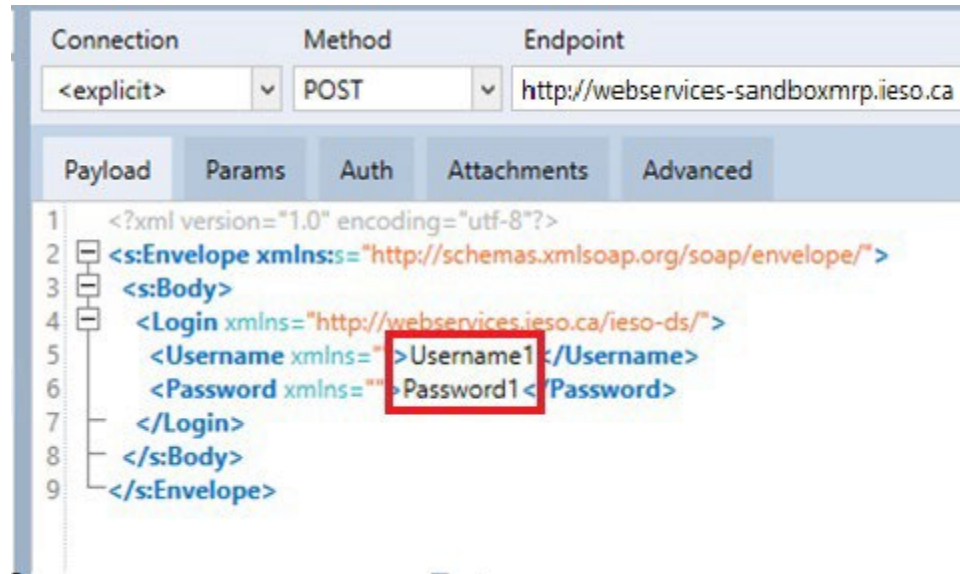


Step User Instruction

Expected Result

- 5 Update the username and password in the Request form.

Form should be updated with the API username and password.



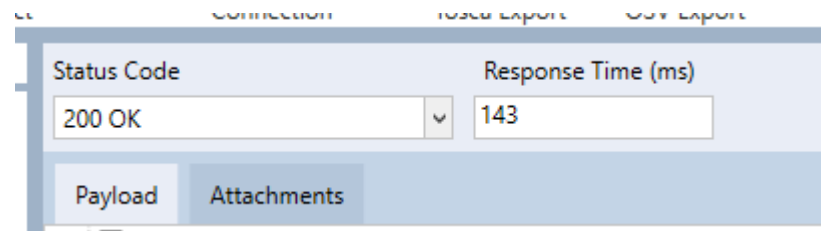
```
1 <?xml version="1.0" encoding="utf-8"?>
2 <s:Envelope xmlns:s="http://schemas.xmlsoap.org/soap/envelope/">
3 <s:Body>
4 <Login xmlns="http://webservices.ieso.ca/ieso-ds/">
5 <Username xmlns="">Username1</Username>
6 <Password xmlns="">Password1</Password>
7 </Login>
8 </s:Body>
9 </s:Envelope>
```


Step User Instruction

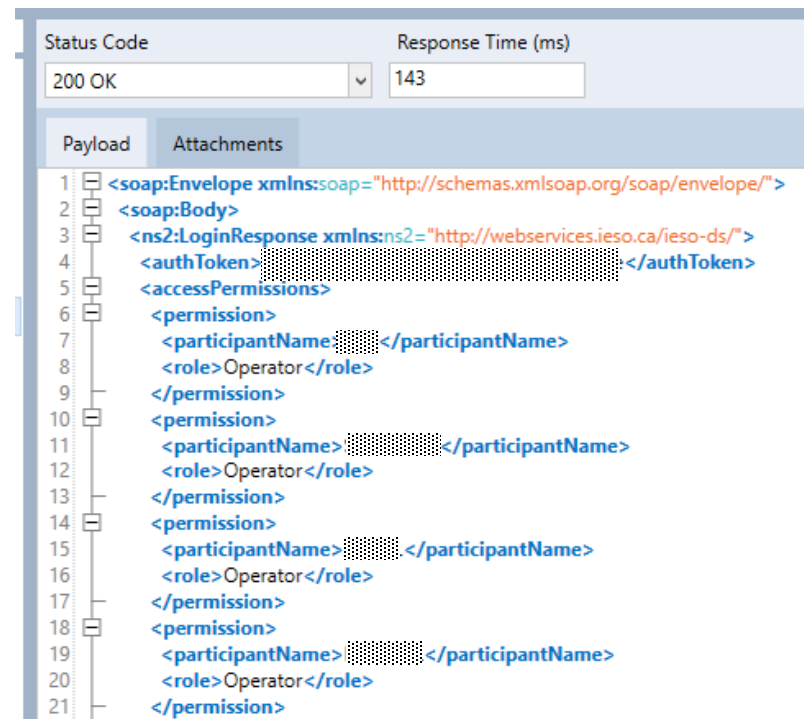
Expected Result

- 6 Select **Run** to send the request form.

A Response should be received with Status Code: **200 OK**.



The payload should display all the permissions the user has.





Additional Resources

- Training materials on the *Dispatch Service System* are available here:
 - [Dispatch Notification Service Web Service Design Specifications](#)
 - [Dispatch Service Web Service Design Specifications](#)

**Independent Electricity
System Operator**

1600-120 Adelaide Street West
Toronto, Ontario M5H 1T1

Phone: 905.403.6900

Toll-free: 1.888.448.7777

E-mail: customer.relations@ieso.ca

ieso.ca

 [@IESO_Tweets](https://twitter.com/IESO_Tweets)

 [linkedin.com/company/IESO](https://www.linkedin.com/company/IESO)