

# Design Element Options

Phase 2 – Session 4  
Single Schedule Market Project

---

November 13, 2017

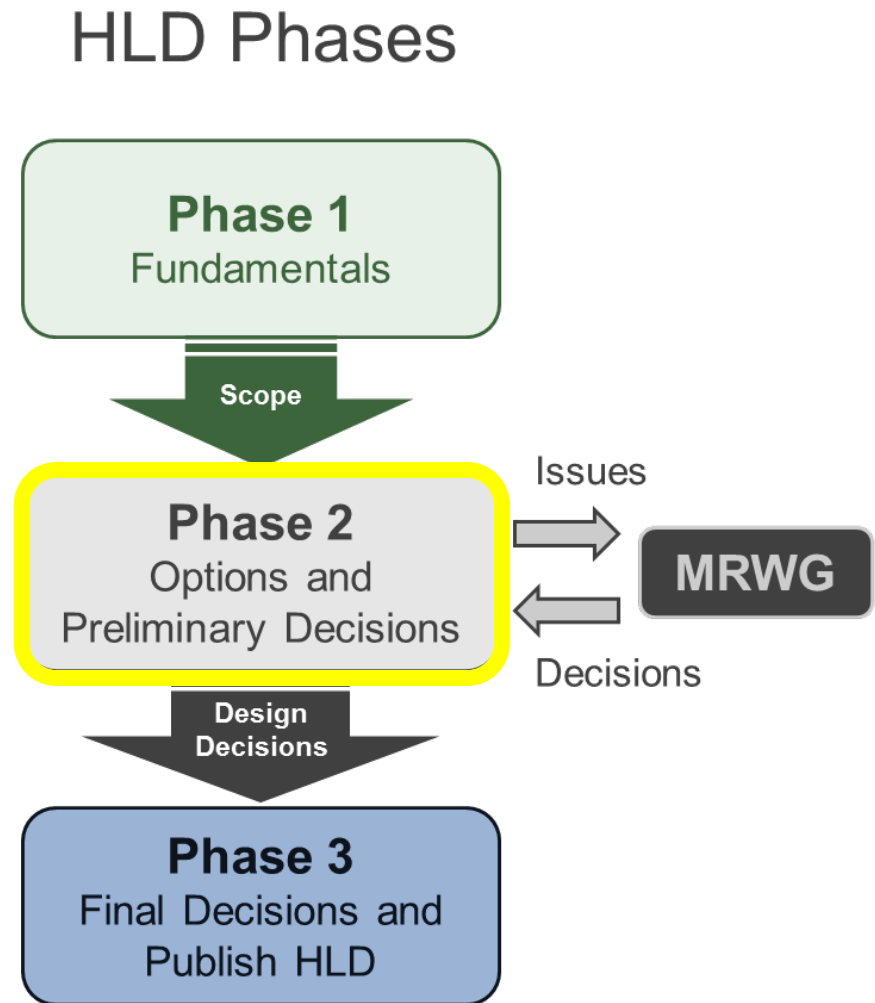
# Today's Agenda

1. Update of the work plan for Single Schedule Market (SSM) stakeholdering
2. Discussion of analysis related to Market Power Mitigation and Load Pricing
3. Preliminary decisions on specific SSM design elements

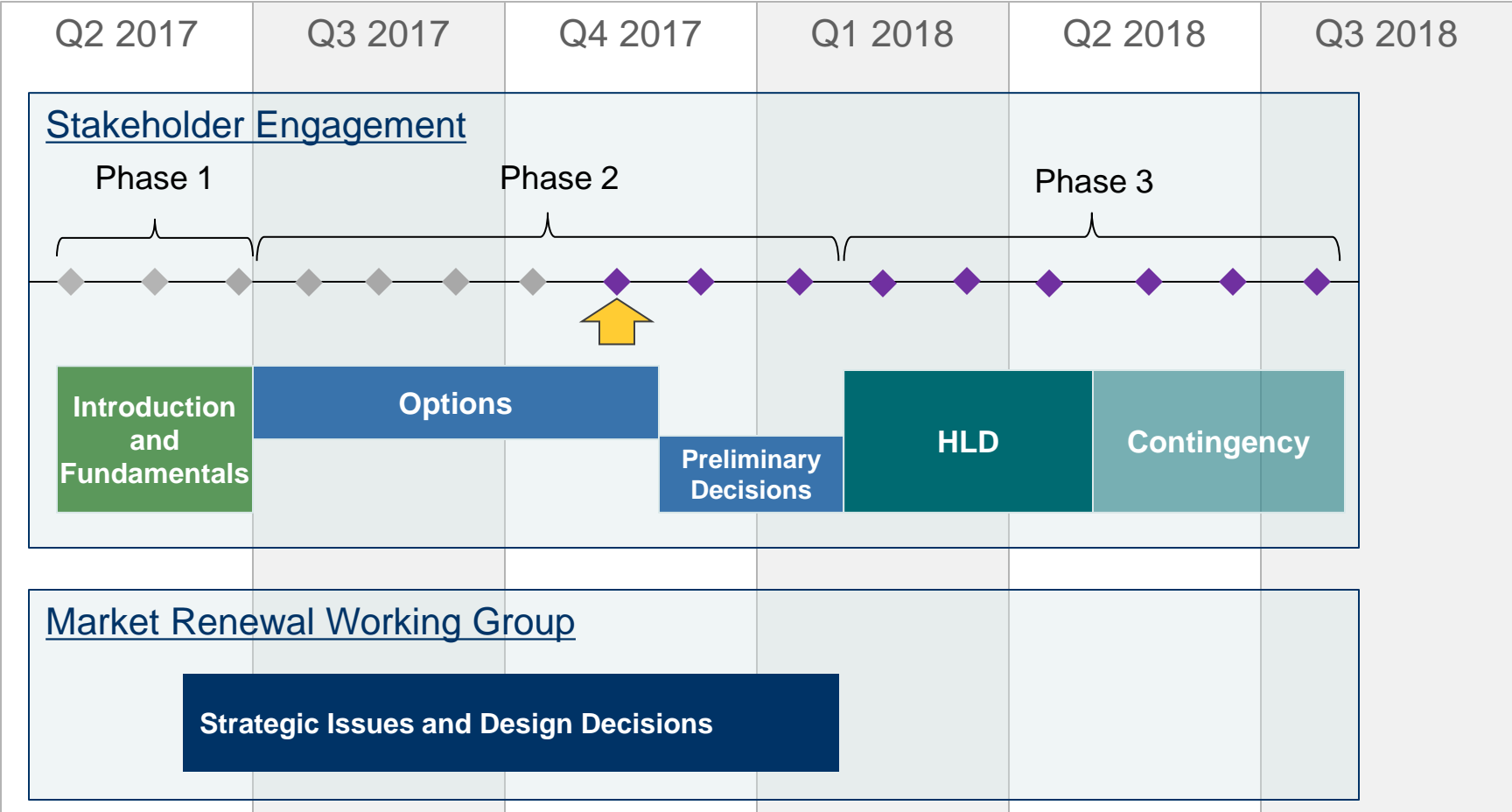
# WORK PLAN FOR SINGLE SCHEDULE MARKET STAKEHOLDERING

# Phases of High Level Design - Reminder

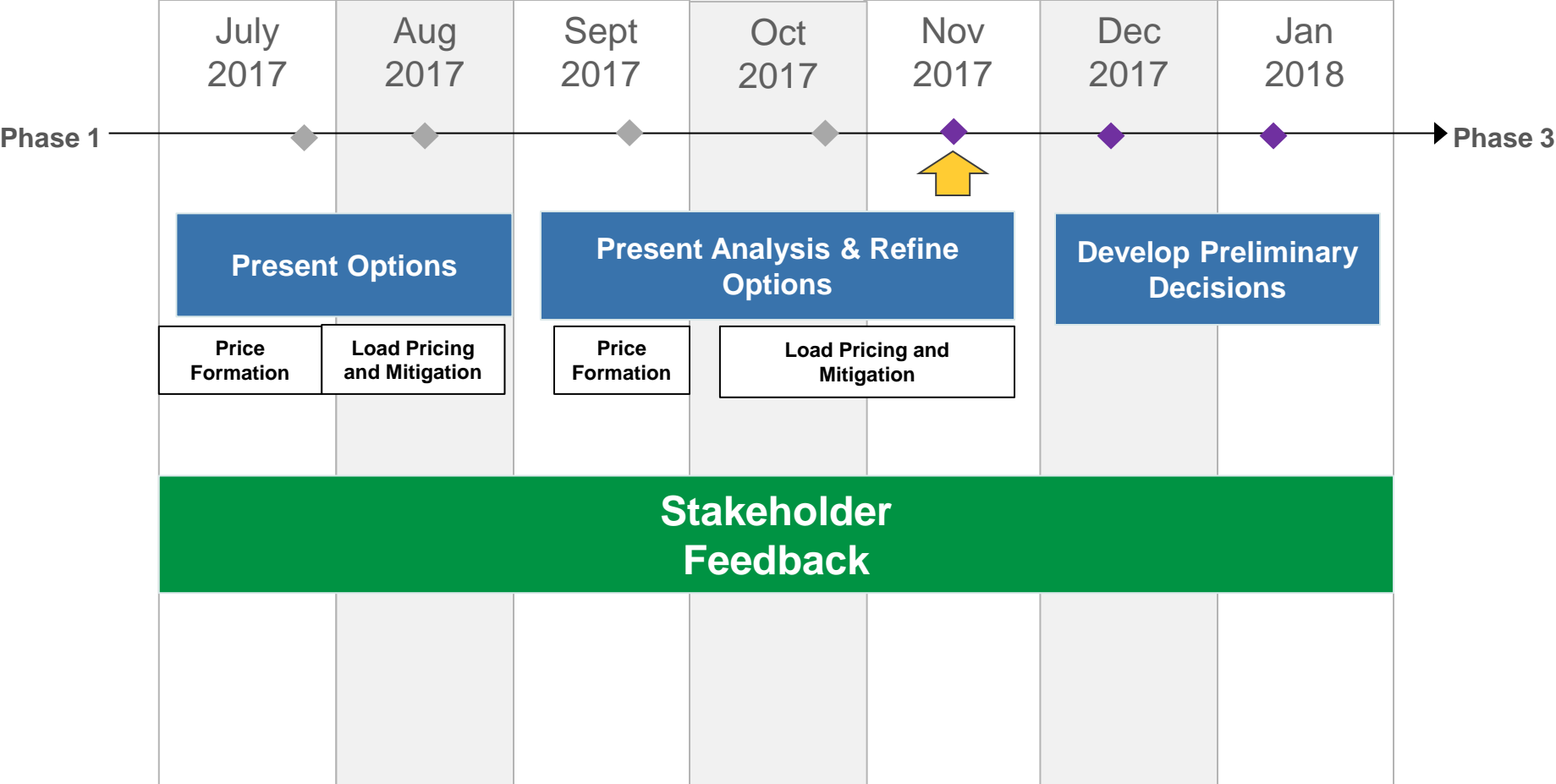
- SE Meetings will be the primary vehicle for design discussions
- In Phase 1 we will identify design elements, provide education, and define scope
- **In Phase 2 we will explore options for the design elements, provide analysis, as appropriate and develop preliminary decisions**
- In Phase 3 we will finalize decisions for all design elements and complete the HLD document
- Throughout this process we are looking for stakeholders to actively and collaboratively work with us on the design



# SSM Timeline



# Stakeholder Engagement Phase 2: Options



# SSM Design Elements: Options Session #4

Today

Market Power Mitigation	
13	Mitigation Process
14	Timing of Application
15	Reference Levels
Load Pricing	
16	Pricing for Loads
17	Financial Transmission Rights
Settlement	
18	Make Whole Payments
19	Uplift

# Today's Objectives – Outcomes and Expectations

- A discussion of some of the results/implications of the mitigation and load pricing analysis with stakeholders
  - FTI will also share their views on the analysis
- Based on stakeholder feedback as well as IESO analysis, we are presenting some preliminary decisions to stakeholders
  - Appears to be alignment between the IESO, FTI and stakeholders on 12 design elements
  - Stakeholders are encouraged to identify any second level design issues that they feel should be established and discussed in order to facilitate the detailed design
- The SSM design element tracker has been updated reflecting the preliminary decisions



# Preliminary Decisions – 12 Design Elements

Today

Design Elements	
1	Energy Price - Congestion Component ✓
2	Energy Reference Price ✓
3	Energy Price – Loss Component ✓
4	Ex Post vs. Ex Ante Pricing ✓
6	Supplier Pricing ✓
7	Operating Reserve Reference Price ✓
8	Operating Reserve Price - Congestion Component ✓
11	Multiple Interval Optimization ✓
13	Mitigation Process ✓
14	Timing of Application ✓
15	Reference Levels ✓
18	Make Whole Payments ✓

# Today's Objectives – Feedback

- Prioritize design elements requiring further analysis or research
  - What aspects of load pricing require further examination or clarity?
- Identify any additional analysis/data that may be helpful in evaluating specific options
- Identify any second level design issues that can be established