

# Changes to Market Manuals

June 11, 2010



- Business requirement areas
  - Enrolment
  - Initialization
  - Optimization
  - Real-Time
  - Settlements
- Market Manuals affected
  - Market Entry, Maintenance & Exit
  - Market Administration
  - Market Operations
  - Settlements
  - System Operations
  - Day Ahead Commitment Process Operations and Settlement

- Enrolment (6 business days in advance)
  - Registration data
  - Expedited operational data
- Initialization (6:00 to 10:00 day-ahead)
  - Submission of dispatch data
  - Submission of daily generator data
  - Submission of AGC capacity
- Optimization (10:00 to 15:00 day-ahead)
  - Re-submission of dispatch data
  - Day-ahead schedule of record – schedules and commitments
  - Commitments passed to pre-dispatch

- Real-time (after 15:00 day-ahead)
  - De-commitment
  - Withdrawal
- Settlements (10 business days after the trade day)
  - DA-PCG
  - Withdrawal, import, export and linked wheel failure charges

- Market Entry, Maintenance & Exit Manual
  - 1.2 Facility Registration, Maintenance & De-registration (MDP\_PRO\_0016)
    - *Enrolment*

- Market Administration Manual
  - 2.14 Information Confidentiality Catalogue (IMO\_CAT\_0002)
    - *Enrolment*
    - *Initialization*
    - *Optimization*
    - *Real-Time*
    - *Settlements*

- Market Operations Manual
  - 4.0 Market Operations Overview (MDP\_MAN\_004)
    - *Initialization*
  - 4.2 Submission of Dispatch Data in the Real Time Energy and Operating Reserve Markets (MDP\_PRO\_0027)
    - *Initialization, Optimization, Report & Notify*
  - 4.3 Real Time Scheduling of the Physical Markets (IMP\_PRO\_0034)
    - *Optimization*

- Settlements Manual
  - 5.5 Physical Market Settlement Statements (MDP\_PRO\_0033)
    - *Settlements*

- System Operations Manual
  - 7.2 Near-Term Assessments and Reports (IMP\_PRO\_0033)
    - *Initialization*
  - 7.3 Outage Management (IMP\_PRO\_0035)
    - *Initialization*

- Day-Ahead Commitment Process Operations and Settlement
  - 9.0 Day-Ahead Commitment Process Operations and Settlement (IESO\_MAN\_0041)
    - *Enrolment*
    - *Initialization*
    - *Optimization*
    - *Settlements*
    - *Report & Notify*

# Market Manual 9 – Day-Ahead Commitment Process

Friday, June 11, 2010



## Proposed Structure of Market Manual 9

- Market Manual Parts
- Table of Contents
- Workflow diagram
- Procedural steps

- A MM can be comprised of several chapters or parts. The first part is an overview that describes the manual and the individual parts.
- Subsequent parts contain the specific procedures related to a particular activity (see MM 9 Parts below)

Document ID	Part No.	Name of Procedure Document
IESO_MAN_0041	9.0	Day Ahead Commitment Process Overview
IESO_MAN_00xx	9.1	Submitting Registration Data for the Day Ahead Commitment Process
IESO_MAN_00xx	9.2	Submitting Operational and Market Data for the Day Ahead Commitment Process
IESO_MAN_00xx	9.3	Operation of the Day Ahead Commitment Process
IESO_MAN_00xx	9.4	Real-Time Integration of the Day Ahead Commitment Process
IESO_MAN_00xx	9.5	Settlement of the Day Ahead Commitment Process

# Market Manual Table of Contents

## **1. Market Manuals**

## **2. About this Manual**

### 2.1 Conventions

## **3. Introduction**

### 3.1 Purpose

### 3.2 Scope

## **4. Overview**

## **5. Procedures**

### 5.1 Procedure 1

#### 5.1.1 Overview

#### 5.1.2 Workflow

#### 5.1.3 Procedural Steps

### 5.2 Procedure 2

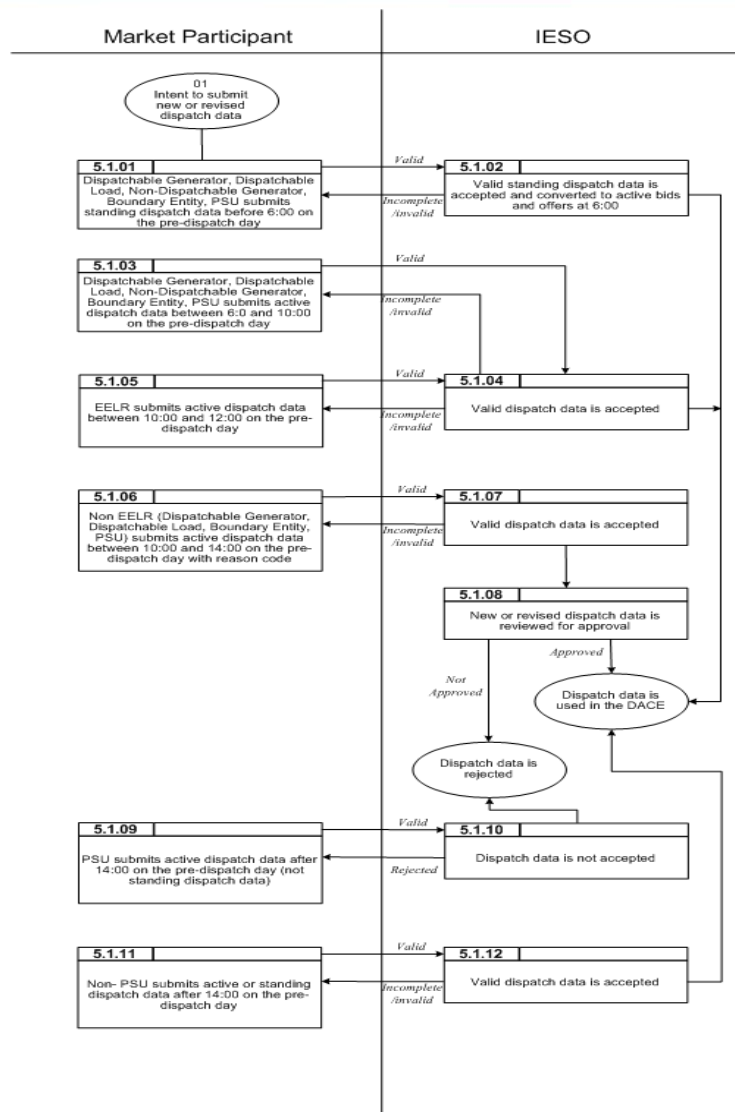
#### 5.2.1 Overview

#### 5.2.2 Workflow

#### 5.2.3 Procedural Steps

A workflow diagram is provided for each procedure. It shows the tasks involved in the procedure and the interaction between the parties. A description of the symbols used in the workflow is shown in the table below:

Legend	Description
Oval	An event that triggers the task or that completes the task. Trigger events and completion events are numbered sequentially within procedure (01 to 99)
Task Box	Shows reference number party responsible for performing task (if “other party”), and the task name or brief summary of task. Reference number (e.g., 1A.02) indicates procedure number within current <i>market manual</i> (1), sub-procedure identifier (if applicable) (A), and task number (02)
Solid Horizontal Line	Shows information flow between the <i>IESO</i> and external parties
Solid Vertical Line	Shows linkage between tasks
Broken Line	Links trigger events and completion events to preceding or succeeding task



A table of procedural steps is provided for each procedure. It describes the tasks shown in the workflow diagram in more detail and identifies the tools used in completing the task. An example of a procedural step is shown in the table below:

Ref #	Action	Tools
5.1.01	<p>MP Submits standing dispatch data before 6:00 on the pre-dispatch day:</p> <ul style="list-style-type: none"> <li>•Incremental energy and operating reserve bids &amp; offers</li> <li>•Speed-no-load cost; and</li> <li>•Start-up cost.</li> </ul> <p>Applies to all resource types:</p> <ul style="list-style-type: none"> <li>•Dispatchable Generators,</li> <li>•Non-Dispatchable Generators,</li> <li>• Dispatchable Load,</li> <li>•Boundary Entities,</li> <li>•PSU's</li> </ul>	<p>Market Operation System - Market Participant Graphical User Interface (MPI) or Application Programmers Interface (API)</p>