



ONTARIO POWER AUTHORITY





May 13, 2010



Ontario's Renewable Energy Feed-In Tariff Program

Jason Chee-Aloy
Director, Generation Procurement
Ontario Power Authority

FIT and microFIT Program Key Features

- Open to various renewable energy supply technologies
 - Bio-energy technologies 
 - Solar PV 
 - Waterpower 
 - Wind 
- Large standard offer procurement
 - Standard rules and contracts
 - Different prices for different technologies by project sizes
 - Prices cover development costs and provide a reasonable rate of return
- Long-term contracts: 20-years (40-years for waterpower)
- Equity opportunities for Aboriginal and Community projects
- Domestic Content requirements for wind and solar PV projects

FIT and microFIT Price Schedule

Renewable Fuel	Capacity Range	FIT Price (¢/kWh)
On Farm Biogas * ^	≤ 100 kW	19.5
On Farm Biogas * ^	> 100 kW ≤ 250 kW	18.5
Biogas * ^	≤ 500 kW	16.0
Biogas * ^	> 500kW ≤ 10 MW	14.7
Biogas * ^	> 10 MW	10.4
Biomass * ^	≤ 10 MW	13.8
Biomass * ^	> 10 MW	13.0
Landfill gas * ^	≤ 10 MW	11.1
Landfill gas * ^	> 10 MW	10.3
Rooftop or Ground Mounted Solar PV	≤ 10 kW	80.2
Rooftop Solar PV	> 10 kW ≤ 250 kW	71.3
Rooftop Solar PV	> 250 kW ≤ 500 kW	63.5
Rooftop Solar PV	> 500 kW	53.9
Ground Mounted Solar PV *	> 10 kW ≤ 10 MW	44.3
Waterpower * ^	≤ 10 MW	13.1**
Waterpower * ^	> 10 MW ≤ 50 MW	12.2**
Off-shore Wind *	Any size	19.0
On-shore Wind *	Any size	13.5

* Eligible for Aboriginal or Community Adder

** Contract term for water power 40 years

3 ^ Paid On/Off Peak Price: 135%/90% of FIT Price

FIT and microFIT Program

- FIT Program (projects > 10 kW): 1) < 500 kW; and, 2) > 500 kW

FIT Program
Projects over 10 kilowatts

Information for renewable energy developers



[Click here to learn more](#)

microFIT Program
Projects 10 kilowatts or less

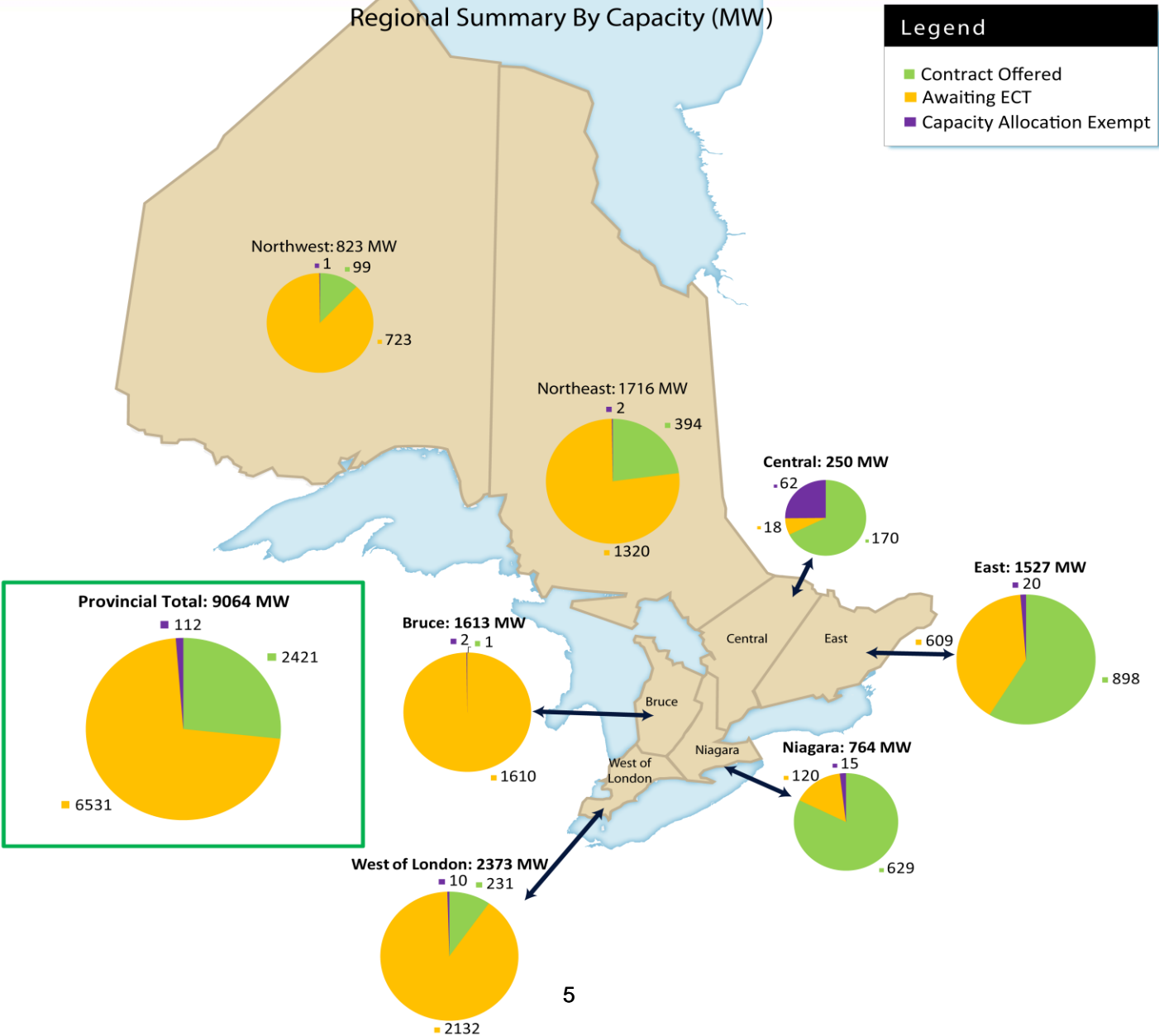
Information for homeowners, small businesses and others



[Click here to learn more](#)

- microFIT program (projects < 10 kW) highly simplified with different contract execution process

4. Program Uptake: FIT Projects > 500 kW



Regional & Technological Summary of Projects

Regional Breakdown								
Area	Provincial	East	Central	Niagara	West of London	Bruce	Northwest	Northeast
Contract Offered	184	60	22	28	7	1	12	54
Sum of MWs	Provincial	East	Central	Niagara	West of London	Bruce	Northwest	Northeast
Contract Offered	2421	898	170	629	231	1	99	394

Technology Breakdown										
Fuel Source	Provincial	Bio-Gas	Bio-Gas on Farm	Biomass	Landfill Gas	Solar Ground	Solar Rooftop	Water	Wind (On-shore)	Wind (Off-shore)
Contract Offered	184	7	0	2	4	76	1	46	47	1
Sum of MWs	Provincial	Bio-Gas	Bio-Gas on Farm	Biomass	Landfill Gas	Solar Ground	Solar Rooftop	Water	Wind (On-shore)	Wind (Off-shore)
Contract Offered	2421	16	0	19	15	651	1	192	1229	300

*Summary of projects (> 500 kW) received
between Oct 1 – Dec 1, 2009
(‘Launch’ Period)*

Aboriginal & Community Summary of Projects

Aboriginal								
Area	Provincial	East	Central	Niagara	West of London	Bruce	Northwest	Northeast
Contract Offered	16	1	1	0	0	0	4	10
Sum of MWs	Provincial	East	Central	Niagara	West of London	Bruce	Northwest	Northeast
Contract Offered	120	5	20	0	0	0	35	60

Community								
Area	Provincial	East	Central	Niagara	West of London	Bruce	Northwest	Northeast
Contract Offered	20	11	0	7	0	1	0	1
Sum of MWs	Provincial	East	Central	Niagara	West of London	Bruce	Northwest	Northeast
Contract Offered	264	99	0	163	0	1	0	1

Summary of Aboriginal and Community FIT projects (> 500 kW) received between Oct 1 – Dec 1, 2009 ('Launch' Period)

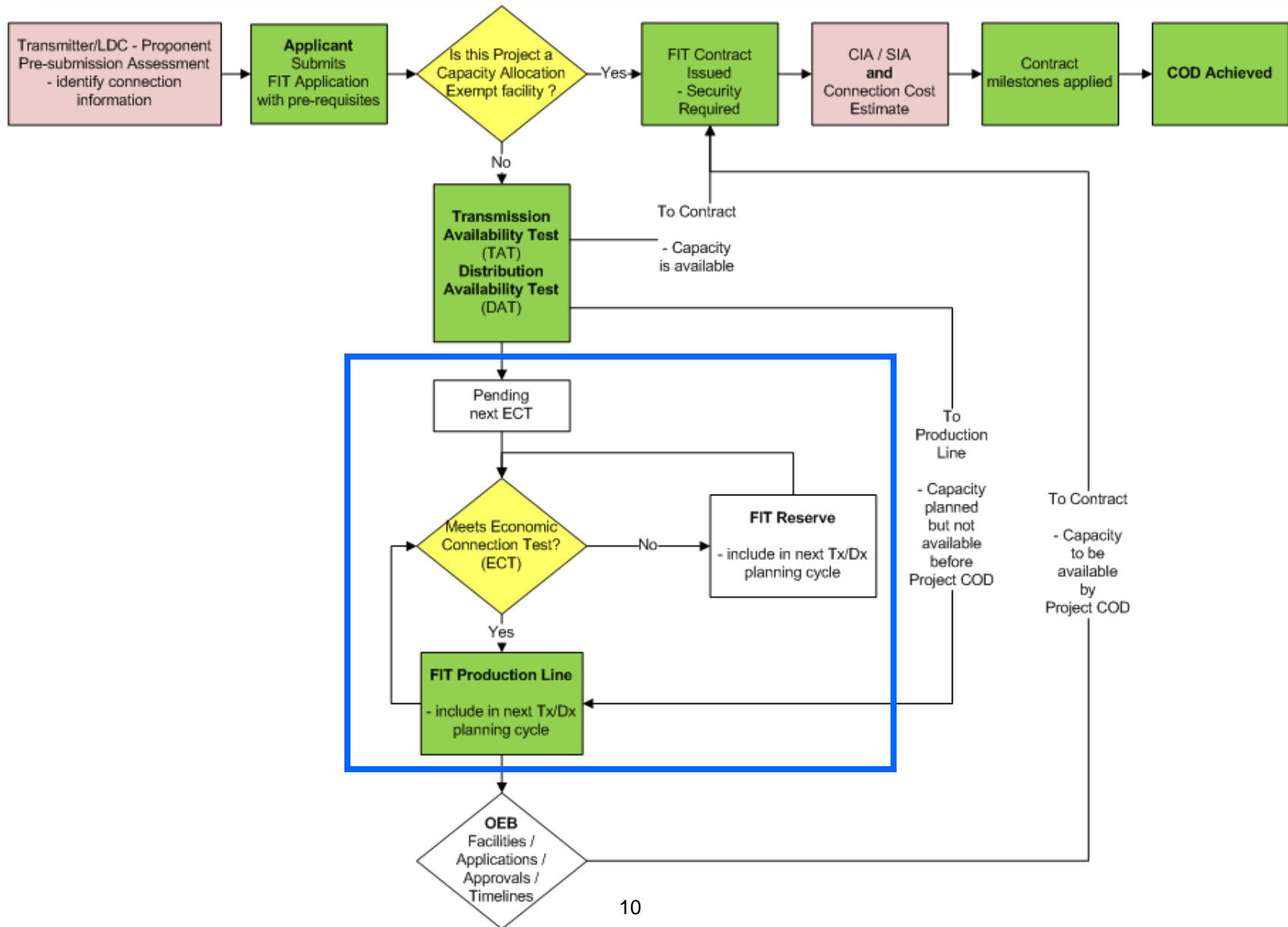
CAE FIT Projects < 500 kW

FIT Launch Applications - Capacity Allocation Exempt (CAE)			
Energy Source	# of Applications	Capacity (MW)	% of total
Biogas	9	4.1	3.7%
Ground Mounted Solar PV	6	1.9	1.6%
Landfill Gas	0	0.0	0.0%
Off Shore Wind	0	0.0	0.0%
On Shore Wind	3	1.0	0.9%
On-Farm Biogas	11	2.2	2.0%
Renewable Biomass	1	0.3	0.2%
Rooftop Solar PV	476	101.8	90.8%
Water	4	0.9	0.8%
TOTAL	510	112.2	100%

microFIT Projects (as of May 07, 2010)

Energy Source	Number of Applications	Capacity (kW)
Solar Photovoltaic (PV)	11,168	101,787.63
Wind	55	428.14
Renewable biomass	11	89.6
Landfill Gas	4	39.41
Water	6	27.85
Biogas	5	48.52
Total	11,249	102,421.15

FIT Application and Contract Process



FIT Applicant Projects and ECT

- Capacity (MW) of FIT applicant projects > present physical connection capacity
 - Many projects will not be able to physically connect at this time, therefore they were not offered contracts
- FIT program (section 5.4 of Rules) states OPA will perform an Economic Connection Test (ECT)
 - ECT helps plan and assess need, scope and economics of potential transmission expansion to enable future connection of FIT projects
 - Essentially, ECT is a process for prioritizing economic transmission expansion based on uptake of FIT applicant projects

Assessing FIT Applications – Post ‘Launch’

Step 1: Transmission Availability Test (TAT)

- TAT applied to applications not offered contracts and new applicant projects (post ‘Launch’)
 - TAT will result in applications being offered FIT contracts or moving to subsequent ECT

Step 2: ECT

- ECT will be run every 6-months
 - ECT will result in applications moving to Production Line or Reserve
- ECT will be the framework for managing FIT applications on an ongoing basis
 - Facilitates applications moving from Reserve to Production Line and ultimately to being offered FIT contracts

Summary and Next Steps

- First round of FIT and microFIT contract offers > 2,500 MW of new renewable energy supply
- Applications for FIT and microFIT projects still being received
 - CAE and microFIT applicant projects not part of forthcoming ECT
 - In future, CAE applicant projects may be subject to TAT
- ECT scheduled to start in August 2010
 - Bruce-to-Milton transmission project to be included in Aug ECT
 - Unlocks approx. 1,500 MW of connection capacity
 - Second round of FIT (non-CAE) contracts could be awarded by end of year

OPA Query Options

- Email
 - FIT fit@powerauthority.on.ca
 - microFIT microfit@powerauthority.on.ca
 - OPA Information Service info@powerauthority.on.ca
- Telephone
 - FIT Call Centre 1-888-387-3403 (M-F 9am-5pm)
- Fax
 - FIT and microFIT fax 1-866-833-7978
- Website
 - Online searchable Q&A facility
 - Submission of written questions