

Power Measurement ION Updates

Revenue Metering Sub-Committee Meeting

March 8, 2006

Dave Wilkinson



- q **IESO completed testing of the ION 8600 meter, firmware version 311 in November 2005**
- q **Measurement Canada has issued a draft Notice of Approval (NOA) AE-0928 Rev. 8 on 2006-02-28**
- q **IESO will add the ION 8600 meter, firmware version 311 to the Conforming Meter list as soon as the final MC NOA is issued**
- q **Please note this meter will be assigned a new model numbering system as follows:**
 - **8600 Feature Set 'A' = former ION 8500**
 - **8600 Feature Set 'B' = former ION 8400**
 - **8600 Feature Set 'C' = former ION 8300**

Using ION Setup to View Revenue Log Data in an HHF Data File (1)

q Why use this tool?

- You may require independent confirmation that data retrieved by MV-90 is identical to data stored in meter
- Also helpful if you receive HHF file from a Meter Technician when remote communication with meter is unavailable

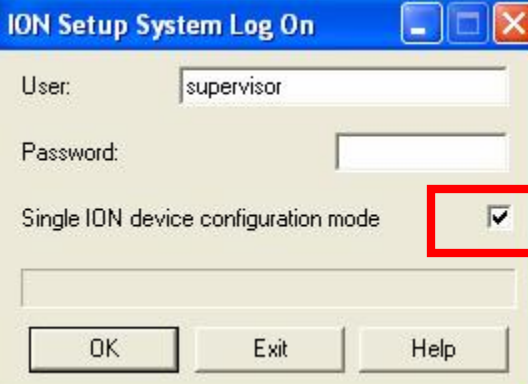
q Requires user to load a custom display table file called “HHF Import.pml” available from PM Support

q File must be copied to the Data Recorder sub-folder of each meter type you want to be able to view an HHF file

- (i.e. TABLES\ABB8500\Version 2.0 Default\Data Recorders)

Using ION Setup to View Revenue Log Data in an HHF Data File (2)

- q Must open ION Setup in the "Single ION device configuration mode"
- q Then select a Connection Type of "Offline" and meter type



ION Setup System Log On

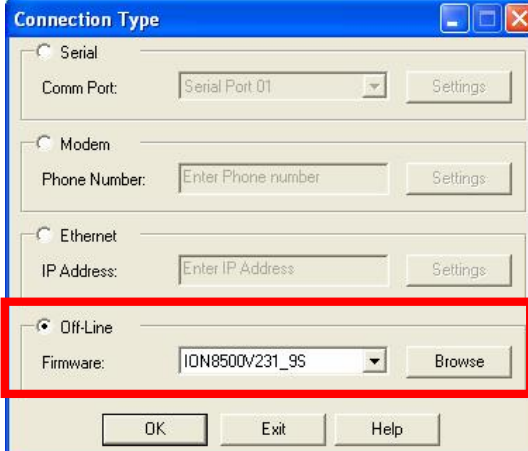
User: supervisor

Password: []

Single ION device configuration mode

[]

OK Exit Help



Connection Type

Serial
Comm Port: Serial Port 01 Settings

Modem
Phone Number: Enter Phone number Settings

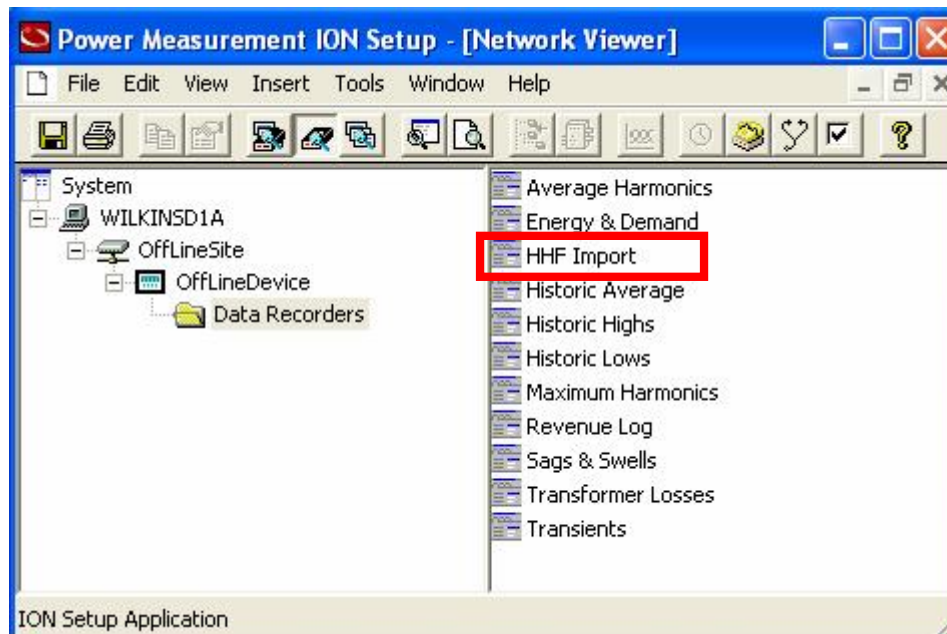
Ethernet
IP Address: Enter IP Address Settings

Off-Line
Firmware: ION8500V231_9S Browse

OK Exit Help

Using ION Setup to View Revenue Log Data in an HHF Data File (3)

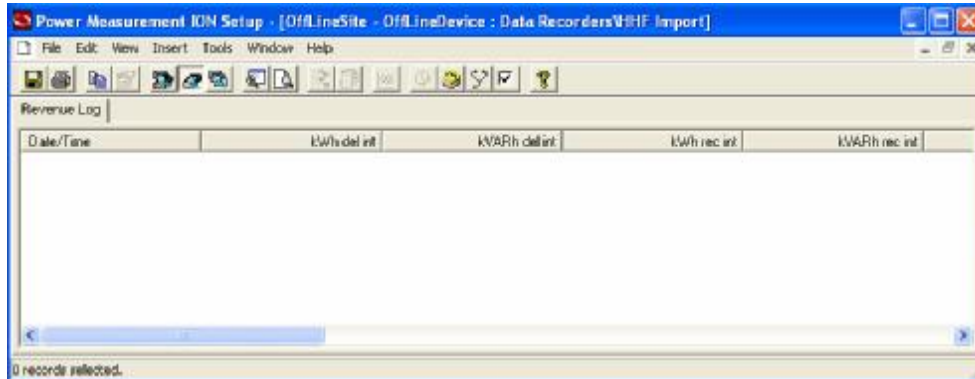
q Then select “View, Data Screens” to see this:



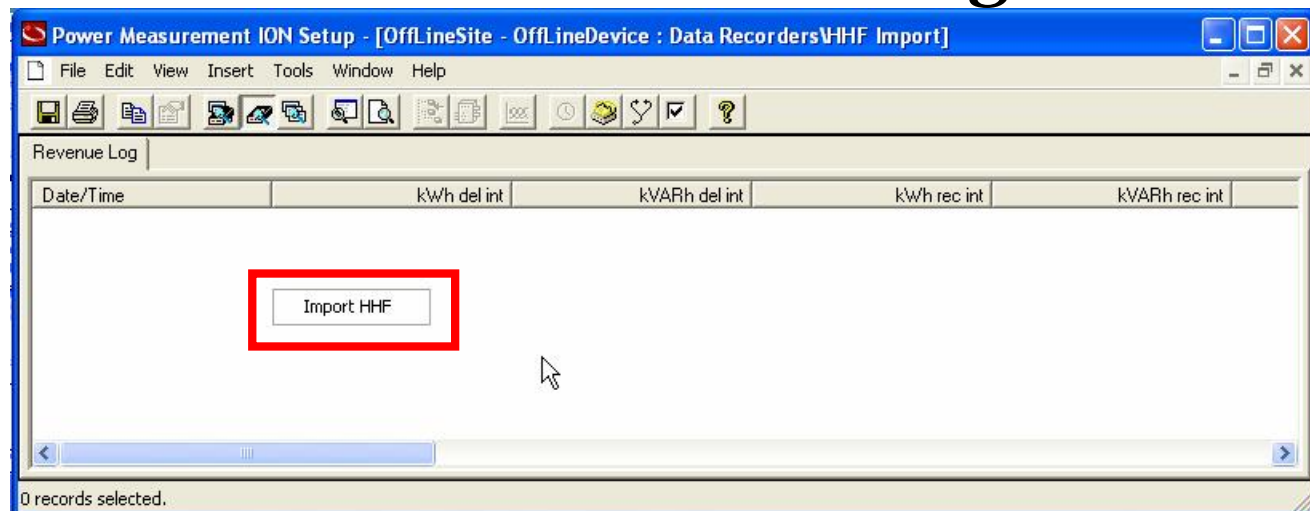
q Next double click “Import HHF”

Using ION Setup to View Revenue Log Data in an HHF Data File (4)

q You will then see this:

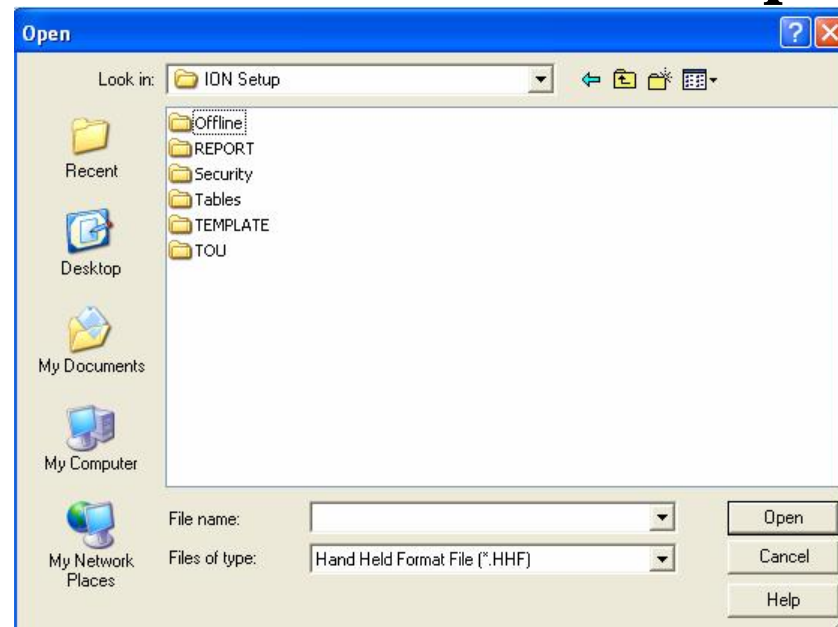


q Point to the centre of the screen and right click to see this:



Using ION Setup to View Revenue Log Data in an HHF Data File (5)

q Select “Import HHF” and you will be prompted to point to the filename to import



q When the file opens, you will then see:

Using ION Setup to View Revenue Log Data in an HHF Data File (6)

Power Measurement ION Setup - [OffLineSite - OffLineDevice : Data Recorders\HHF Import]

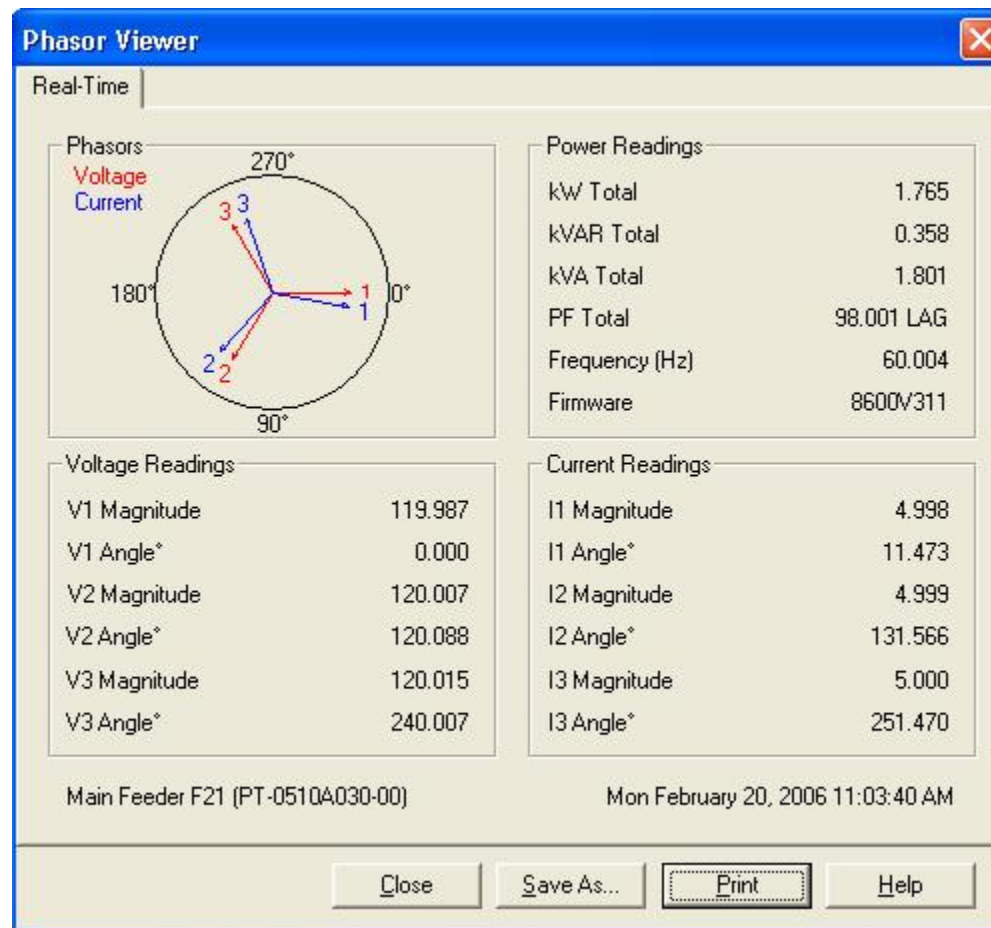
File Edit View Insert Tools Window Help

Revenue Log

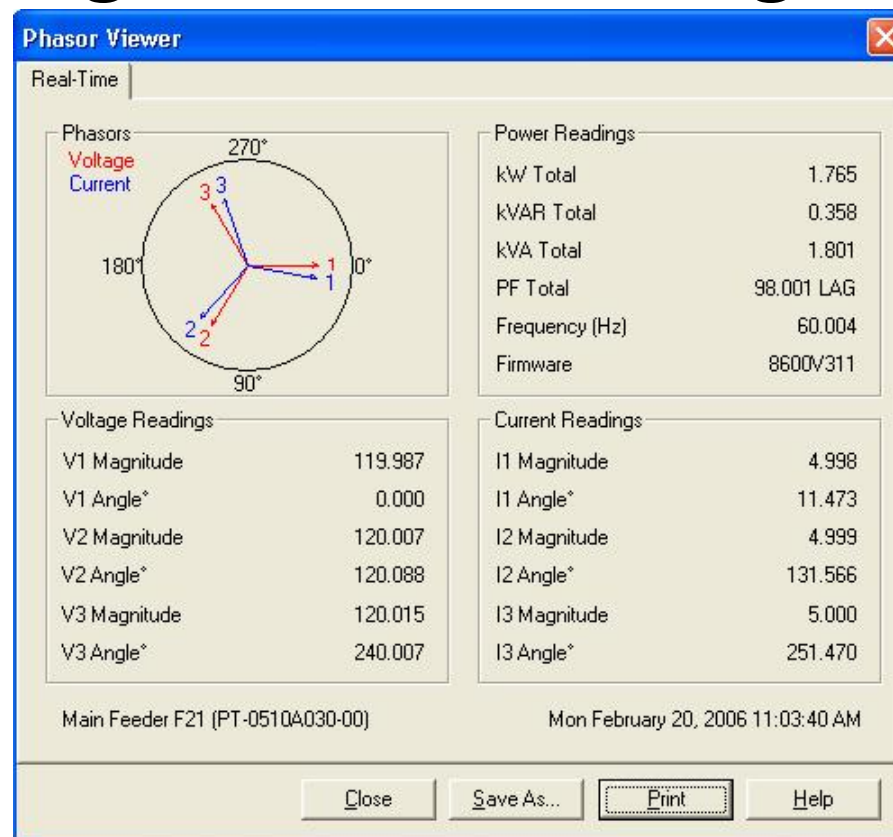
Date/Time	kWh del int	kVARh del int	kWh rec int	kVARh rec int						
2006-02-01 10:10:00.000 AM	0.025820000	0.000000000	0.000000000	0.007961000	1,146.489501953	1,174.174682617	1,136.977172852	0.010258000	0.049394999	0.2
2006-02-01 10:05:00.000 AM	0.024966000	0.000000000	0.000000000	0.008133000	1,141.354003906	1,168.207519531	1,131.750122070	0.013373000	0.039198998	0.2
2006-02-01 10:00:00.000 AM	0.025814001	0.000000000	0.000000000	0.008075000	1,143.878051758	1,171.234741211	1,134.822631836	0.015635001	0.043363001	0.2
2006-02-01 09:55:00.000 AM	0.026417000	0.000000000	0.000000000	0.008176000	1,142.846557617	1,169.042846680	1,133.858398438	0.014844000	0.044652998	0.2
2006-02-01 09:50:00.000 AM	0.028285000	0.000000000	0.000000000	0.008207000	1,145.779296875	1,172.425781250	1,136.457519531	0.014378000	0.052740000	0.3
2006-02-01 09:45:00.000 AM	0.027404999	0.000000000	0.000000000	0.008082000	1,145.875122070	1,172.785522461	1,136.776611328	0.010579000	0.055192001	0.3
2006-02-01 09:40:00.000 AM	0.025800001	0.000000000	0.000000000	0.007974000	1,146.661743164	1,173.568847656	1,137.612548828	0.012310000	0.041958999	0.2
2006-02-01 09:35:00.000 AM	0.025799001	0.000000000	0.000000000	0.007930000	1,148.909667969	1,176.462280273	1,139.592529297	0.009955000	0.041232001	0.3
2006-02-01 09:30:00.000 AM	0.024603000	0.000000000	0.000000000	0.008267000	1,149.690185547	1,177.019653320	1,140.789062500	0.010096000	0.039728001	0.2
2006-02-01 09:25:00.000 AM	0.025691999	0.000000000	0.000000000	0.008146000	1,151.075073242	1,178.434814453	1,142.631835938	0.009762000	0.040724002	0.3
2006-02-01 09:20:00.000 AM	0.027166000	0.000000000	0.000000000	0.007866000	1,151.645019531	1,179.123779297	1,142.827514648	0.011083000	0.041462999	0.3
2006-02-01 09:15:00.000 AM	0.028764000	0.000000000	0.000000000	0.007563000	1,151.274658203	1,178.450195313	1,142.582519531	0.011410000	0.046980001	0.3
2006-02-01 09:10:00.000 AM	0.025977001	0.000000000	0.000000000	0.007832000	1,150.555297852	1,177.785034180	1,141.957885742	0.011186000	0.034942001	0.3
2006-02-01 09:05:00.000 AM	0.026059000	0.000000000	0.000000000	0.007932000	1,148.873657227	1,176.325805664	1,140.203491211	0.013460000	0.043055002	0.2
2006-02-01 09:00:00.000 AM	0.028386001	0.000000000	0.000000000	0.007806000	1,148.680664063	1,176.856445313	1,140.076171875	0.014753000	0.047525998	0.3
2006-02-01 08:55:00.000 AM	0.025648000	0.000000000	0.000000000	0.007796000	1,145.073120117	1,173.075073242	1,136.440673828	0.012194000	0.036242001	0.2
2006-02-01 08:50:00.000 AM	0.024536001	0.000000000	0.000000000	0.007798000	1,143.729248047	1,171.881713867	1,134.712280273	0.009895000	0.043023001	0.2
2006-02-01 08:45:00.000 AM	0.025225000	0.000000000	0.000000000	0.007853000	1,140.532836914	1,167.674316406	1,131.194702148	0.011086000	0.043697000	0.2
2006-02-01 08:40:00.000 AM	0.025424000	0.000000000	0.000000000	0.008094000	1,142.079833984	1,169.703125000	1,132.824096680	0.013150000	0.042045999	0.2
2006-02-01 08:35:00.000 AM	0.025521001	0.000000000	0.000000000	0.008158000	1,141.765747070	1,169.129028320	1,132.575073242	0.012329000	0.037974000	0.2
2006-02-01 08:30:00.000 AM	0.025002999	0.000000000	0.000000000	0.008211000	1,143.058227539	1,170.694091797	1,133.814331055	0.011660000	0.038508002	0.2
2006-02-01 08:25:00.000 AM	0.024551000	0.000000000	0.000000000	0.007925000	1,141.879759766	1,169.752562477	1,132.892579125	0.009417000	0.045410999	0.2

0 records selected.

q We have been working with PM programming staff to develop a new version of their Phasor Viewer



q This version will be available within a few weeks and will provide a valuable tool for both troubleshooting tool commissioning metering installations



Questions and Discussion