
Pre-Production Connectivity Testing: Dispatch Service Application Programming Interface (API)

February 28, 2025



Table of Contents

Preface	2
TC01 - Access Dispatch Service Using Web API	3
Additional Resources	9

Preface

This document outlines the test cases to be executed as part of the pre-production connectivity test for applications that are impacted by the Market Renewal Program (MRP). The primary objective of this test is to assess and validate the connectivity of systems whose endpoints are changing in the environment.

Please ensure any anomalies, disruptions, or irregularities discovered while performing the pre-production connectivity test are reported via qTest or the Issue Log Template. This will contribute significantly to the overall improvement of the IESO tools.

Precondition:

1. Production API Credentials (username and password) to access:

<https://webservices-prod.ieso.ca/dispatches/DispatchService?wsdl>

Notes:

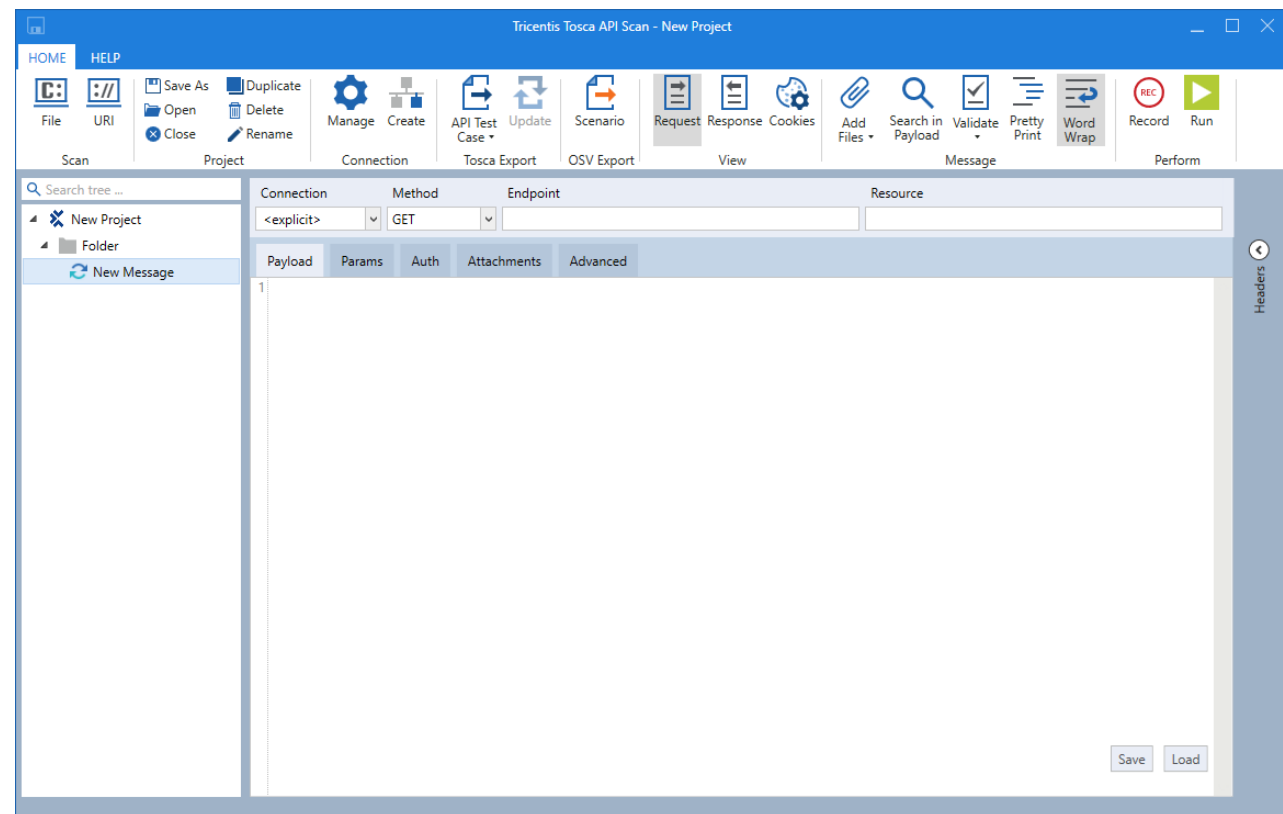
The API tool used to demonstrate the outcomes of the test steps in this document is Tosca's API Scan. Users may choose to test with this tool or any other web service tool of their choice.

TC01 - Access Dispatch Service Using Web API

Step	User Instruction	Expected Result
------	------------------	-----------------

1	Open the API tool of your choice. In this example, instructions for testing are provided using Tosca's API Scan tool.	
---	--	--

		The API application (Tosca's API Scan) is opened.
--	--	--



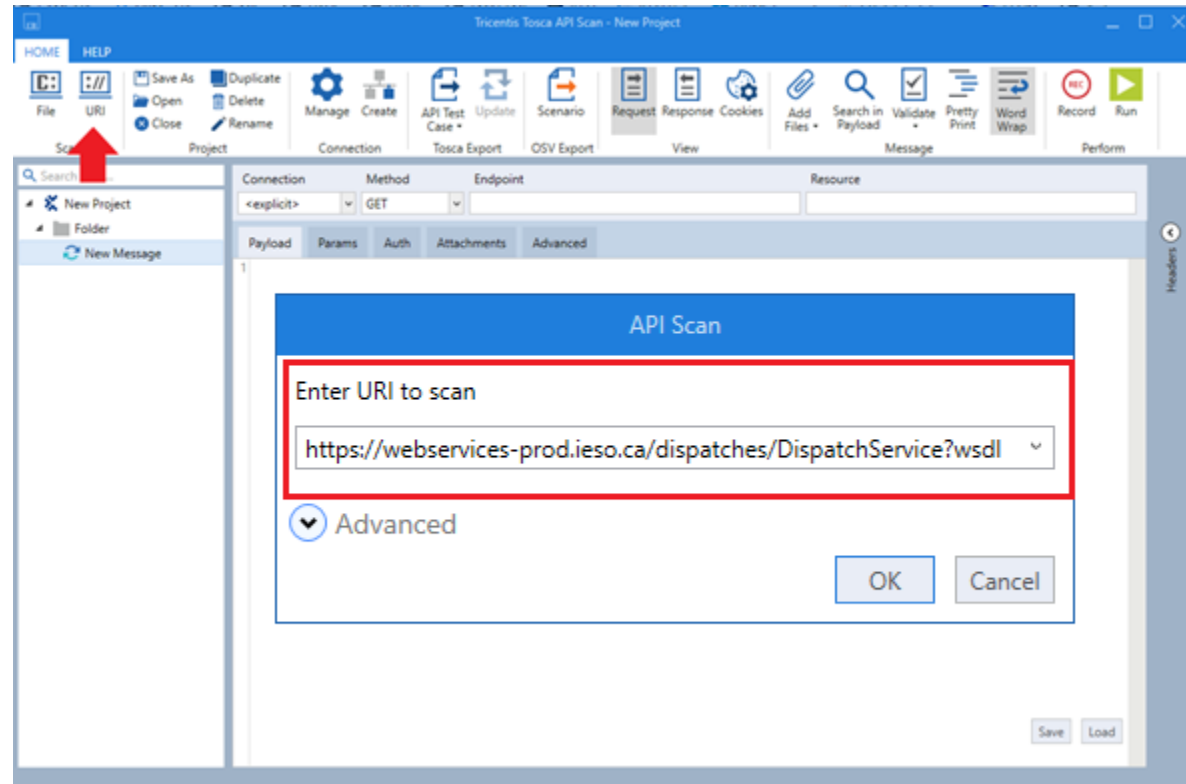
Step User Instruction

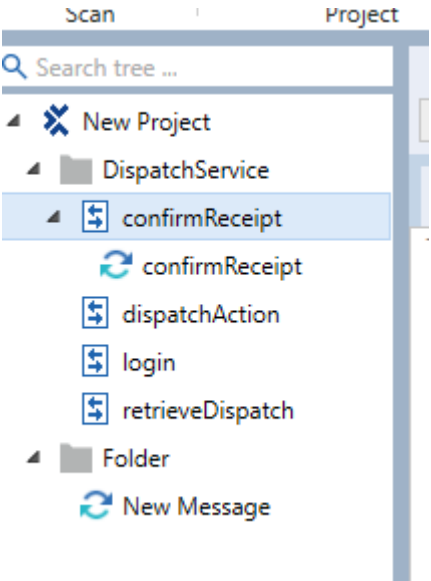
Expected Result

- 2 Click the **URL** icon under the Home menu and enter the Dispatch Service endpoint:

<https://webservices-prod.ieso.ca/dispatches/DispatchService?wsdl>

A small window with space to input the endpoint URL should open.



Step	User Instruction	Expected Result
3	<p>Click OK and confirm the project tree is populated on the left panel:</p> <ul style="list-style-type: none"> • Dispatch Service <ul style="list-style-type: none"> - confirmReceipt - dispatchAction - login - retrieveDispatch • Folder <ul style="list-style-type: none"> - New Message 	<p>The project tree on the left should load the following files.</p> 
4	<p>Expand the project tree and select the login option.</p>	<p>The login request form should open.</p>

Step	User Instruction	Expected Result
5	Update the username and password in the request form.	Form should be updated with the API username and password.

Connection

Method

Endpoint

Resource

<explicit>

POST

https://webservices-sandboxmrp.ieso.ca/dispatches/DispatchService?wsdl

Payload

Params

Auth

Attachments

Advanced

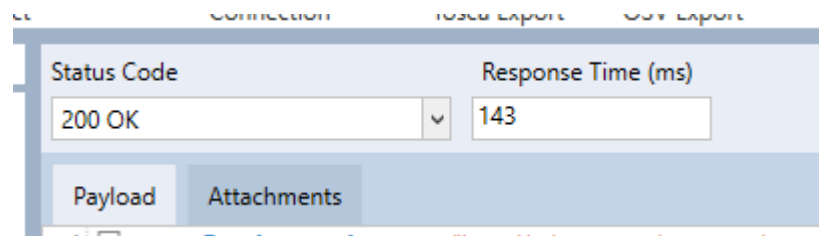
```

1 <?xml version="1.0" encoding="utf-8"?>
2 <s:Envelope xmlns:s="http://schemas.xmlsoap.org/soap/envelope/">
3   <s:Body>
4     <Login xmlns="https://webservices-prod.ieso.ca/dispatches/DispatchService?wsdl">
5       <Username xmlns="">Username1</Username>
6       <Password xmlns="">Password1</Password>
7     </Login>
8   </s:Body>
9 </s:Envelope>

```

- 6 Click **Run** to send the request form.

A Response should be received with Status Code: **200 OK**.



Status Code	Response Time (ms)
200 OK	143

Payload Attachments

The payload should display all the permissions the user has.

Status Code	Response Time (ms)
200 OK	143

Payload	Attachments
<pre>1 <soap:Envelope xmlns:soap="http://schemas.xmlsoap.org/soap/envelope/"> 2 <soap:Body> 3 <ns2:LoginResponse xmlns:ns2="https://webservices-prod.ieso.ca/dispatches/DispatchService?wsdl"> 4 <authToken>[redacted]</authToken> 5 <accessPermissions> 6 <permission> 7 <participantName>[redacted]</participantName> 8 <role>Operator</role> 9 </permission> 10 <permission> 11 <participantName>[redacted]</participantName> 12 <role>Operator</role> 13 </permission> 14 <permission> 15 <participantName>[redacted]</participantName> 16 <role>Operator</role> 17 </permission> 18 <permission> 19 <participantName>[redacted]</participantName> 20 <role>Operator</role> 21 </permission> 22 <permission> 23 <participantName>[redacted]</participantName> 24 <role>Operator</role> 25 </permission> 26 <permission> 27 <participantName>[redacted]</participantName> 28 <role>Operator</role> 29 </permission> 30 </accessPermissions> 31 </ns2:LoginResponse> 32 </soap:Body> 33 </soap:Envelope></pre>	



Additional Resources

- [Dispatch Notification Service Web Service Design Specifications \(SPEC-154, Issue 5.0\)](#)
- [Dispatch Service Web Service Design Specifications \(SPEC-155, Issue 3.0\)](#)

**Independent Electricity
System Operator**

1600-120 Adelaide Street West
Toronto, Ontario M5H 1T1

Phone: 905.403.6900

Toll-free: 1.888.448.7777

E-mail: customer.relations@ieso.ca

ieso.ca



[@IESO Tweets](https://twitter.com/IESO)



[linkedin.com/company/IESO](https://www.linkedin.com/company/IESO)