



PROCEDURE

Market Manual 3: Metering

Part 3.2: Meter Point Registration and Maintenance

Issue 27.0

This document describes the procedures for registering *meter points* and changes to *metering installations* in the IESO marketplace.

Disclaimer

The posting of documents on this Web site is done for the convenience of *market participants* and other interested visitors to the *IESO* Web site. Please be advised that, while the *IESO* attempts to have all posted documents conform to the original, changes can result from the original, including changes resulting from the programs used to format the documents for posting on the Web site as well as from the programs used by the viewer to download and read the documents. The *IESO* makes no representation or warranty, express or implied that the documents on this Web site are exact reproductions of the original documents listed. In addition, the documents and information posted on this Web site are subject to change. The *IESO* may revise, withdraw or make final these materials at any time at its sole discretion without further notice. It is solely your responsibility to ensure that you are using up-to-date documents and information.

This *market manual* may contain a summary of a particular *market rule*. Where provided, the summary has been used because of the length of the *market rule* itself. The reader should be aware; however, that where a *market rule* is applicable, the obligation that needs to be met is as stated in the *market rules*. To the extent of any discrepancy or inconsistency between the provisions of a particular *market rule* and the summary, the provision of the *market rule* shall govern.

Document ID	MDP_PRO_0013
Document Name	Part 3.2: Meter Point Registration and Maintenance
Issue	Issue 27.0
Reason for Issue	Updated for Baseline 41.1
Effective Date	June 5, 2019

Document Change History

Issue	Reason for Issue	Date
1.0	Approved by IMO Board.	April 7, 2000
2.0	Board approved version released for Baseline 3	June 2, 2000
3.0	Unapproved version released for Baseline 5.0	January 5, 2001
4.0	Board Approved version released for Baseline 6.0	February 20, 2001
5.0	Released for Baseline 6.2	May 17, 2001
6.0	Released for Baseline 6.3	July 16, 2001
7.0	Released for Baseline 6.5	October 09, 2001
8.0	Released for Baseline 6.6	November 26, 2001
9.0	Released for Baseline 7.0	January 16, 2002
10.0	Revisions to Baseline 7.0	March 25, 2002
11.0	Revisions for Baseline 9.0	March 05, 2003
12.0	Released for Baseline 9.1	June 4, 2003
13.0	Released for Baseline 10.0	September 10, 2003
14.0	Released for Baseline 11.1	June 2, 2004
15.0	Released for Baseline 12.1	December 8, 2004
16.0	Update to Baseline 12.1	December 10, 2004
17.0	Issue Released for Baseline 14.0	September 14, 2005
18.0	Released for Baseline 15.0	March 8, 2006
19.0	Updated for Baseline 16.0	September 13, 2006
20.0	Updated for Baseline 17.0	March 7, 2007
21.0	Updated for Baseline 21.1	June 3, 2009
22.0	Update for Baseline 22.0	September 9, 2009
23.0	Update for Baseline 23.1	June 2, 2010
24.0	Updated for Baseline 28.0	September 12, 2012
25.0	Updated for Baseline 29.1	June 5, 2013
26.0	Issue Released for Baseline 33.1	June 3, 2015
27.0	Updated for Baseline 41.1	June 5, 2019

Related Documents

Document ID	Document Title
MDP_PRO_0007	Market Manual 3: Metering, Part 3.1: Metering Service Provider (MSP) Registration, Revocation, and De-registration
MDP_PRO_0014	Market Manual 1: Market Entry, Maintenance and Exit, Part 1.1: Participant Authorization, Maintenance and Exit
MDP_PRO_0016	Market Manual 1: Market Entry, Maintenance and Exit, Part 1.2: Facility Registration, Maintenance and De-Registration
MDP_PRO_0017	Market Manual 2: Market Administration, Part 2.1 Dispute Resolution
MDP_STD_0004	Wholesale Revenue Metering Standard - Hardware

Archiving

Table of Contents

Table of Contents	i
List of Figures	iii
List of Tables	iv
Table of Changes	v
Market Manuals	1
Market Procedures	1
1. Introduction	2
1.1 Purpose	2
1.2 Scope	2
1.3 Overview	2
1.4 Task Highlights	3
1.4.1 Preparing and Submitting the Single Line Diagram (SLD)	3
1.4.2 Declaration of Metering Installation Compliance.....	3
1.4.3 Alternative Metering Installation Standards and General Exemptions.....	4
1.4.4 Preparing and Submitting Site-Specific Loss Adjustments and Measurement Error Correction Factors	4
1.4.5 Total Loss Factors (TLF)	4
1.4.6 Emergency Restoration Plan (EITRP)	4
1.4.7 Statement of Metered Market Participant Identification	4
1.4.8 Submitting the MDAS Master File(s) to the IESO	4
1.4.9 Commissioning Test.....	5
1.4.10 Communication Test	5
1.4.11 End-to-End Test.....	5
1.4.12 The Metering Registration (MR) Hotline	5
1.4.13 Registration of Small or Minor Embedded Generation Facilities	6
1.4.14 Temporary Withdrawal of Electricity without a Registered Wholesale Meter.....	6
1.5 Changes to a Metering Installation.....	7
1.6 Additional Registration Requirements.....	7
1.6.1 Requirements for Alternative Meter Use.....	7
1.6.2 Requirements for Passwords	8
1.7 Retaining Registration under the Alternative Metering Installation Standard.....	8
1.8 Contact Information	8

1.9	IT Applications that Support this Procedure.....	8
1.9.1	Metering Installation Registration Tool (MIRT)	8
1.9.2	MDAS	9
1.9.3	MDMS and MDM Meter Data Reports.....	9
1.9.4	CDMS	9
1.10	Roles and Responsibilities	9
2.	Procedural Work Flow.....	11
2.1	Registration of a Meter Point	12
2.2	Registration of Changes to MDAS Master File	15
2.3	Change of Metering Service Provider (for a Meter Point) Not Assigned to a Delivery Point	20
2.4	De-registration of one or more Meter Points associated with a Delivery Point.....	21
Appendix A: Forms		A-1
Appendix B: Requirements for Commissioning a Metering Installation		B-1
Appendix C: Conducting End-to-End Testing & Engineering Unit Report.....		C-1
Appendix D: Emergency Restoration Plan for Instrument Transformers		D-1
Appendix E: Applying to Retain Registration under the Alternative Metering Installation Standard		E-1
References.....		1

List of Figures

Figure 2–1: Work flow for Registration of a Meter Point.....	12
Figure 2–2: Work flow for Registration of Changes to MDAS Master File that Affect Metering Data	15
Figure 2–5: Work flow for Change of Metering Service Provider (for a Meter Point) Not Assigned to a Delivery Point	20
Figure 2–6: Work flow for De-registration of one or more Meter Points associated with a Delivery Point.....	21
Figure D–1: Three CTs and Three VTs in a Metering Installation (Single Circuit)	D–5
Figure D–2: Six CTs and Three VTs in a Metering Installation for Two Equally-Loaded, Equivalent Transformers T_1 and T_2 , Connected to a Common Load Bus	D–6
Figure D–3: Six CTs and Six VTs in a Metering Installation for One of Two Equally-Loaded, Equivalent Transformers T_1 and T_2 , Connected to a Common Load Bus.....	D–8
Figure E–1: MV Bus Metering Installation Registered under the Alternative Metering Installation Standard	E–5
Figure E–2: HV Metering Installation Registered under Section 4.1 of Chapter 6 of the Market Rules.....	E–6
Figure E–3: MV Bus Metering Installation Registered under Section 4.1 of Chapter 6 of the Market Rules	E–7
Figure E–4: MV Feeder Metering Installations Registered under Section 4.1 of Chapter 6 of the Market Rules	E–8
Figure E–5: MV Bus Metering Installation Registered under Section 4.4 of Chapter 6 of the Market Rules	E–9

List of Tables

Table 1-1: Which Sub-Procedure Should You Do?3
Table 2-1: Legend for Work Flow Diagrams 11
Table B-1: Requirements for Commissioning Report..... B-3
Table E-1: Class C (Indicative) Cost Estimate Summary..... E-3

Archive

Table of Changes

Reference	Description of Change
Appendix A	Removed the following forms: IMO_FORM_1299: Assigning an Registered Market Participant and Metered Market Participant for an Energy Market Resource IMO_FORM_1300: Assigning a Metering Service Provider, a Meter Data Associate and a Distributor for an Energy Market Delivery Point IMO_FORM_1304: Assigning a Metering Service Provider, a Meter Data Associate and a Transmitter for a Transmission Tariff Delivery Point
Appendix B	Fixed formatting and spelling errors.

Market Manuals

The *market manuals* consolidate market procedures and associated forms, standards, and policies that define certain elements relating to the operation of the *IESO-administered markets*. Market procedures provide more detailed descriptions of the requirements for various activities than is specified in the *market rules*. Where there is a discrepancy between the requirements in a document within a *market manual* and the *market rules*, the *market rules* must prevail. Standards and policies appended to, or referenced in, these procedures provide a supporting framework.

Market Procedures

The “Metering Manual” is Volume 3 of the *market manual*, and this document is “Part 3.2: Meter Point Registration and Maintenance”.

A list of the other component parts of the “Metering Manual” is provided in “Part 3.0: Metering Overview”, in Section 2, “About This Manual”.

Structure of Market Procedures

Each market procedure is composed of the following sections:

1. **“Introduction”**, which contains general information about the procedure, including an overview, a description of the purpose and scope of the procedure, and information about roles and responsibilities of the parties involved in the procedure.
2. **“Procedural Work Flow”**, which contains a graphical representation of the steps and flow of information within the procedure.
3. **“Procedural Steps”**, which contains a table that describes each step and provides other detail related to each step.
4. **“Appendices”**, which may include such items as forms, standards, policies, and agreements.

Conventions

The *market manual* standard conventions are as defined in the “Market Manual Overview” document.

– End of Section –

1. Introduction

1.1 Purpose

This procedure describes the process of *meter point* registration, which is one part of the registration process for a *metering installation* in the *IESO* marketplace. This procedure also describes the registration of changes that can occur to a *metering installation*.

1.2 Scope

This procedure covers the steps for *meter point* registration and changes to registration for a *metering installation*, but other procedures in “Market Manual 3” may need to be performed before, after, or in parallel with steps in this procedure, namely:

1. “Part 3.8: Creating and Maintaining Delivery Point Relationships” describes how the *IESO* creates *delivery points* for both *energy market* and *transmission tariff* customers. *Delivery points* must be set up by the *IESO* before *meter point* registration can begin. Additional details regarding the creation of *delivery points* for the *energy market* are given in *IESO’s* “Market Manual 1: Market Entry, Maintenance and Exit, Part 1.2: Facility Registration, Maintenance and De-registration”.
2. “Part 3.7: Totalization Table Registration”, where totalization tables associated with a *delivery point* are registered with the *IESO* in order to allow *settlement* for the *energy market* and/or calculation of *transmission tariffs*.

Links to these two procedures appear, where relevant, in the workflow diagrams of this procedure.

1.3 Overview

The *market rules* require *market participants* to register their *metering installations* with the *IESO* in order to participate in the wholesale electricity market. The process of registering a *meter point* can occur in parallel with other registration procedures, as described in Section 1.2. The process of *meter point* registration results in a *meter point* ID being assigned to the *metering installation*.

The *IESO* can refuse registration of *meter points* that it deems unsuitable for registration.

Table 1-1, below, describes which sub-procedures to follow for specific tasks. The sub-procedures are illustrated in the procedural workflows (PWF) presented in Section 2, and explained in more detail in Section 3.

Table 1-1: Which Sub-Procedure Should You Do?

To do this task....	Perform this Sub-Procedure...	Described in this Section and Work Flow...
Register a <i>meter point</i> .	Registration of a <i>meter point</i>	2.1 / B
Register a change due to an <i>emergency</i> or malfunction impacting <i>metering data</i> (new <i>meter</i> , new IT ratios, new channel destinations)	Registration of changes to MDAS Master File that affect <i>metering data</i>	2.2 / C
Change the <i>metering service provider</i> responsible for a <i>metering installation</i> .	Change of <i>metering service provider</i> for a <i>meter point ID</i>	2.5 / F
Permanently <i>disconnect</i> a <i>metering installation</i> at a specific <i>meter point</i> or de-register a <i>facility</i> .	De-registration of one or more <i>meter point</i> Ids	2.6 / G

1.4 Task Highlights

This section describes important tasks performed in some, or all, of the sub-procedures covered by this document. See Sections 2 and 3 of this document for a more detailed description of the tasks.

1.4.1 Preparing and Submitting the Single Line Diagram (SLD)

To document the location of the components of the *metering installation* in relation to the electrical transmission/distribution network, the *metering service provider* submits to the *IESO* a Single Line Diagram (SLD) of the *metering installation*. This SLD must be prepared in accordance with the provisions of Sections 1.5, 1.6 and Appendix B of “Part 3.6: Conceptual Drawing Review”, and submitted in Online *IESO* (<https://online.ieso.ca>). If *transmission tariffs* exist at the *delivery point* associated with the *meter point*, the *metering service provider* must make a copy of the SLD and submit it to its *transmitter* for review, before submitting this copy to the *IESO*.

The *IESO* reviews the SLD that will become part of the official *meter point* documentation. The *IESO* must be satisfied with the SLD in order for registration to proceed.

1.4.2 Declaration of Metering Installation Compliance

Following the *IESO*'s successful review of the SLD submitted, the *metering service provider* must assess whether the *metering installation* is compliant or not with Chapter 6 of the *market rules* and the standards and policies of the *IESO* regarding metering. If the *metering service provider* believes the *metering installation* is compliant, the *metering service provider* must inform the *IESO* accordingly, by sending a signed “Metering Service Provider Declaration of Metering Installation Compliance”. Otherwise, the *metering service provider* must perform the Alternative Standard/*Exemption* procedure, as described in the next section.

1.4.3 Alternative Metering Installation Standards and General Exemptions

This sub-process is specific to the registration of *meter point* associated with *metering installations* that do not fully comply with Chapter 6 of the *market rules* and the standards and policies of the *IESO* regarding metering. The process is described in detail in Appendix E.

1.4.4 Preparing and Submitting Site-Specific Loss Adjustments and Measurement Error Correction Factors

The *metering service provider* must have a registered Professional Engineer, recognized as such by the Professional Engineers Ontario, prepare, sign and stamp a Site-Specific Loss Adjustments Register and a Measurement Error Correction Register for the Metering Installation submitted for registration. These Registers are then submitted to the *IESO*. *Metering service providers* must refer to “Part 3.4: Measurement Error Correction” and “Part 3.5: Site-Specific Loss Adjustments” for further information about how to perform these calculations and to complete the Registers, as well as to the “Site-Specific Loss Adjustments Standard”.

1.4.5 Total Loss Factors (TLF)

Total Loss Factors (TLF) take into account distribution losses up to the *Defined Meter Point*. TLFs, as approved by the *Ontario Energy Board* and communicated by the relevant LDC, must also be submitted by the *metering service provider*, when appropriate.

1.4.6 Emergency Restoration Plan (EITRP)

The “Emergency Instrument Transformer Restoration Plan” (EITRP) is a document that describes the actions that the *metering service provider* must take in case of failure of the *instrument transformers* and *meters* that are part of a *metering installation*. The EITRP, which is described in Appendix D, must also be submitted by the *metering service provider*, whenever relevant to the specific process.

1.4.7 Statement of Metered Market Participant Identification

During the registration process for a *metering installation*, or at any time after a *metering installation* has been registered, the *metered market participant* must inform the *IESO* that more than one *metering service provider* is being registered for the *metering installation*. When this condition occurs, the *metered market participant* must complete “Assigning a Metering Service Provider to a Meter Point” (IMO-FORM-1390) and send it to the *IESO*. If IMO-FORM-1390 is not completed, the *IESO* deems the assigned *metering service provider* at the *delivery point* to be the *metering service provider* for the *metering installation*.

Note: Only the *metering service provider* assigned to the *delivery point* submits totalization table information to the *IESO*.

1.4.8 Submitting the MDAS Master File(s) to the IESO

As part of the registration process for a *meter point ID*, the *metering service provider* must communicate to the *IESO* specific configuration information for the *meter* at that *meter point ID*. This information must be submitted in the form of a MDAS Master File. The *metering service provider* must create the file and upload it to Online IESO.

The *IESO* reviews the submitted MDAS Master File for completeness. Where the MDAS Master File submitted by the *metering service provider* is either incomplete or incorrect, the *IESO* notifies the *metering service provider* accordingly and asks for the MDAS Master file to be resubmitted. The registration process will not proceed until a satisfactory MDAS Master File is received by the *IESO*.

In the case of registering a *meter point* ID for which the *metering installation* is currently interrogated by the *IESO*, the *IESO* will also compare the new MDAS Master File with the one currently residing in the MDAS Production module. See Section 1.4.12 for more details.

1.4.9 Commissioning Test

The *metering service provider* must perform a commissioning test of the *metering installation* during *meter point* registration. Following the successful completion of the test, the *metering service provider* must submit a commissioning report package to the *IESO*. Refer to Appendix B for the requirements for commissioning a metering installation.

1.4.10 Communication Test

The communication test of a *metering installation* is performed during changes to an MDAS Master File that do not affect the *metering data*. This test ensures that the communication channel is still functional, once the change to the MDAS Master File has been implemented.

1.4.11 End-to-End Test

The end-to-end test of a *metering installation* is another mandatory step in registering a *meter point*. The test ensures that the correct MDAS Master File(s) for the *metering installation* is being used by the *IESO*; the *metering installation* can be successfully interrogated; and the *metering data* thus obtained is accurate; and ensures that the *IESO* can synchronize the time clock within the *meter*. A “Confirmation of Engineering Units Report” is produced by the *IESO* and sent to the *metering service provider* for confirmation. The *metering service provider* reviews and approves the relevant report verifying that the information is correct within 2 *business days*. Guidelines for conducting the end-to-end test and Confirmation of Engineering Report of a *metering installation* appear in Appendix C.

1.4.12 The Metering Registration (MR) Hotline

Metering service providers require authorization from the *IESO* on every occasion when they need to perform work that may:

- a. Affect the quality of currently metered data from a metering installation, or
- b. Introduce changes to current Meter Point Registration information about these *metering installations*.

The Metering Installation Department of the *IESO* operates the Metering Registration (MR) Hotline as part of the Meter Point Registration process. The MR Hotline offers weekday service (normally 7:30 a.m. to 4 p.m.) to *metering service providers* who need to schedule various types of work with the *IESO*, or report *emergency* repairs made in response to a Meter Trouble Report for *metering installations*. Registration requests are submitted in Online IESO (<https://online.ieso.ca>). The various scopes of work for the MR Hotline are as follows:

- ‘New Connections’ of *metering installations* to be registered for the market.
- Scheduled maintenance on an existing *metering installation* to replace a *meter* with a similar or identical *meter* that has the same programming configuration (‘Scheduled Maintenance - Like for Like’).

- Scheduled maintenance on an existing *metering installation* to replace a *meter* with a non-similar or non-identical *meter*, that does not have the same programming configuration, de-register the existing *meter* and re-register the *metering installation* ('Scheduled Maintenance - Critical Change').
- Report *emergency* work already performed on an existing *metering installation* in the past 24 hours, to replace an existing *meter* with a similar or identical *meter* that has the same programming configuration, de-register the defective *meter*, and re-register the *metering installation* ('Emergency - Like for Like').
- Report *emergency* work already performed on an existing *metering installation* in the past 24 hours, to replace a *meter* with a non-similar or non-identical *meter* that does not have the same programming configuration, de-register the existing defective *meter*, and re-register the *metering installation* ('Emergency - Critical Change').
- Changes to a *meter's* MDAS Master File, including de-registration of individual channels of non-compliant *meters* that do not require the re-registration of the *metering installation* ('MIRT Update only').
- Updates to an existing Totalization Table for a *metering installation* ('Totalization Table').

The MR Hotline telephone number is (905) 855-6490 and the FAX number is (905) 855-8688.

1.4.13 Registration of Small or Minor Embedded Generation Facilities

Revenue *metering installations* for small or minor embedded *generation facilities* of less than 2 MVA nameplate rating and injecting less than 17 gigaWatt-hours per annum into the *IESO-controlled grid*, shall comply with the registration processes as detailed in this *Market Manual* but with the following modifications and clarifications: (i) An Emergency Instrument Transformer Restoration Plan (EITRP) shall not be required. Where this manual requires the submission of an EITRP, it shall not apply. The *IESO* will register the *metering installation* without an EITRP. (ii) Correction factors will be applied on the failure of an IT, according to Appendix D, Section 5 of this *market manual*, provided the *IESO* can continue to communicate with the *meter*. However, *metering service provider* - or *metered market participant*-supplied estimated data will not be used under any circumstances.

- Embedded generation may or may not attract transmission service as per the Ontario Energy Board Transmission Rate Schedule. Where the embedded *generation facility* does not attract network, line or transformation connection service charges and does not have transmission *delivery points*, the registration of the *facility* does not need the notification of, or the approval of, the *transmitter*.
- Channels 3 and 4 (received channels) shall be adjusted using a default load factor (LF) of 1.0 unless all the parties agree to a different value. The *metering service provider* shall ensure that the parties are in agreement with the proposed LF prior to submission to the *IESO*. See "Market Manual 3: Metering, Part 3.7: Totalization Table Registration", Appendix D for additional information on *settlement* of embedded generators.

1.4.14 Temporary Withdrawal of Electricity without a Registered Wholesale Meter

Subject to Section 2.1.5 of Chapter 6 of the *market rules* the *IESO* may permit a *metered market participant* to connect equipment to the *IESO-controlled grid* without a *registered wholesale meter*

under certain conditions. The request shall come from the *metered market participant* when an unforeseeable or unavoidable situation prevents them from registering the *registered wholesale meters* prior to the connection date. This process does not qualify for poor planning or changing a commissioning sequence. The conditions for granting connection without a *registered wholesale meter* include, but are not limited to:

- The temporary withdrawal of electricity from the *IESO-controlled grid* will be strictly for connecting equipment for commissioning purposes and not for load (e.g. soaking a power transformer for the purpose of commissioning);
- The *metered market participant* will submit factory test cards of the power transformer they wish to connect;
- Wholesale *revenue meters* will be in service and registered within 48 hours of connecting; and
- Once connected, if the *metered market participant* cannot fulfill the conditions outlined above (e.g. the *registered wholesale meters* are not registered within 48 hours and/or draws load without *registered wholesale meters*), the *metered market participant* and the *IESO* will refer the matter to the *Market Assessment and Compliance Division*.

The approval for such a request is at the sole discretion of the *IESO*.

1.5 Changes to a Metering Installation

This document also describes processes for changes that can be applied to, or in relation to, a *metering installation* up to, and including, de-registration. The processes associated with such changes are as follows:

- Registration of changes to MDAS Master File that affect *metering data*;
- Registration of changes to MDAS Master File that do not affect *metering data*;
- Registration of changes that do not affect MDAS Master File;
- Change of *metering service provider* for a *meter point ID*; and
- De-registration of one or more *meter points* IDs.

A list of all these processes, together with the associated workflows and triggers, is presented in Table 1-1 in Section 1.3.

1.6 Additional Registration Requirements

1.6.1 Requirements for Alternative Meter Use

Metered market participants who intend to use *IESO-registered meters* for purposes in addition to *IESO* transactions must ensure that the selected *meter* has been accepted by the *IESO* for simultaneous communication functions. *Meters* that meet *IESO* requirements for this functionality are identified on the “Conforming Meter List”. Only these *meters* can be used by *market participants* for alternative *meter* use in the *IESO-administered markets*.

1.6.2 Requirements for Passwords

Metered market participants must ensure that *security* controls for passwords in *meters* registered, or being registered, with the *IESO* meet the requirements set out in Chapter 6, Section 9.2 of the *market rules*. However, only the *metering service provider* and the *IESO* shall have the “read plus synchronize time” and “read plus write” passwords. If password requirements are not met, access to *metering data* will be allowed only from the *metering database* and only by the *metered market participant*; *metering service provider*; connected *transmitter* or *distributor*; authorized agents of the *metered market participants*; and the *IESO*.

1.7 Retaining Registration under the Alternative Metering Installation Standard

Metering installations registered under the alternative metering installation standard can remain registered until such time as a substantial upgrade or refurbishment is performed. At this time, the registration expires and the *metering installation* has to be upgraded to be fully compliant with Section 4.1 of Chapter 6 of the *market rules*.

There are some installations however, where an upgrade to full compliance requires rebuilding of major components of a *facility* or power system and is impractical. Under these circumstances the *metered market participant* may apply to retain registration under Section 4.4.8 of Chapter 6 of the *market rules*. The right to retain registration granted by the *IESO* under these conditions would permit qualifying *metered market participants* to retain registration of certain components of the *metering installation* under the alternative metering installation standard.

Refer to Appendix E for a detailed description, conditions, cases and the application process for retaining registration under the alternative metering installation standard.

1.8 Contact Information

If the *market participant* wishes to contact the *IESO*, the *market participant* can contact the *IESO* Customer Relations via email at customer.relations@ieso.ca or via telephone, mail or courier to the numbers and addresses given on the *IESO*'s Web site (www.ieso.ca). If the *IESO* Customer Relations is closed, telephone messages or emails may be left in relevant voice or electronic *IESO* mail boxes, which will be answered as soon as possible by Customer Relations staff.

Standard forms that participants must complete for this procedure are listed in Appendix A. These forms are generally available for downloading on the *IESO* Web site.

Meter Installations must be registered via Online IESO (<https://online.ieso.ca>).

1.9 IT Applications that Support this Procedure

The process of registration of a *metering installation* is supported by a number of applications as described below:

1.9.1 Metering Installation Registration Tool (MIRT)

This tool enables the *metering service provider* to provide the *IESO*, via Online IESO, with an MDAS Master File. *Metering service providers* can create the MDAS Master File in MIRT, or import the Master File into MIRT from MDAS, complete it, and then upload it to Online IESO.

1.9.2 MDAS

MDAS is used during the registration process of a *meter point* ID. MDAS imports the MIRT Master File provided by the *metering service provider*. MDAS performs the end-to-end test during the registration process, by interrogating the *meters* pertaining to the installation being registered.

MDAS is employed by *IESO* in order to collect daily *metering interval* data that is then transmitted to MDMS. In addition, MDAS will provide the information required to produce communication meter trouble reports.

1.9.3 MDMS and MDM Meter Data Reports

MDMS receives *metering data* collected by MDAS and generates totalization tables. MDM Meter Data Reports is the tool *market participants* can use to view and download market transactions.

1.9.4 CDMS

The Customer Data Management System (CDMS) is designed to meet the business requirements for the following business groups: System Capability, Market Entry and Metering Installation. The CDMS system is used by the three groups for the creation and maintenance of facility technical data:

- Registration of *market participants* and other organization types
- Registration of facilities and resources
- Registration of *metering installations*

The CDMS system maintains relationships between *metered market participants* (MMP), *metering service providers* (MSP), *transmitters* and/or *distributors*, and a *delivery point* (resource).

Also, the CDMS system maintains profiles, permissions, privileges and accounts for MSP's, and MMP's. Once created and validated in CDMS, *metering*-relevant information, such as the *delivery point* relationships, is replicated to other *IESO* systems, such as Online *IESO*, MDMS and MTR system.

1.10 Roles and Responsibilities

The following section describes the roles and responsibilities of the *IESO*, *metering service provider*, and *metered market participants* during the *meter point* registration sub-procedure (Sections 2.1 and 3.1). Some of these responsibilities may not exist for other sub-procedures in this document.

The *IESO* is responsible for:

- Reviewing the SLD submitted by the *metering service provider*;
- Assigning *meter point* ID(s) and other IDs, as applicable, for the *metering installation*;
- Conducting the end-to-end test and preparing the “Engineering Units Report”;
- Sending the Engineering Units Report to the *metering service provider* for verification and approval; and
- Informing the relevant *metered market participant* / *metering service provider* of the successful or unsuccessful registration.

Metering service providers are responsible for:

- Submitting the SLD to the *IESO* for review;
- Submitting a copy of the SLD to the *transmitter* for review where *transmission tariffs* exist at the associated *delivery point*;
- Submitting the *transmitter*-reviewed SLD to the *IESO*;
- Formally notifying the *IESO* that the *metering installation* is compliant, as described above, or, alternately, applying for an *exemption*;
- Submitting Site-Specific Loss Adjustments (SSLA), Measurement Error Correction (MEC) factors, “Emergency Restoration Plan” and, if required, Total Loss Factors (TLF) to the *IESO*. The SSLA Register and the MEC Register must be certified by a registered professional engineer;
- Completing the “Assigning a Metering Service Provider to a Meter Point” (IMO-Form-1390), as applicable;
- Using one of the three methods described in Section 1.9.2 to create the MDAS Master File for the relevant *meter point* ID and submitting the information to the *IESO*;
- Initiating the end-to-end test, by calling the *IESO* and providing the information required, and participating in the completion of the test;
- Performing the commissioning test and recording the results;
- Approving the *IESO*-completed “Engineering Units Report” for each *meter point* ID upon verifying that the information in the Report is correct and accurate;
- Following the procedure for changes to MDAS Master File that do not affect *metering data* for a *meter point* ID when *metered market participant* or *metering service provider* changes occurred at *delivery point* level; and
- Providing, upon request from its *metered market participant*, any relevant information regarding the *metering installation*; and
- Providing the *transmitter* with the *meter point* documentation on completion of the registration procedure or changes to registration procedure.

Metered market participants are responsible for:

- Providing the *Delivery Point* Name and ID to their *metering service provider*, as received from the *IESO* during *facility* registration;
- Ensuring that their contracts relating to each *metering installation* in respect of which it is the *metered market participant* contain such terms and conditions related to the *metering installation* as may be required for compliance with the *market rules*;
- Initiating the procedure of changing a *metering service provider* for a *meter point*; and
- Ensuring a proper transfer of documentation between an outgoing and a newly-appointed *metering service provider* for a *meter point* in respect of which it is the *metered market participant*.

– End of Section –

2. Procedural Work Flow

The following diagrams represent the flow of work and information related to *meter point* registration among the *IESO*, the *metering service provider*, and any other parties.

Table 2–1: Legend for Work Flow Diagrams

Legend	Description
Oval	An event that triggers task or that completes task. Trigger events and completion events are numbered sequentially within procedure (01 to 99)
Task Box	Shows reference number, party responsible for performing task (if “other party”), and task name or brief summary of task. Reference number (e.g., 1A.02) indicates procedure number within current <i>market manual</i> (1), sub-procedure identifier (if applicable) (A), and task number (02)
Solid horizontal line	Shows information flow between the <i>IESO</i> and external parties
Solid vertical line	Shows linkage between tasks
Broken line	Links trigger events and completion events to preceding or succeeding task

Links labelled MIR-xx represent letters that the *IESO* sends to the participants at various steps.

2.1 Registration of a Meter Point

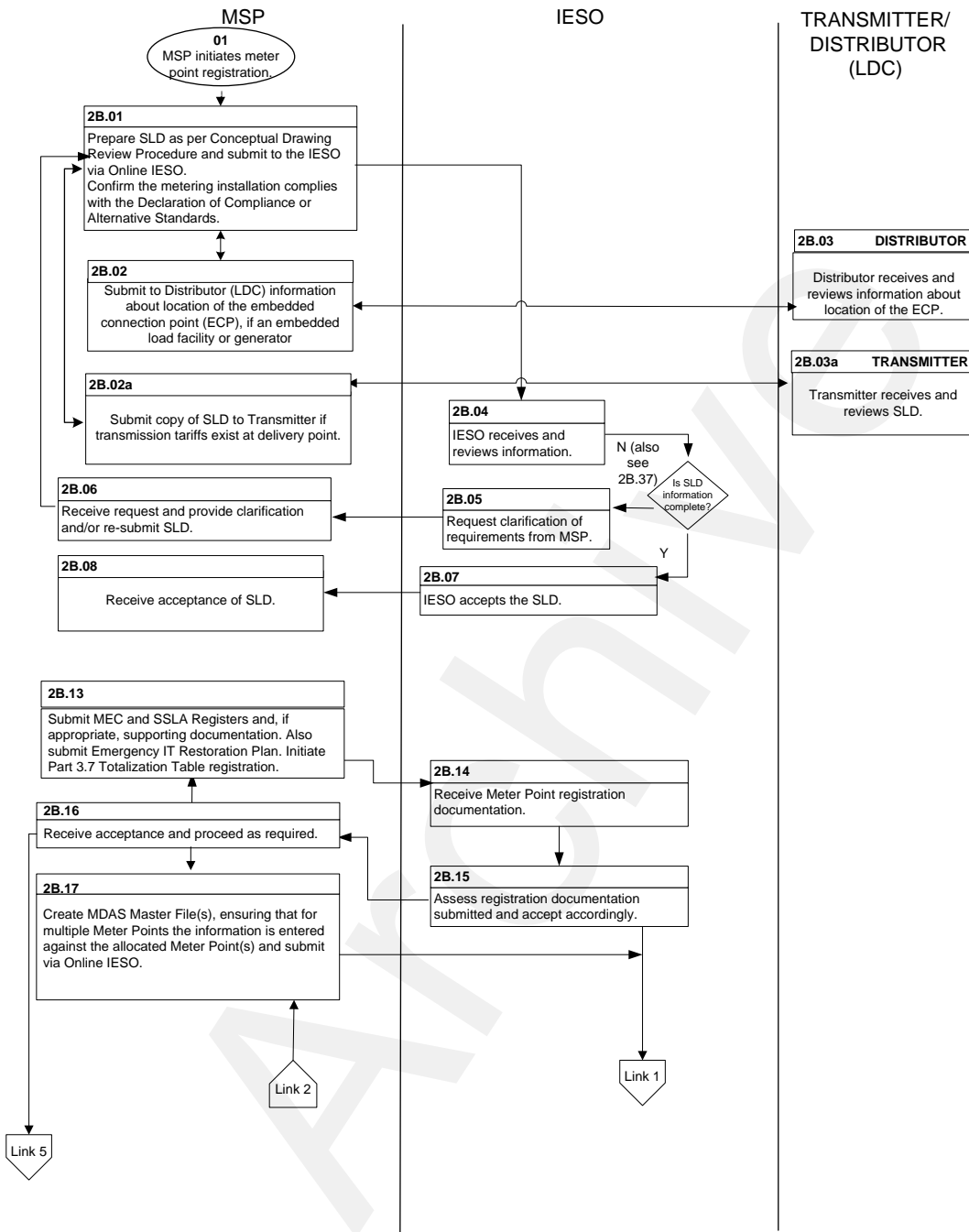


Figure 2–1: Work flow for Registration of a Meter Point

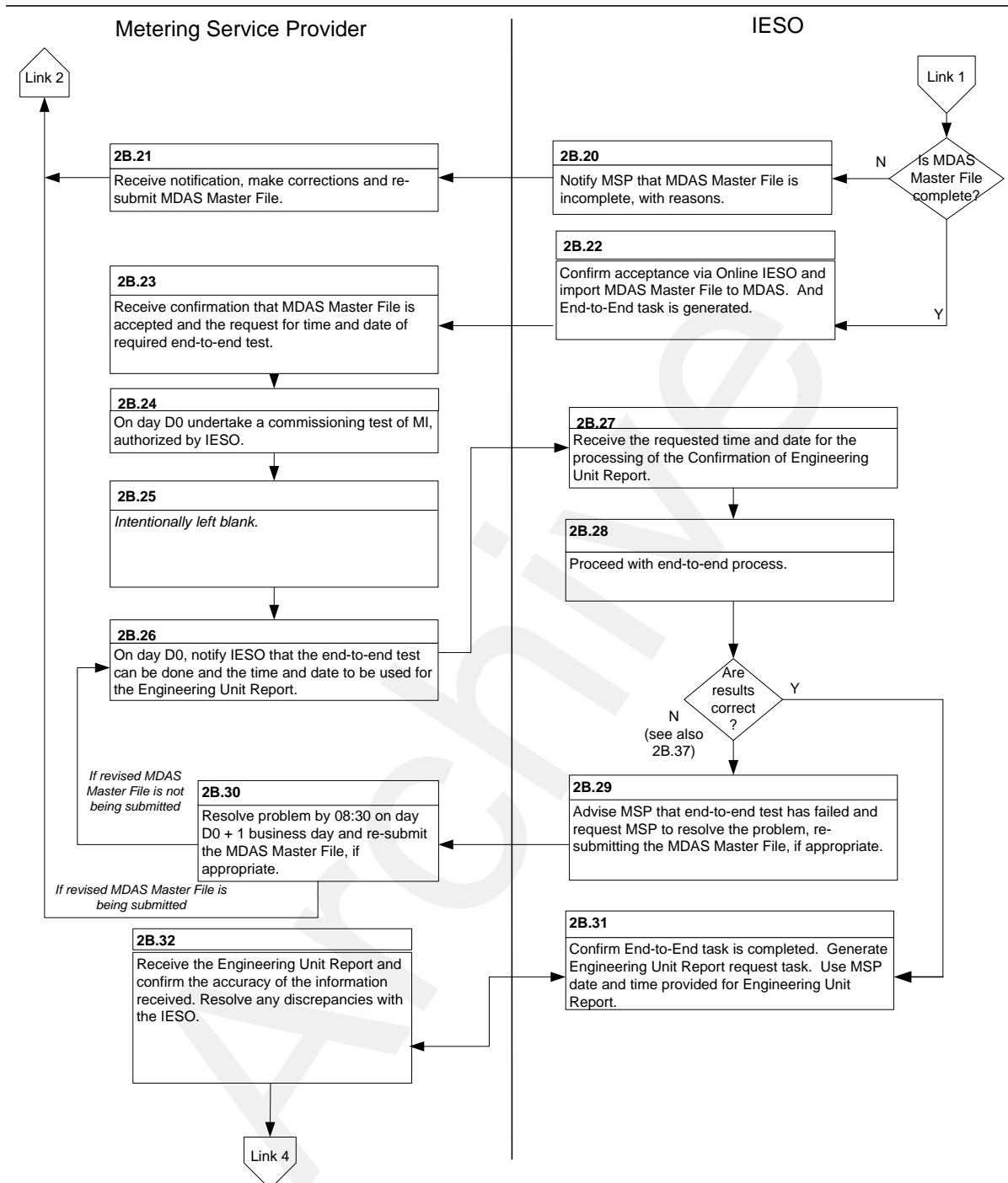


Figure 2-1: Work flow for Registration of a Meter Point (continued)

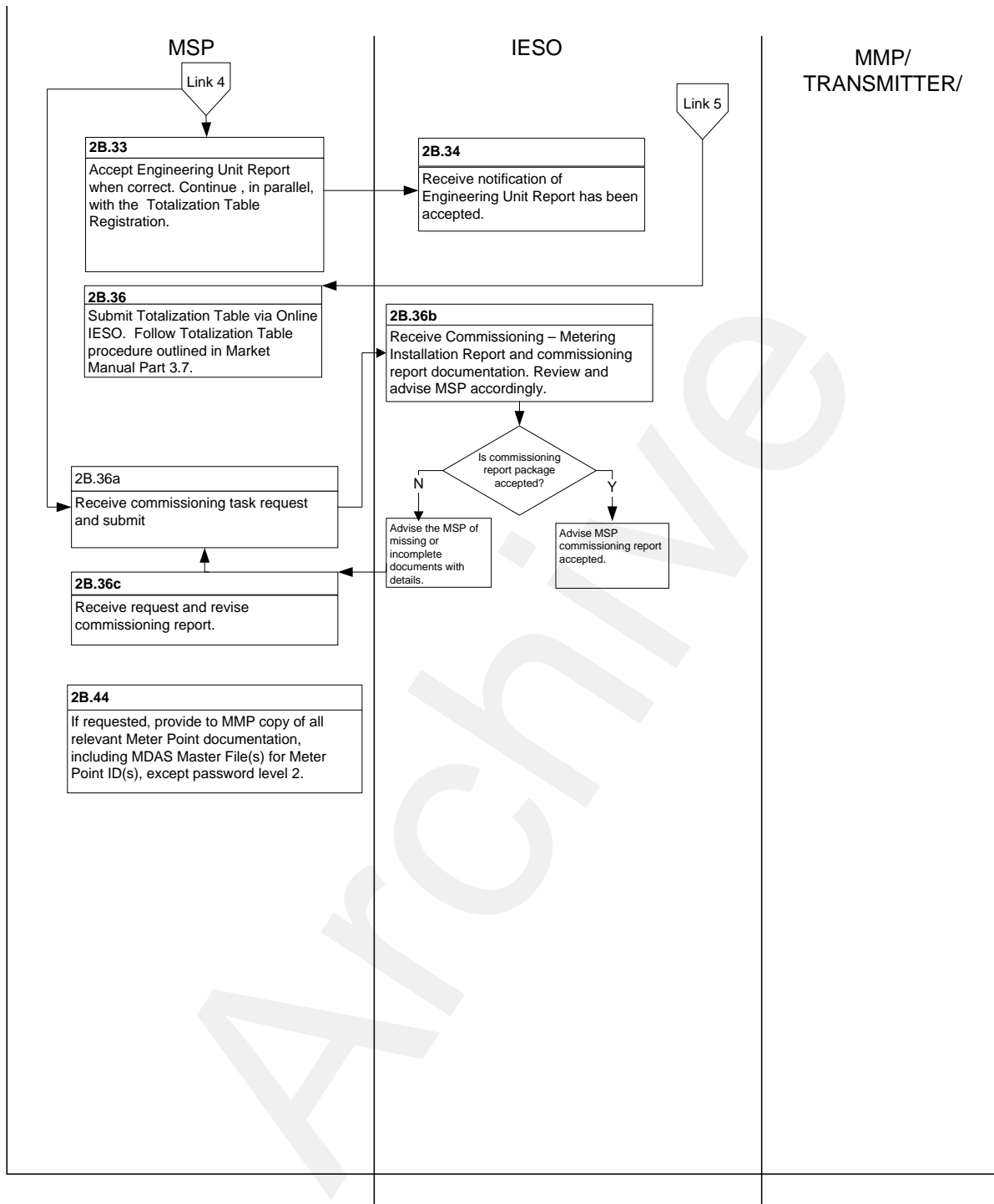


Figure 2-1: Work flow for Registration of a Meter Point (continued)

2.2 Registration of Changes to MDAS Master File

Metering Service Provider

IESO

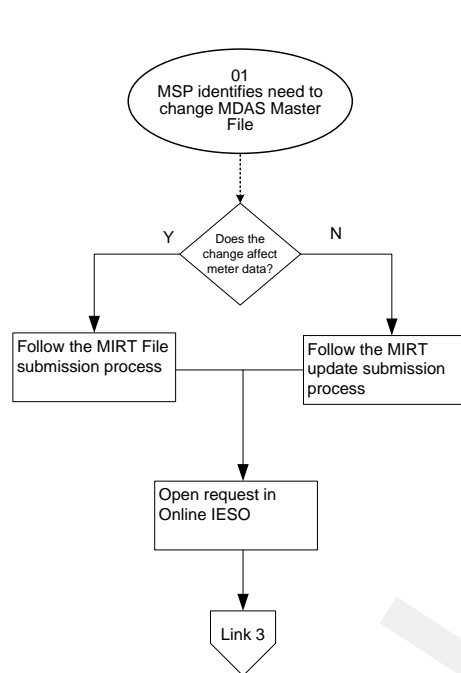


Figure 2–2: Work flow for Registration of Changes to MDAS Master File that Affect Metering Data

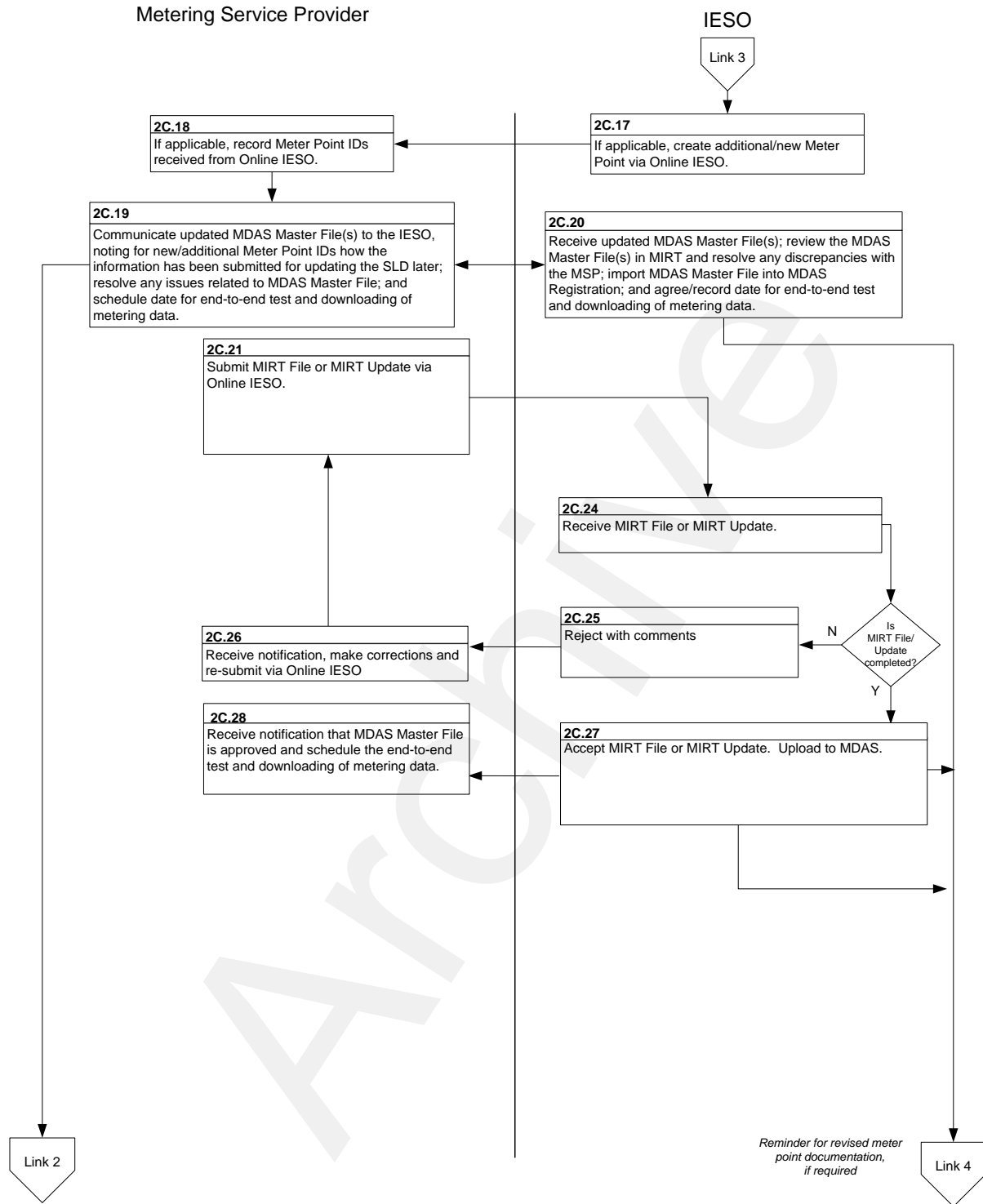


Figure 2–2: Work flow for Registration of Changes to MDAS Master File that Affect Metering Data (continued)

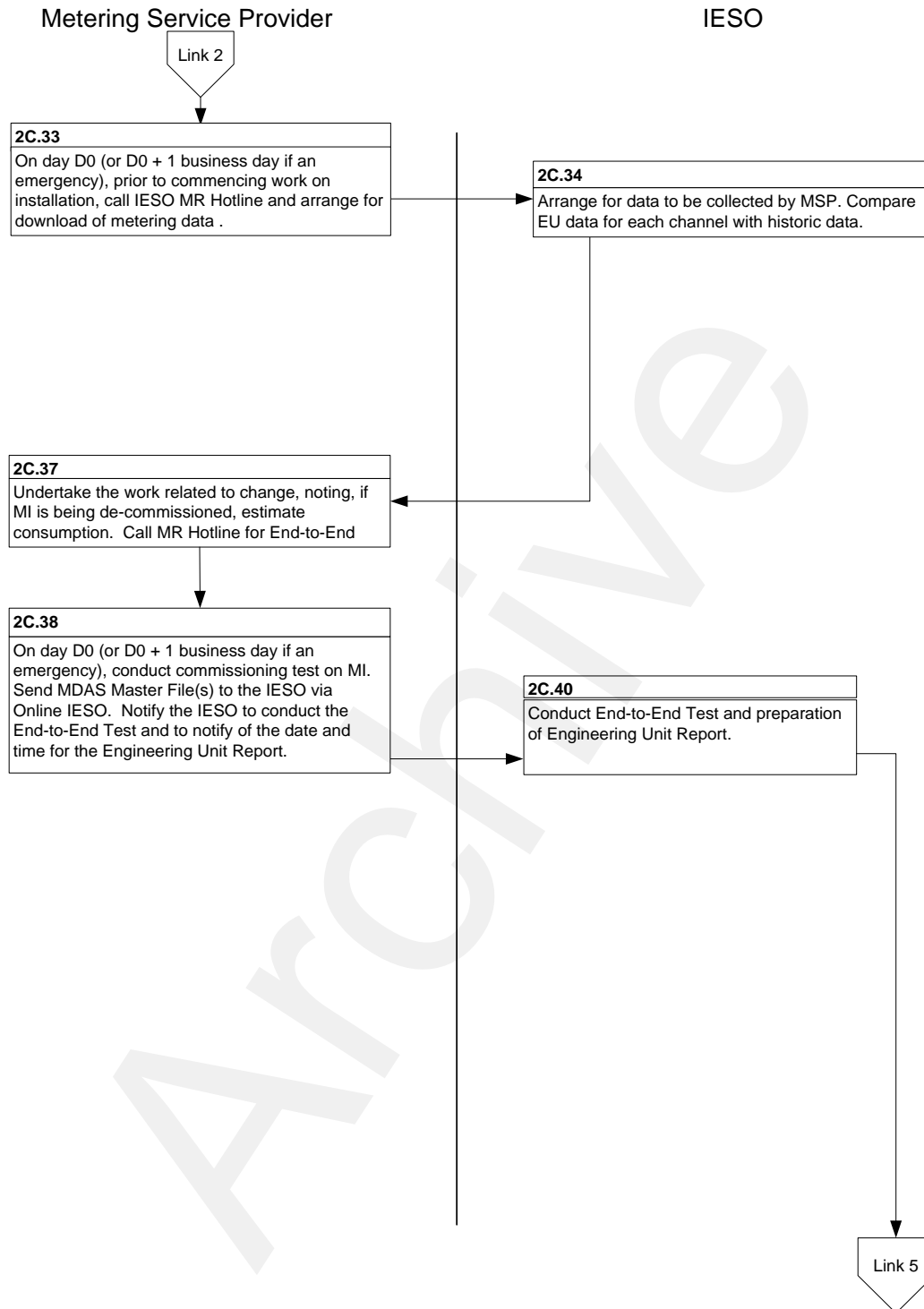


Figure 2–2: Work flow for Registration of Changes to MDAS Master File that Affect Metering Data (continued)

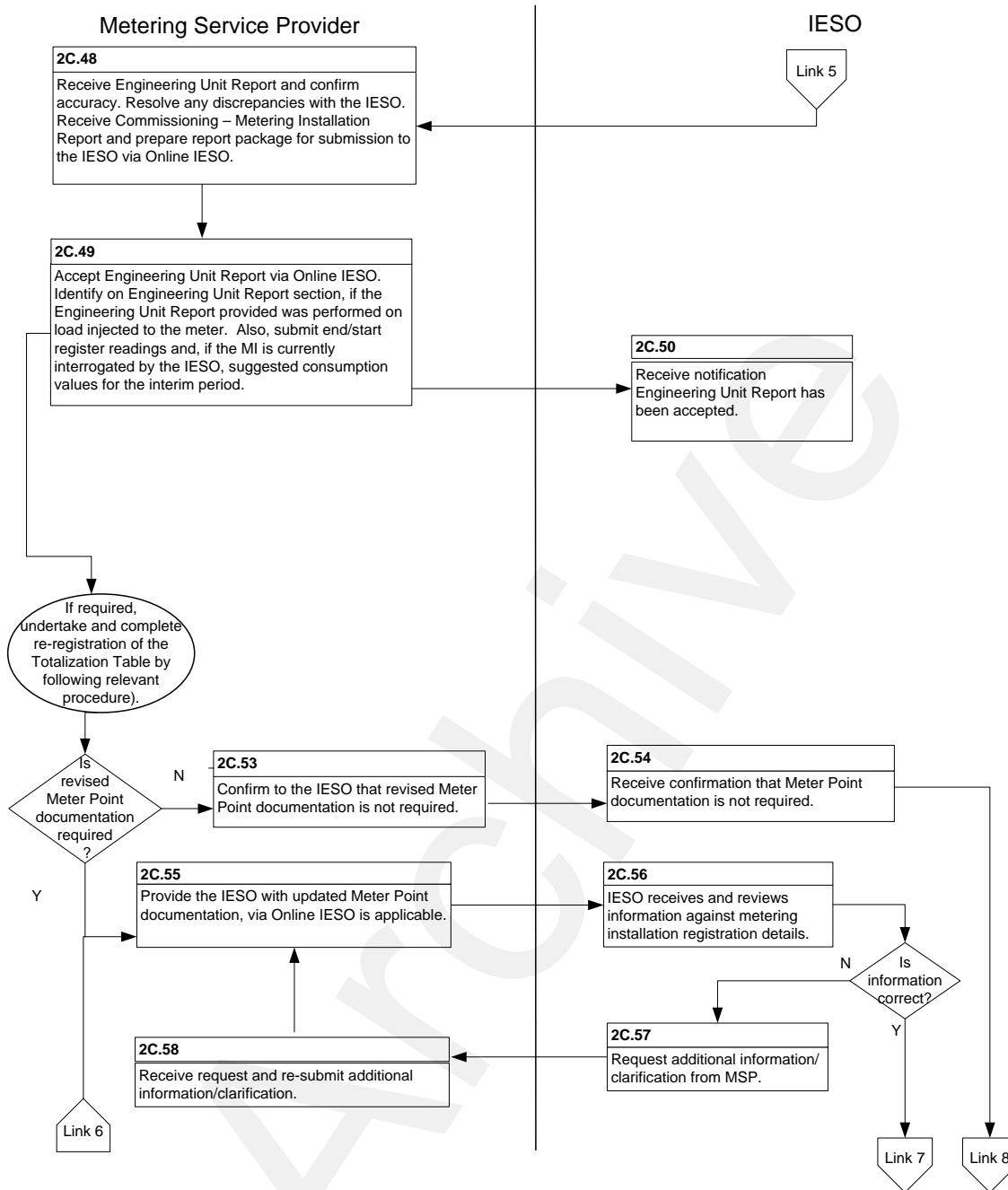


Figure 2–2: Work flow for Registration of Changes to MDAS Master File that Affect Metering Data (continued)

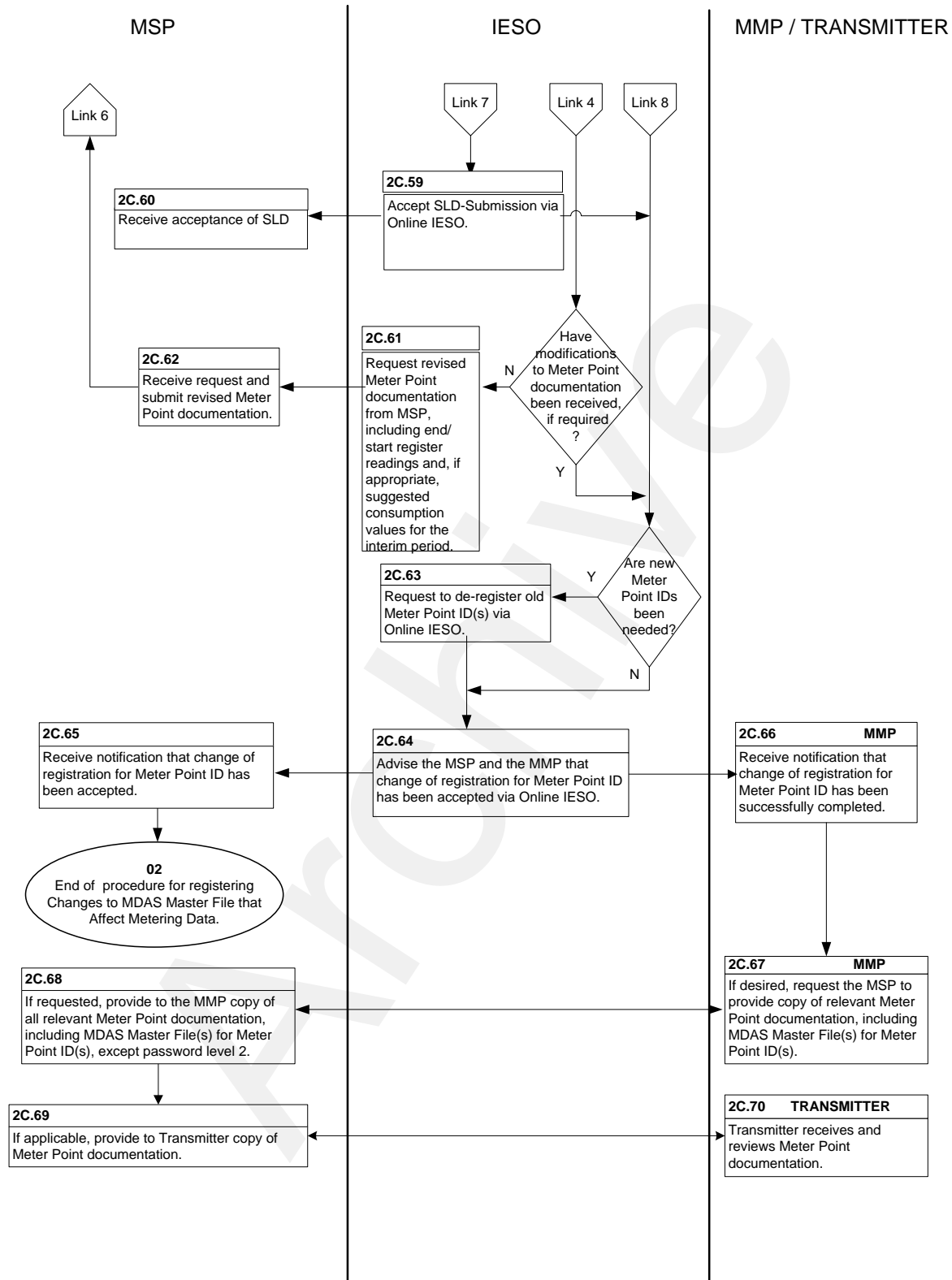


Figure 2–2: Work flow for Registration of Changes to MDAS Master File that Affect Metering Data (continued)

2.3 Change of Metering Service Provider (for a Meter Point) Not Assigned to a Delivery Point

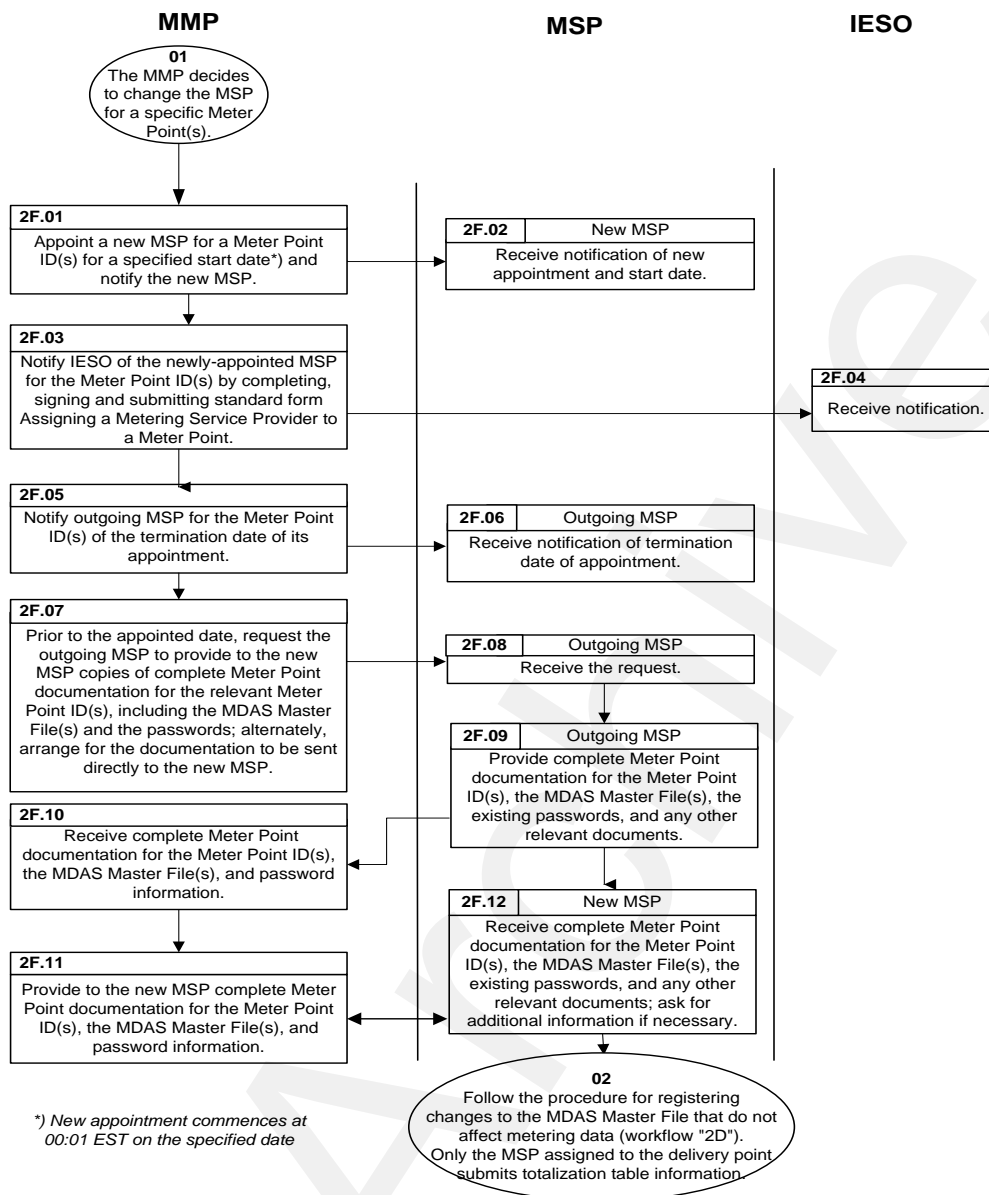


Figure 2-5: Work flow for Change of Metering Service Provider (for a Meter Point) Not Assigned to a Delivery Point

2.4 De-registration of one or more Meter Points associated with a Delivery Point

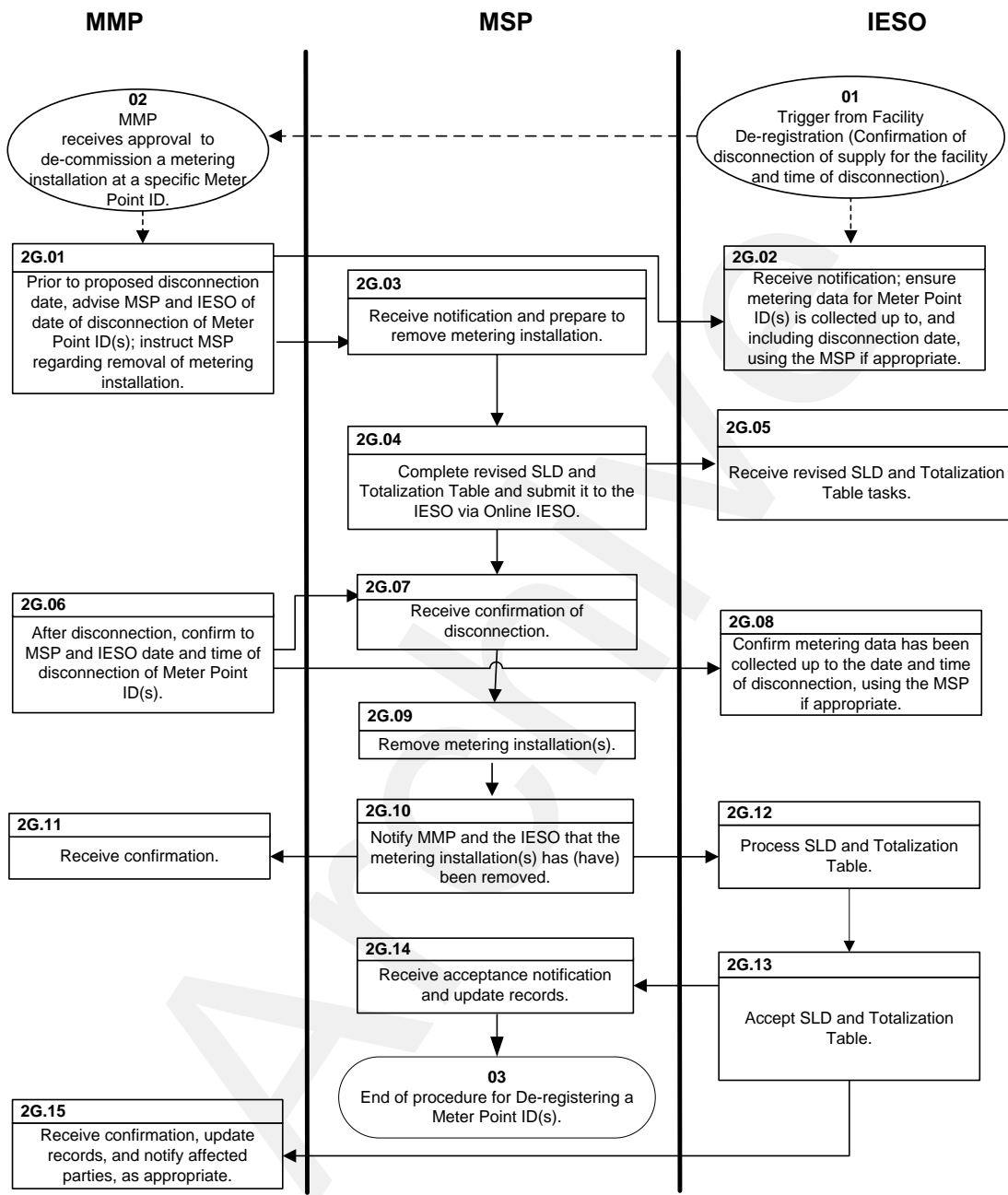


Figure 2–6: Work flow for De-registration of one or more Meter Points associated with a Delivery Point

– End of Section –

Appendix A: Forms

This appendix contains a list of forms associated with the procedure for the initial registration of *metering installations*, which are available on the *IESO* Web site (<http://www.ieso.ca>). The forms included are as follows:

Form Name	FORM No.
Totalization Table Form	IMO_FORM_1310
Application to Retain Registration under the Alternative Metering Installation Standard	IESO_FORM_1663
MIRT Update Form	IMO_FORM_1488

– End of Section –

Appendix B: Requirements for Commissioning a Metering Installation

This Appendix provides the requirements for carrying out the commissioning of a *metering installation*. Each *metering service provider* is responsible for the proper commissioning of its *metering installations* in accordance with the *market rules* and all applicable standards and policies of the *IESO*. The *metering service provider* shall have in place testing and commissioning procedures to ensure that these requirements are met.

The matter of safety is paramount and each *metering service provider* must adhere to all applicable occupational health and safety requirements. All personnel shall be equipped with the proper safety equipment and training for the job.

The following section outlines the commissioning requirements. The recorded results will form part of the Commissioning Report Package for a *metering installation*.

Commissioning Requirements

1. Visual Check

Accuracy of the *IESO* approved single line diagram (SLD) for the *facility* shall be confirmed. Using the *metering installation* wiring diagram, a visual check of all equipment which forms part of the *metering installation* shall be conducted. Checks include tracing of the secondary cabling from the *instrument transformers* to the *meters*, inspecting all connections, recording nameplate ratings (e.g. supply transformers, VT/CT ratios, accuracy, burden rating) and placement of seals.

2. Secondary Wiring

Conduct a continuity and insulation resistance test on all secondary cabling.

3. Meters

Record all required information and verify programming and configuration of the *meters*.

4. Instrument Transformers

Record all required information for the *instrument transformers*. Conduct and record ratio meter and polarity tests.

All of the above steps shall be completed prior to energizing any part of the *metering installation*.

5. Instrument Transformer Checks

Confirm the connected current transformer (CT) ratio by comparing the primary current reading obtained from an independent source. This could include reading the primary currents by means of a clip-on ammeter, operational panel ammeters or SCADA readings. If the primary current readings are within +/- 5%, the connected current transformer ratio is considered correct.

Where the voltage transformer (VT) secondary voltage is within +/- 5% of the nominal secondary voltage, the connected VT ratio is considered correct. Results outside of these limits shall be verified against an independent source.

6. Time Synchronization

Ensure that each *meter's* clock is synchronized within +/- 30 seconds of EST.

7. Cross-Phase Test

Normally the *facility* operating load is used as test current and voltage for the *metering installation*. The Cross-Phase Test confirms the correct operation of the *metering installation*. This is accomplished by using a high accuracy analyzer and recording the following information from both the analyzer and the *meters* under test:

- Per phase instantaneous magnitude and phase angle of voltage inputs
- Per phase instantaneous magnitude and phase angle of current inputs
- Per phase (if available) and total instantaneous power quantities
- Energy quantities recorded during the clocked 5 minute test interval

The kW/kVAR power and energy quantities recorded by the circuit analyzer shall be compared to the kW/kVAR power and energy quantities recorded by the *meter*. The error between the compared kW quantities cannot exceed +/- 1.0% and the error between the compared kVAR quantities cannot exceed +/- 3.0%. The *metering service provider* may accept errors outside these limits provided the results are qualified and documented.

The Cross-Phase Test shall be completed with a minimum secondary current of 0.25A per phase. If the secondary current is below 0.25A per phase, the test must be rescheduled and completed within five business days of the *metering installation* having a minimum secondary current of 0.25A per phase and no later than 90 days of the *metering installation* being energized. The commissioning procedure shall not be considered complete until the Cross-Phase Test has been performed or at the discretion of the *IESO*.

The circuit analyzer must have an accuracy class of 0.2 or better and be used within its verified operating range.

8. Communication Test

The *metering service provider* shall confirm that the communication equipment at the *metering installation* is functioning properly. This test shall include remote download of all *metering data* to verify reliable communications.

Steps 6 and 8 are to be completed by the *metering service provider* prior to the *IESO* conducting end-to-end testing and Confirmation of Engineering Unit (EUR) process as outlined in Appendix C of this *market manual*. The results of these steps are confirmed by the *IESO* as part of the end-to-end process.

Commissioning Reporting Requirements

The *metering installation* registration process is completed with the *metering service provider* submission and *IESO* acceptance of the commissioning reporting package.

The requirement to submit a commissioning reporting package will be notified to the *metering service provider* as part of the end-to-end testing and Engineering Unit (EUR) process. Notification will be issued via Online IESO. Table B-1 of this Appendix illustrates the reporting requirements for various registration activities.

Commissioning Report Types

1. New/Upgrade Metering Installation Registration

When a new *metering installation* or upgrade to an existing *metering installation* is registered, all elements of the commissioning requirement must be reported as part of the commissioning report. This requirement will be directed by the *IESO* and specified via Online *IESO*.

2. Meter Replacement

When *meter* replacement is performed for a registered metering installation, the requirement forming part of the commissioning report are elements 3 and 6 of the commissioning requirements. This requirement will be directed by the *IESO* and specified via Online *IESO*.

3. Metering Installation Maintenance (as specified by *IESO*)

Where the *metering installation* undergoes maintenance that affect the secondary wiring, instrumentation transformer replacement or other changes that impact *metering data*, the *IESO* may require the *metering service provider* to submit a commissioning report. Dependent on the function performed, the *metering service provider* is directed by the *IESO* to perform the elements of commissioning as specified via Online *IESO*.

Table B-1: Requirements for Commissioning Report

Commissioning Requirements	Initial Registration or Upgrade of a Metering Installation Registration	Meter Replacement	Installation Maintenance
1. Visual Check	√		As specified by <i>IESO</i> Metering Staff.
2. Secondary Wiring	√		
3. Meters	√	√	
4. Instrument Transformers	√		
5. Instrument Transformer Check	√		
7. Cross Phase Test	√	√	

– End of Section –

Appendix C: Conducting End-to-End Testing & Engineering Unit Report

This Appendix provides information on how the *IESO* and the *metering service* provider will conduct the end-to-end test and the signoff of relevant documentation by the *metering service providers*.

This process confirms that the *metering service provider* agrees and certifies that the *metering data* recorded in the *metering installation* and the *metering data* recorded in the *metering database* is accurate.

End-to-End Test

Once commissioning of the *metering installation* has been completed in accordance with Appendix B and notification by the *IESO* that the MDAS Master File is complete, the *metering service provider* will instruct the *IESO* to proceed with the end-to-end test.

1. The *IESO* will proceed with the end-to-end test. The test consists of:
 - a. Status Check
 - Successful communication to the *meter* and status check using MDAS. As part of the status check, the *IESO* shall confirm the meter time is within +/- 60 seconds of EST.
 - b. Time Set
 - Successful time synchronization of the *meter*.
 - c. All Read
 - Successful download of *metering data* including interval *meter* data, encoder readings and events.
2. Where the *IESO* is unable to perform any of the following:
 - a. Communicate with the *meter* and verify the *meter* time is within +/- 60 seconds EST;
 - b. Set time in the *meter*; or
 - c. Perform All Read of *meter* data,

The *IESO* shall consider that the end-to-end test has failed. The *metering service provider* will be advised accordingly and shall resolve any problems.

3. Once the end-to-end test is successfully completed, the *IESO* will inform the *metering service provider* and request the date and time for the preparation of the Engineering Unit Report.

Engineering Unit Report

Following the receipt of notification from the *metering service provider* with the date and time for the Engineering Unit Report, the *IESO* will proceed with the process of preparing the Engineering Unit Report. Where the *IESO* determines the secondary current is below 0.1A per phase for the time and date specified by the *metering service provider*, an alternate time and date will be requested. The *metering service provider* may elect to perform a secondary injection test

at approximately 2.5A per phase to complete the Engineering Unit Report for the *metering installation*. An alternate arrangement to complete the Engineering Unit Report may be acceptable at the discretion of the *IESO* where completing the requirements above are deemed not practicable.

The Engineering Unit Report consists of:

- relevant *metering installation* information;
- detailed MDAS Engineering Unit report covering the period of 60 minutes before to 60 minutes after the time and date provided by the *metering service provider*; and
- detailed *meter* MDAS Master File listing used to interrogate the *meter point(s)*.

The Engineering Unit Report is also used to indicate to the *metering service provider* if a commissioning report package is required to be submitted to complete the registration process of the *metering installation*. This requirement will be via Online IESO. The *IESO* will issue to the *metering service provider*, via Online IESO, the completed Engineering Unit Report.

Acceptance of Engineering Unit Report

Upon receipt of the Engineering Unit Report, the *metering service provider* shall verify that all information contained within the form accurately represents the *metering installation* and agree that the *metering data* recorded in a *metering installation* and the *metering data* recorded in the *metering database* is accurate. The *metering service provider* accepts the Engineering Unit Report via Online IESO.

Where Secondary Injection has been performed, the *metering service provider* shall indicate this in Part 2 “MSP Instructions” of the Engineering Unit Report.

If there are any discrepancies with information contained within the Engineering Unit Report, the *metering service provider* must resolve such issues with the *IESO* Metering Registration Hotline staff.

– End of Section –

Appendix D: Emergency Restoration Plan for Instrument Transformers

Transactions in the *IESO-administered market* are settled based on readings from registered wholesale metering. Since *energy* trading takes place on a continuous, 7 days a week, 24 hours a day, basis, data from each *registered wholesale meter* must also be continuously available.

As no electromechanical system is hundred percent reliable, *market rules* do allow for the failure of *meters* or *instrument transformers* while, at the same time, requiring timely restoration measures. *Metering installations* are generally designed such as to support interchangeable *meters* and *metering service providers* are expected to have replacements available whenever responding to trouble calls.

According to the *market rules*, in the event of an *instrument transformer* failure, the *metering service provider* has 12 weeks to replace the failed element with a Measurement Canada approved device that conforms to the of 0.3 ANSI accuracy class. Since some *instrument transformers* have procurement lead times that exceed 12 weeks, the *metering service provider* is required to have in place a plan of action that will allow such devices to be replaced within the required time limits.

Upon the failure of an *instrument transformer*, the *metering service provider* has twelve *business days* to restore dial-up access to the *metering data*. During the interim, *metering data* need not comply with the full accuracy requirements of the *market rules*. For such interim periods, the *metering service provider* is required to file in advance a plan with the *IESO* showing how this dial-up access will be provided and the correction factor to be applied to the data by the *IESO*.

The “Emergency (*instrument transformer*) Restoration Plan” (EITRP) must specify the location of spare devices as well as details on the specific actions to be taken by the *metering service providers* staff in case of IT failure, including the correction factors to be applied. Thorough implementation of this plan will ensure a smooth restoration process with no negative impact on the continuity and accuracy of *metering data* collection.

The *market rules* require an EITRP to be developed for each *metering installation* submitted for registration. This submission is an integral part of the process of registering a *metering installation*.

Guiding Principles

The *market rules* impose the following obligations on the *metering service provider*:

- Resolution of all trouble calls within two *business days*;
- Repair of all metering defects, with the exception of *instrument transformer* failure, within two *business days*;
- Restoration of dial-up access to *metering data* and application of a suitable correction factor, within twelve *business days* of any failure of an *instrument transformer*;
- Replacement of failed *instrument transformers* with Measurement Canada approved devices that conform to the ANSI 0.3 accuracy class within 12 weeks of the issuance of the related trouble call.

Strategies for Emergency Instrument Transformer Restoration

In order to comply with the relevant requirements of the *market rules*, *metering service providers* are free to develop their own strategy with regard to IT failure. Such strategies may include, but not be limited to:

1. Use Relaying Instrument Transformers

In the *IESO* marketplace, revenue metering is normally installed at a generating plant or a transformer substation. Such *facilities* are always equipped with protective relaying driven by dedicated current and voltage transformers. These devices are often installed in a position such as to measure the same power flow as the *registered wholesale meter* and may thus be connected to the revenue metering during the interim between failure of the metering *instrument transformers* and their replacement. However, since *instrument transformers* used for relay protection are usually less accurate than ANSI 0.3 class imposed on similar devices employed for revenue metering, appropriate correction factors are required.

In the process of preparing the EITRP, the *metering service provider* would identify a suitable set of relaying *instrument transformers* to be used in the situation when either a metering CT or VT fails. To calculate the correction factors to be applied, a *revenue meter* or a calibrated analyzer should be temporarily connected to replacement, protection CTs and VTs and the *energy* measured during a one-hour interval. The values thus obtained should then be compared with the values recorded by the normally-connected *registered wholesale meter* during the same period. Correction factors would then be calculated based on the ratio of the two readings.

When a metering *instrument transformer* fails, the *metering service provider* will remove the main and alternate *meters* from the *metering installation* and mount them on a portable metering panel equipped with pre-installed *meter* sockets, test blocks, and clip leads. When the failure occurs, the *metering service provider* will place this portable panel on the floor, beside the protective relaying panel, with the appropriate clip lead connections made, the current links on the test panel closed, and the current links of the relaying panel opened, thus allowing the *revenue meter* to record the power flow. The *metering service provider* will then *connect* the *meter* to the telephone line normally used for revenue metering. Finally, the *metering service provider* will place temporary barriers or appropriate warning tape thus preventing accidental contact with live connections or accidental disturbance of the connections.

In light of the above, the EITRP must:

- Identify the relaying *instrument transformers* to be used in case of failure of a metering *instrument transformer*; such identification must include the site, building, and the panel number of the relaying panel;
- Include a sketch clearly identifying the links and fuses on the relaying panel that are to be used in an *emergency* and the required connections to the temporary *meter* panel;
- Indicate the location and the specific place where the temporary metering panel, barriers, and warning tape are kept, if not in the trouble truck;
- Indicate the correction factor to be applied to the *metering data* by the *IESO*; and
- Indicate where the *metering service provider's* staff can find or requisition replacement *instrument transformers*.

2. Take Equipment Out of Service

If installation of a temporary metering panel is not feasible, a possible alternative is to take the equipment out of service. The equipment taken out of service must be physically disconnected from the transmission or *distribution system* in order to ensure that no flow through the defective *instrument transformers* is possible.

In such cases the EITRP must:

- Identify the equipment to be taken out of service and the switching devices to be operated, locked, and tagged;
- Provide reminder to the *metering service provider* to contact the appropriate Operating Authority to arrange for the equipment to be taken out of service; relevant contact information is also to be provided; and
- (optional) Specify that the *metered market participant* be notified of the equipment being taken out of service.

3. Use Dual Redundancy Feature

At some *metering installations*, the main and alternate transformers are supplied from two different sets of current transformers, while sharing the same set of voltage transformers.

The EITRP for such situations must:

- Require that the failed set of current transformers be shorted out and the connections in the *meter box* altered so that both *meters* are supplied from the remaining, healthy set of current transformers; and
- Include sketches showing how the remaining current transformers are to be re-connected when the other set fails.

Some *metering installations* may also be equipped with redundant voltage transformers. In such cases, the EITRP must provide additional documentation to show how the *metering service provider* would deal with failure of each.

4. Embedded Metered Market Participants

An agreement between an embedded *metered market participant* and a host *metered market participant* indicating that during the EITRP, the host *metered market participant* is willing to include all the embedded *metered market participant's metering data*, the EITRP submission would be acceptable to the *IESO*. A statement stating that such an agreement is in place would be the only requirement. However, the settled amount between the host and embedded *metered market participant* shall be decided between themselves with no involvement from the *IESO* what so ever. The embedded *metered market participant's delivery point* will be kept active with zero values for the duration of the EITRP while the host's *delivery point* will include the *metering data* from the embedded *metered market participant* for the duration of the EITRP. The only other requirements would involve submission of Totalization Tables for both the embedded *metered market participant* and the host.

5. Use of Correction Factor in a Temporary Metering Installation

A Correction Factor (CF) may be calculated and applied to metered kWh for the duration of the *IT* repair in three specific failure cases:

- a. Loss of one of the three CTs or VTs in a *metering installation* for a single circuit;
- b. Loss of one, two or three of the six CTs (or one VT):
 - In a *metering installation* for one of two transformers T₁ and T₂,
 - Connected to a common load bus, and
 - Sharing a single set of bus VTs.
- c. Loss of two or three of the six CTs (or VTs):
 - In a *metering installation* for one of two transformers T₁ and T₂,
 - Connected to a common load bus.

In all cases, the *metering installation* must consist of three-element *meters* which are included in the “Conforming Meter List”.

In determining the Correction Factor, the *metering service provider* shall:

- a. Analyze three continuous weeks of historical data from a period of similar load profile, immediately prior to the *IT* failure;
- b. Calculate a CF for each time interval of the selected historical time period (excluding flagged intervals);
- c. Discard all the computed CF values which are not within three standard deviations (if any), and select the highest value which is in favour of the *IESO-administered markets*;
- d. Submit a Totalization Table in which the selected CF is applied to the registered *meter* within one week of the date of *IT* failure.

Case A: Loss of One of the Three CTs or VTs in a *Metering Installation* (Figure D-1)

If there is a failure of a CT on R phase (i.e. $I_R = 0$), the corresponding Correction Factor (CF_R) will be:

$$CF_R = \frac{I_R + I_Y + I_B}{0 + I_Y + I_B} \geq \frac{3}{2}$$

Where I_R, I_Y and I_B are the respective primary R, Y and B phase currents for one interval of the selected historical time period. CF calculation is required for the failed phase only.

Given that I_R, I_Y and I_B are not directly recorded values, the CF_R shall be calculated from the $\sqrt{I^2}$ readings of the *meter*'s Channels 8, 9 and 10:

$$CF_R = \frac{Ch8 + Ch9 + Ch10}{Ch9 + Ch10}$$

Where Ch8, Ch9 and Ch10 are the respective values of Channel 8, 9 and 10 data for one interval of the selected historical time period.

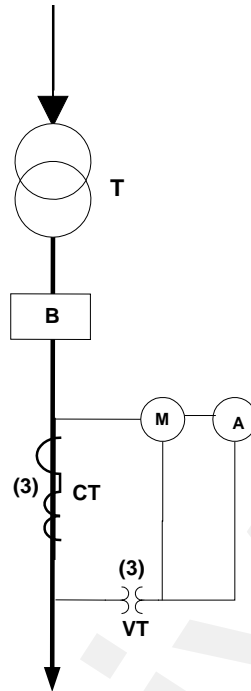


Figure D-1: Three CTs and Three VTs in a Metering Installation (Single Circuit)

Likewise, if there is a failure of a VT on R phase, the corresponding Correction Factor (CF_R) will be:

$$CF_R = \frac{V_R + V_Y + V_B}{V_Y + V_B} \geq \frac{3}{2}$$

Where V_R , V_Y and V_B are the respective voltages across the R, Y and B phases for one interval of the selected historical time period. CF calculation is required for the failed phase only.

Given that V_R , V_Y and V_B are not directly recorded values, the CF_R shall be calculated from the $\sqrt{V^2}h$ readings of the *meter's* Channels 5, 6 and 7;

$$CF_R = \frac{Ch5 + Ch6 + Ch7}{Ch6 + Ch7}$$

Where Ch5, Ch6 and Ch7 are the respective values of Channel 5, 6 and 7 data for one interval of the selected historical time period.

Case B: On the Metering Installation for One of Two Transformers T_1 and T_2 , Connected to a Common Load Bus, Sharing a Single Set of VTs (Figure D-2):

This case requires that the two transformers T_1 and T_2 be equivalent¹, individually metered, equally loaded (i.e. $I_{R1}=I_{R2}$), and connected in parallel on the load side.

¹ Equivalent transformers, per the SSLA standard MDP_STD_0005, are of same manufacturer, vintage, type, MVA rating(s), number of windings, voltages and impedances.

B2: Loss of Two or Three CTs

If there is a failure of two or three CTs in the T_1 *metering installation*, and given that T_1 and T_2 are equally-loaded, the sum of T_1 and T_2 loads can be calculated by applying a CF_{T_1} to the kWh delivered data of the T_2 *meter*.

Therefore, the corresponding Correction Factor (CF_{T_1}) will be:

$$CF_{T_1} = \frac{T_1 + T_2}{T_2} \geq 2$$

and;

$$CF_{T_1} = \frac{Ch1[T_1] + Ch1[T_2]}{Ch1[T_2]}$$

where $Ch1[T_1]$ and $Ch1[T_2]$ are the respective metered kWh delivered data on Channel 1 of T_1 and T_2 *meters* for one interval of the selected historical time period.

Case C: Loss of Two or Three of the Six CTs (or VTs) in a Metering Installation for One of Two Transformers T_1 and T_2 , Connected to a Common Load Bus (Figure D-3)

This case requires that the two transformers T_1 and T_2 be equivalent, individually-metered, equally-loaded, and connected in parallel on the load side. Also, if a tie breaker (T_1 - T_2) is present, then it will be closed and tagged for the duration of the EITRP.

If there is a failure of two or three CTs in the T_1 *metering installation*, and given that T_1 and T_2 are equally-loaded, the sum of T_1 and T_2 loads can be calculated by applying a CF_{T_1} to the kWh delivered data of the T_2 *meter*.

Therefore, the corresponding Correction Factor (CF_{T_1}) will be:

$$CF_{T_1} = \frac{T_1 + T_2}{T_2} \geq 2$$

and

$$CF_{T_1} = \frac{Ch1[T_1] + Ch1[T_2]}{Ch1[T_2]}$$

where $Ch1[T_1]$ and $Ch1[T_2]$ are the respective metered kWh delivered data on Channel 1 of T_1 and T_2 *meters* for one interval of the selected historical time period.

Likewise, if there is a failure of two or more VTs in the T_1 *metering installation*, the corresponding Correction Factor (CF_{T_1}) shall be calculated with the same equation and following the same process as shown above for the loss of two or more CTs.

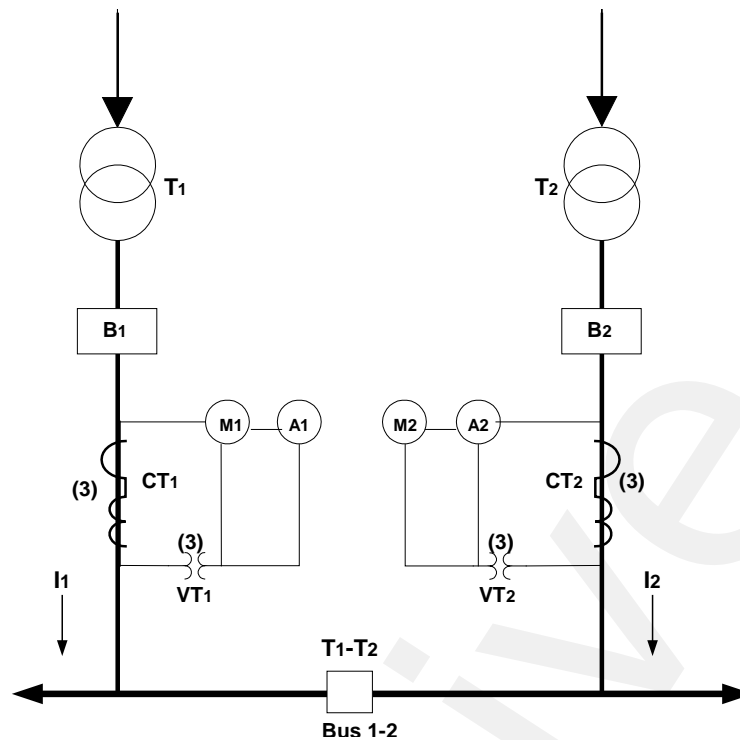


Figure D-3: Six CTs and Six VTs in a Metering Installation for One of Two Equally-Loaded, Equivalent Transformers T_1 and T_2 , Connected to a Common Load Bus

Application of the Correction Factor (CF)

In all cases, the *metering service provider* shall submit, within one week of *IT* failure, a new Totalization Table, in which the calculated CF is applied to metered kWh of the appropriate T_1 and/or T_2 *meter(s)*, for a period not to exceed twelve weeks from the date of *IT* failure.

Essential Items to be Included in the EITRP

The EITRP must include the following items:

- Correction factor to be applied by the *IESO* for each failure scenario;
- Location of spares and contact information for obtaining spares;
- Essential requirements for spares such as BIL and nominal ratio; and
- Means of providing dial-up access if the equipment is to remain in service during the interim between *instrument transformer* failure and repair.

– End of Section –

Appendix E: Applying to Retain Registration under the Alternative Metering Installation Standard

E.1 Retaining Registration under the Alternative Metering Installation Standard - Description

This procedure details the process of applying to retain registration and assessing qualification for such continued registration under the alternative metering installation standard. It also lays out the cases and conditions that must be met for the *metering installation* to be considered for continued registration.

For example, a *metered market participant* may be granted the right to retain registration under the alternative metering installation standard in the situation where two *instrument transformers* continuing under the Measurement Canada dispensation fail. Under the present *market rules*, this failure would trigger a substantial upgrade of the entire *metering installation*. However, those *metering installations* that have been granted registration retention would only need to replace the *instrument transformers* with 0.3 ANSI and would not be required to upgrade the entire installation.

E.2 Conditions

The conditions that must be satisfied for *IESO* approval to retain registration under the alternative metering installation standard are:

The *metering installation* is currently registered under the alternative metering installation standard (does not apply to a new *metering installation* that requires a signed “Declaration of Compliance of Metering Installation”).

The registration is being retained in relation to one or more of the following sections under the alternative metering installation standard in Appendix 6.2 of the *market rules*:

- i) Section 1.2: Compliance with Blondel’s Theorem;
- ii) Section 1.6: Instrument Transformers – Power Switching;
- iii) Section 1.7: Instrument Transformers – Accuracy Requirements;
- iv) Section 1.8: Instrument Transformers – Secondary Cabling;
- v) Section 1.9: Parallel Current Transformer Secondaries;
- vi) Section 1.11: Instrument Transformers – Primary Connection Point;
- vii) Section 1.12: Instrument Transformers – Primary Cable; and
- viii) Section 1.13: Instrument Transformers – Burdens.

Each application shall be subject to review and approval by the *IESO*.

The *metering installation* is one of the cases below, either A, B or C.

Approval is at the sole discretion of the *IESO*.

E.3 Cases

The *IESO* will use the following cases to assess whether continued registration of a *metering installation* will be granted. In addition, the *IESO* may consider other circumstances applicable to each of these cases where, after investigation, the *IESO* agrees that upgrading the installation is impractical or cost prohibitive, or would create an unacceptable visual impairment.

Case A. Medium Voltage (MV) Indoor Metal-enclosed Switchgear < 69 kV

All of the following conditions must be present:

- a) The *metering installation* is located in a substation supplying the *metered market participant*;
- b) The *metering installation* is inside a medium voltage switchgear enclosed in metal housing;
- c) The *instrument transformers* are shared and used for other purposes;
- d) There is insufficient physical space to upgrade of the *metering installation* to be compliant with the *market rules*;
- e) High voltage metering is either not possible due to physical space limitations or if the cost is greater than replacing the MV bus *metering installation*; and
- f) It is not practical to install pole mounted metering units (PMEs) where:
 - i) The upgrade will require four or more PMEs per medium voltage bus *metering installation*;
 - ii) The substation is located in a congested area and there is no external room for poles and PMEs;
 - iii) The egress feeders are underground and it is not practical to excavate a vault for the *metering installations*; or
 - iv) The egress feeders are overhead, but space limitations remain.

Case B. Medium Voltage (MV) Open Bus Station < 69 kV

All of the following conditions must be present:

- a) The *metering installation* is located in a substation supplying the *metered market participant*;
- b) The *metering installation* is bus mounted or bushing mounted with difficult access;
- c) The *instrument transformers* are shared and used for other purposes;
- d) There is insufficient physical space to upgrade of the *metering installation* to be compliant with the *market rules*;
- e) High voltage metering is either not possible due to physical space limitations or if the cost is greater than replacing the MV bus *metering installation*; and
- f) It is not practical to install PMEs where:
 - i) The upgrade will require four or more PMEs per open bus medium voltage *metering installation*;

- ii) The substation is located in a congested area and there is no external room for poles and PMEs;
- iii) The egress feeders are underground and it is not practical to excavate a vault for the *metering installations*; or
- iv) The egress feeders are overhead, but space limitations remain.

Case C. High Voltage (HV) Open Bus Station > 69 kV

All of the following conditions must be present:

- a) The *metering installation* is located in a substation supplying the *metered market participant*;
- b) The *metering installation* is bus mounted with difficult access;
- c) The *instrument transformers* are shared and used for other purposes;
- d) There is insufficient physical space to upgrade of the *metering installation* to be compliant with the *market rules*;
- e) Medium voltage metering is either not possible due to physical space limitations or if the cost is greater than replacing the HV bus *metering installation*; and
- f) It is not practical to install PMEs where:
 - i) The upgrade will require four or more PMEs per open bus high voltage *metering installation*;
 - ii) The substation is located in a congested area and there is no external room for poles and PMEs;
 - iii) The egress feeders are underground and it is not practical to excavate a vault for the *metering installations*; or
 - iv) The egress feeders are overhead, but space limitations remain.

E.4 The Application Process

1. After reviewing the conditions and cases described above, the *metered market participant* shall file a completed IESO-FORM-1663: “Application to Retain Registration under the Alternative Metering Installation Standard” with supporting information. The application must contain sufficient information to enable the *IESO* to make a decision.

Any cost estimate provided by the applicant as part of the justification must be at least Class C (Indicative). Refer to Table E-1 for a Class C (Indicative) cost summary.

Table E-1: Class C (Indicative) Cost Estimate Summary

Project Details	Purpose	Methodology	Precision	Preparation Effort
Low (project plan)	Seeking preliminary project approval	Measured, priced, parameter quantities, where possible	Low (-15 to + 25% variance)	Low

Upon review of the submitted information, the *IESO* may:

- i) Determine that the *metering installations* do not meet the conditions specified in this *market manual* and reject the application;
- ii) Request additional information from the *metered market participant*; or
- iii) Decide the application has merit.

Where the *IESO* decides the application has merit, the *IESO* shall conduct an on-site assessment of each *metering installation* forming part of the application. The *metered market participant* shall arrange access to the site in a timely manner.

The *IESO* may hold additional meetings with the applicant to obtain clarification.

The *IESO* shall provide a written report to the *metered market participant* detailing its decision and reasons for the decision. This report is to be provided within three weeks of the on-site assessment or within three weeks of any additional meetings concerning the application.

Applicants must agree that their application information will be posted in its entirety (except for Part 4 of IESO-FORM-1663) on the *IESO* Web site. The applicant shall obtain consent for the disclosure of any and all *confidential information* from third parties that forms part of the application. The *IESO*'s decisions and reasons will also be posted.

The *IESO* shall report all applications received and decided to the Revenue Metering Sub-Committee.

The *metered market participant* shall pay the cost of processing the application and the cost of the on-site assessment:

- i) The cost of an application is \$1,000.00 per *facility*, to be submitted at the time of application.
- ii) The cost for the on-site assessment is the greater of \$1,000.00 per day or the actual cost to perform the on-site assessment. This cost would apply to all the days worked by the *IESO* or part thereof. This cost shall be paid by the *metered market participant* upon invoice.

E.5 Example of an Assessment to Retain Registration Under the Alternative Metering Installation Standard

1. Figure E–1 illustrates a typical example of a MV Bus *metering installation* registered under the alternative metering installation standard. This *metering installation* reflects Cases A and B described in Section E.4². In this example, the following sections of Appendix 6.2 of the *market rules* apply to this *metering installation*:

- Section 1.2: Compliance with Blondel’s Theorem
- Section 1.6: Instrument Transformers – Power Switching
- Section 1.7: Instrument Transformers – Accuracy Requirements
- Section 1.8: Instrument Transformers – Secondary Cabling
- Section 1.9: Parallel Current Transformer Secondaries
- Section 1.13: Instrument Transformers – Burdens

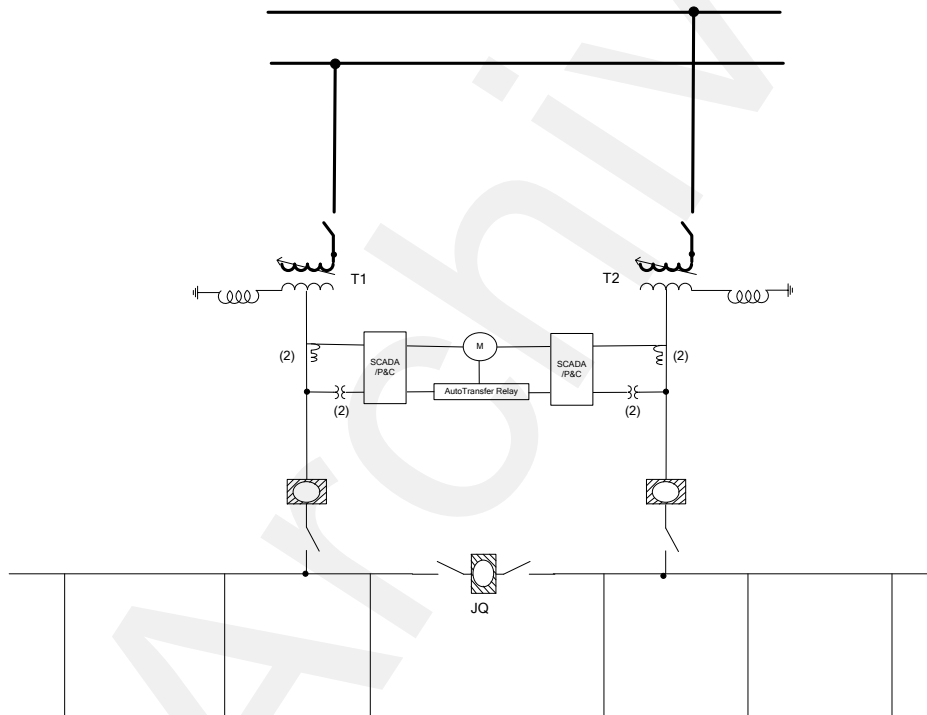


Figure E–1: MV Bus Metering Installation Registered under the Alternative Metering Installation Standard

² This example also applies to Case C. The Bus *metering installation* illustrated in Figure E–1 would be located on the HV side of the T1/T2 power transformers.

2. When the substantial upgrade clause is triggered, the *metering installation* must be upgraded to meet full compliance of Section 4.1 of Chapter 6 of the *market rules*. The *metered market participant* has three options when upgrading the *metering installation*.

Option 1 – HV Metering Installation:

The existing MV Bus *metering installation* is replaced with a HV *metering installation* that is compliant with Section 4.1 of Chapter 6 of the *market rules* as illustrated in Figure E–2.

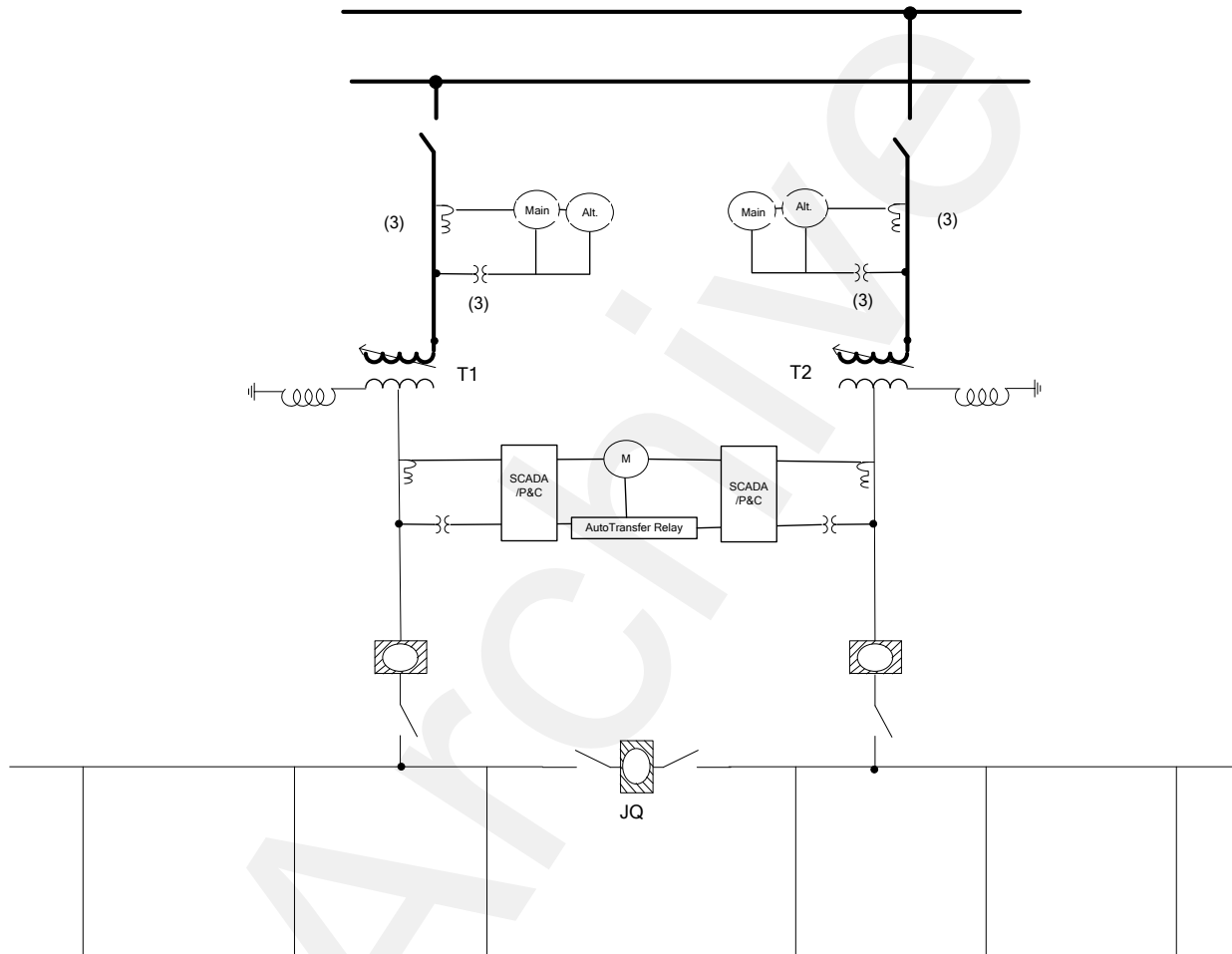


Figure E–2: HV Metering Installation Registered under Section 4.1 of Chapter 6 of the Market Rules

Option 2 – MV Bus Metering Installation:

The existing MV Bus *metering installation* is replaced with a MV Bus *metering installation* that is compliant with Section 4.1 of Chapter 6 of the *market rules* as illustrated in Figure E–3.

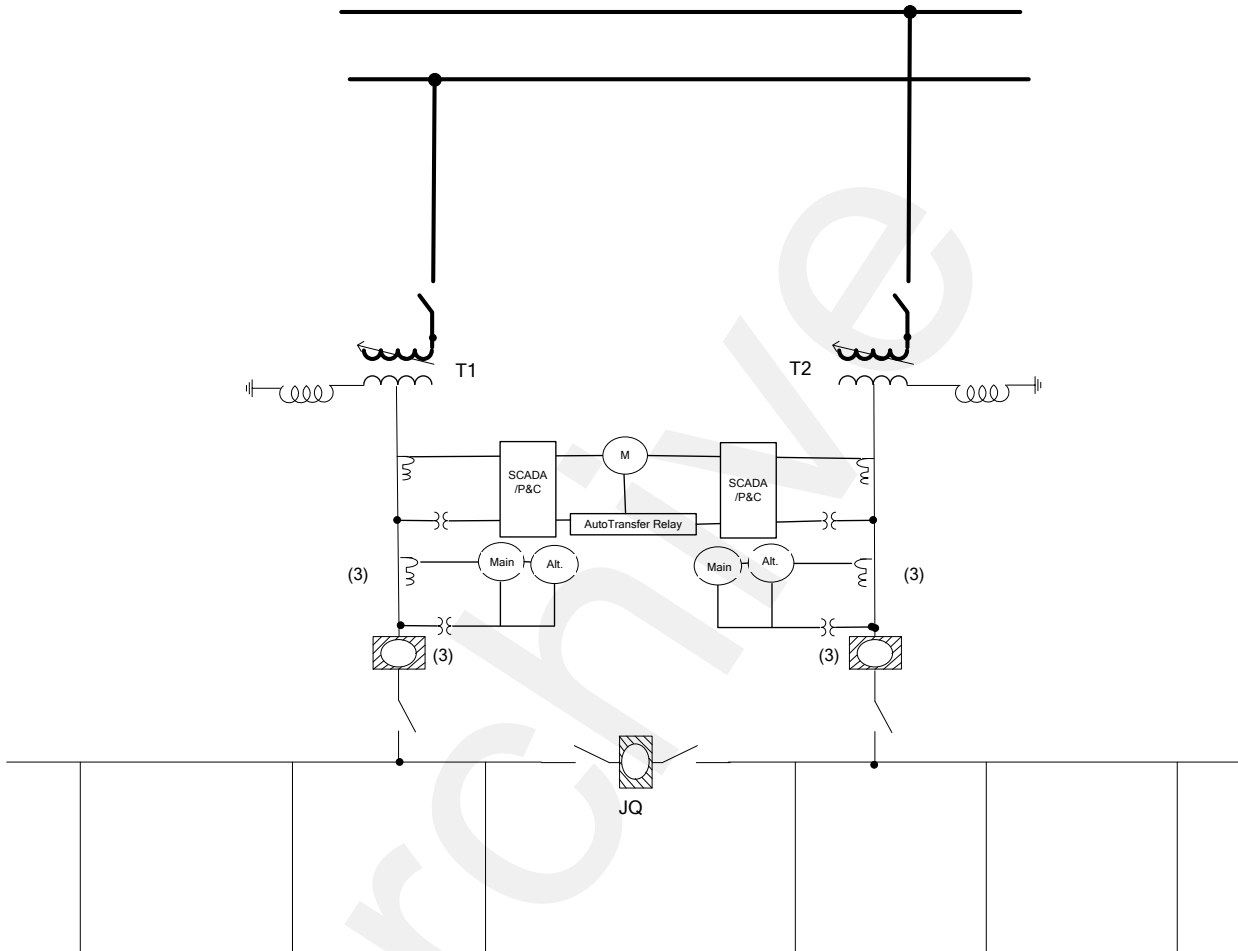


Figure E–3: MV Bus Metering Installation Registered under Section 4.1 of Chapter 6 of the Market Rules

Option 3 – MV Feeder Metering Installation:

The existing MV Bus *metering installation* is replaced with one or more MV feeder *metering installation(s)* that is compliant with Section 4.1 of Chapter 6 of the *market rules* as illustrated in Figure E-4. This is a viable option only when there are three or fewer feeders per bus *metering installation*.

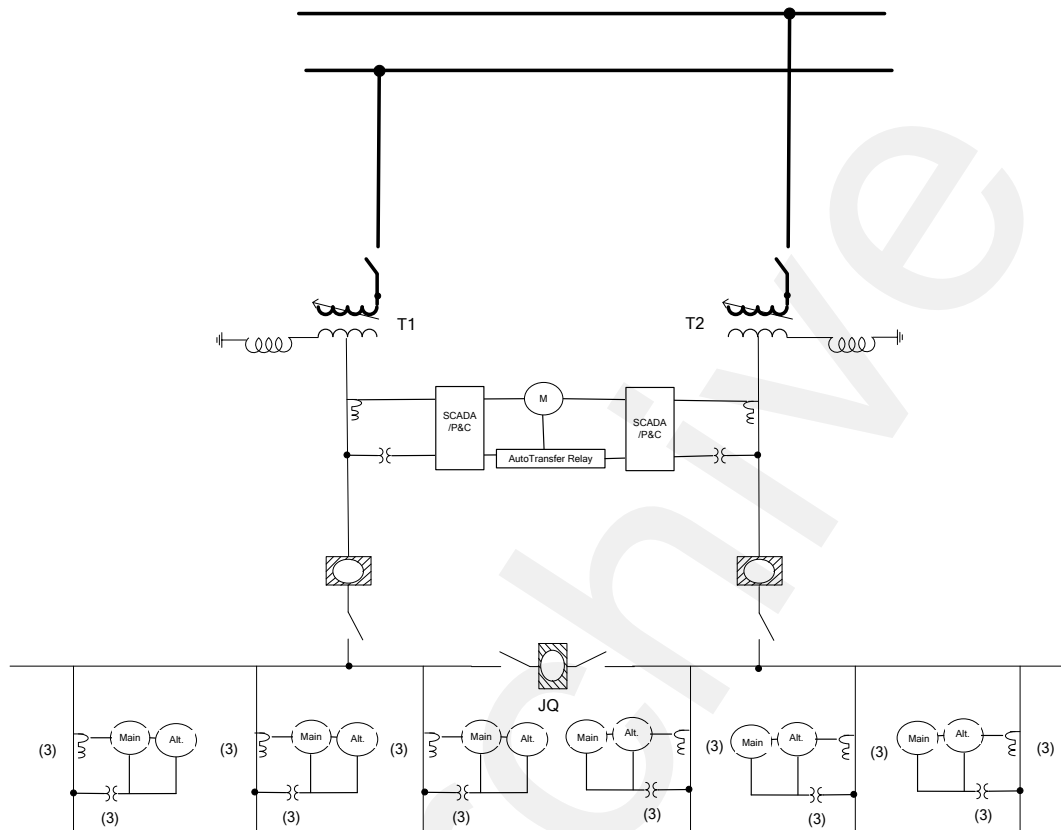


Figure E-4: MV Feeder Metering Installations Registered under Section 4.1 of Chapter 6 of the Market Rules

3. Where the *metered market participant* can demonstrate that Options 1, 2 and 3 require rebuilding of major components of the *facility* or power system and is, therefore, impractical, they may apply to retain registration under Section 4.4.8 of Chapter 6 of the *market rules*.
4. When the application to retain registration under the alternative metering installation standard is accepted by the *IESO*, the *metered market participant* is permitted to retain registration of the following components of the *metering installation* under Appendix 6.2 of the *market rules*:
 - Section 1.2: Compliance with Blondel’s Theorem;
 - Section 1.8: Instrument Transformers – Secondary Cabling; and

- Section 1.13: Instrument Transformers – Burdens.

All other sections under Appendix 6.2 of the *market rules* no longer apply to this *metering installation* and the *metering installation* must be in full compliance with Section 4.1 of Chapter 6 of the *market rules*. Figure E–5 illustrates the final configuration of the *metering installation* that has been granted the right to retain registration under the alternative metering installation standard.

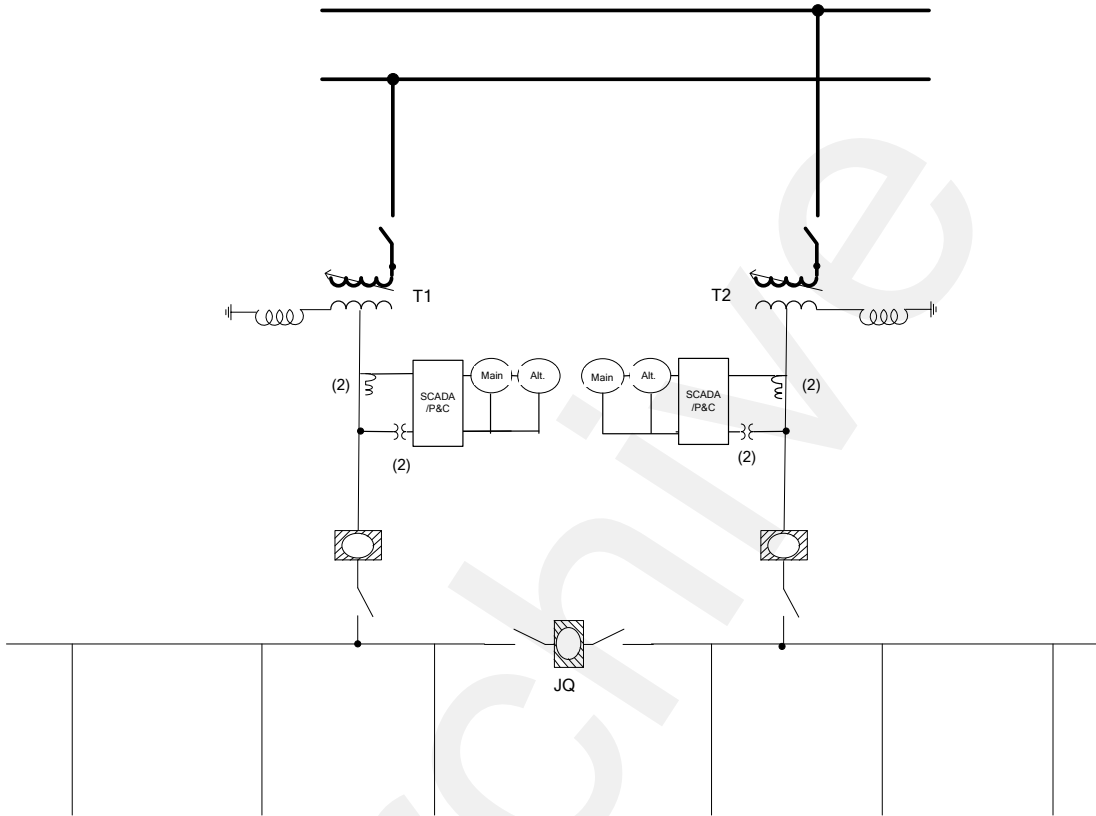


Figure E–5: MV Bus Metering Installation Registered under Section 4.4 of Chapter 6 of the Market Rules

– End of Section –

References

Document ID	Document Title
N/A	Electricity and Gas Inspection Act (Canada)
MDP_RUL_0002	Market Rules
MDP_STD_0004	Wholesale Revenue Metering Standard—Hardware
MDP_PRO_0014	Market Manual 1: Market Entry, Maintenance and Exit, Part 1.1: Participant Authorization, Maintenance and Exit
MDP_PRO_0016	Market Manual 1: Market Entry, Maintenance and Exit, Part 1.2: Facility Registration, Maintenance, and De-registration
MDP_PRO_0017	Market Manual 2: Market Administration, Part 2.1: Dispute Resolution
MDP_PRO_0007	Market Manual 3: Metering, Part 3.1: Metering Service Provider (MSP) Registration, Revocation, and De-registration
MDP_PRO_0010	Market Manual 3: Metering, Part 3.4: Measurement Error Correction
MDP_PRO_0011	Market Manual 3: Metering, Part 3.5: Site-Specific Loss Adjustments
MDP_PRO_0012	Market Manual 3: Metering, Part 3.6: Conceptual Drawing Review
IMP_PRO_0047	Market Manual 3: Metering, Part 3.7: Totalization Table Registration
IMP_PRO_0057	Market Manual 3: Metering, Part 3.8: Creating and Maintaining Delivery Point Relationships
N/A	MIRT online help
MDP_MAN_0003	Market Manual 3: Metering Overview
	Alternate Metering Standard

– End of Document –